

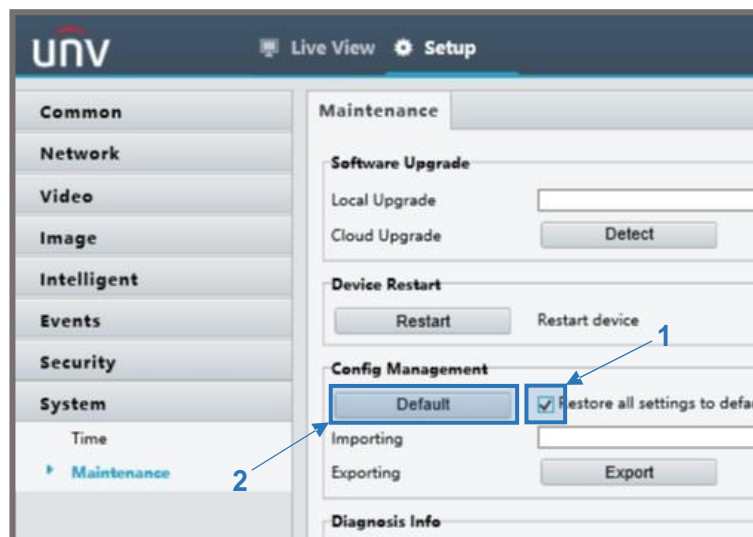


ADDING UNIVIEW IP CAMERA TO CLEAR NVR

Adding an Uniview Camera

Uniview Camera Setup

1. Connect your Uniview camera and login to the camera's administrator account via the web service.
2. Go to **Setup->System->Maintenance-> Check in the box next to Default** and then select **"Default"**. (Note: If the camera is brand new this step is not necessary.)





3. Log back into the camera and go to **Setup->Security->Network Security->RTSP Authentication-> Change the authentication option to "None" and select "Save"**.



Adding Camera to a CLEAR NVR

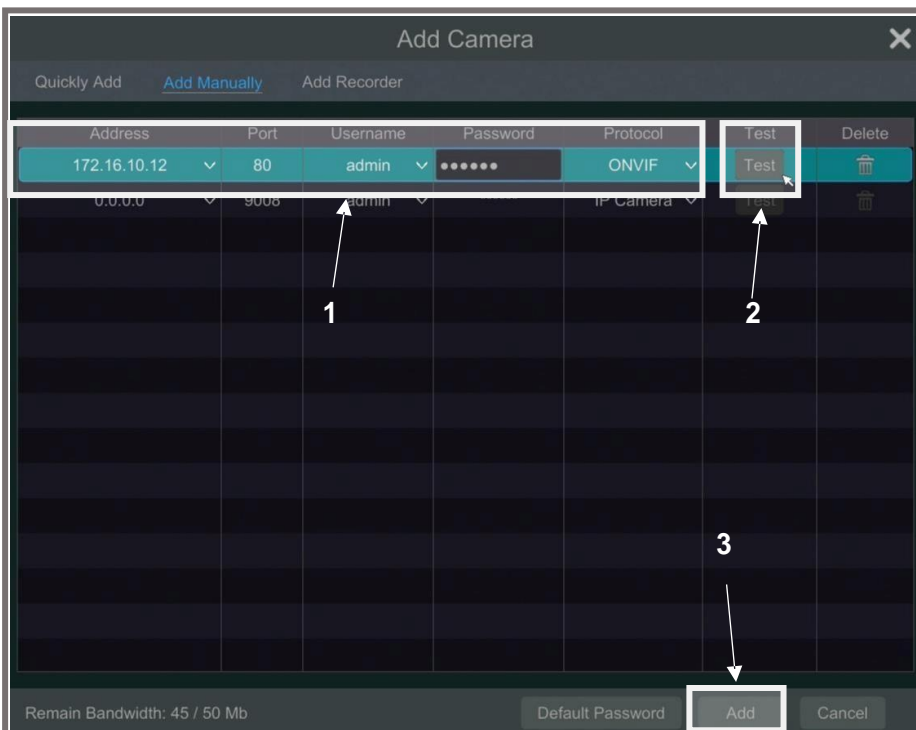
1. Connect your CLEAR NVR to your display monitor and login to your administrator account.

2. Select the "Menu option"  and then select "Settings".  Settings

3. Navigate to the Camera settings and select "Add Camera".



4. Fill in the available fields with your cameras corresponding information (reference table below). Once complete select "Test" to verify proper connection to the camera and then select "Add".



Address	Whatever is DHCP'd or assigned to the camera
Port	80
Username	admin
Password	123456
Protocol	ONVIF

Note: If working with a CLEAR NVR with built in POE the above steps are not required unless the cameras password has been changed

Motion Recording Setup

When working with IP cameras the motion detection is triggered by the camera which then sends the signal to the NVR. To setup motion recording utilizing an Uniview IP camera you will first need to enable and configure motion detection within the camera itself. Below is a brief walkthrough for enabling and configuring motion within your CLEAR camera. **Once complete please review our CLEAR Record Upon Motion Quick Guide for scheduling the recording on the NVR.**

1. Login to your Uniview Camera.
2. Go to **Setup->Events->Common Alarm->Motion Detection.**
3. Select the plus sign to add a detection area and adjust your motion settings as needed. Once complete select **"Save"**. **(Reference image below)**

Select the plus sign to add a detection area. Once added, draw a box within the pictured FoV determining where motion will be

Here you can adjust how sensitive you wish your camera to be for detecting

Here you can schedule when you'd like your camera to pick up motion. By default all days should be scheduled to do so. If they are not, select edit and enable the needed days. Once completed select **Enable Plan**.

ONCE ALL ABOVE SECTIONS ARE SET AS NEEDED BE SURE TO SELECT SAVE

UNV Live View Setup

Common Network Video Image Intelligent Events Common Alarm Smart Alarm Security System

Motion Detection Tampering Alarm

Detection Mode Area

Detection Area + Area

Sensitivity Low High

Object Size Small Large

History Short Long

Alarm Parameters

Suppress Alarm(s) 25

Clear Alarm(s) 5

Alarm Triggering Mode

Upload to FTP Trigger E-mail

Enable Plan

Arm Disarm Edit

0 1 2 3 4 5 6 7 8 9 10 11 12 13 14 15 16 17 18 19 20 21 22 23 24

Mon

Tue

Wed

Thu

Fri

Sat

Sun

Save