

Tags:

Automatic Number Plate  
Recognition (ANPR) ✕

License Plate  
Recognition (LPR) ✕

✕

✕



## Seamlessly Integrating ANPR

It can be challenging to accurately capture, read and analyze a license plate, particularly in high speed applications. The integration of ARH's ANRP solution to Pelco™ by Schneider Electric™ VideoXpert™ video management system reduces the complexity.

The integration of these two technologies is made possible via the VideoXpert Ops Center Plugin. The FreewayCAM camera, available through ARH, allows for real-time motion detection while the VideoXpert platform makes it possible to display and manage the information through a single user interface.

### At a Glance

- View live video from ARH FreewayCAM video
- ANPR data displayed and managed via VideoXpert Ops Center
- ARH event information displayed side-by-side live or recorded video
- Real-time data display of information

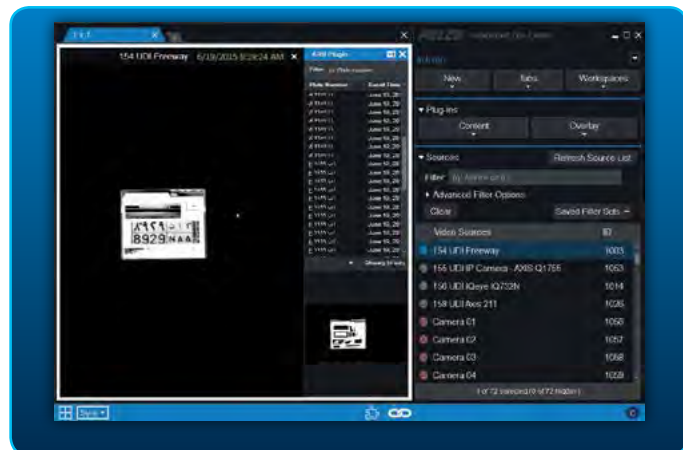
Learn more at [pelco.com/videoxpert](https://pelco.com/videoxpert)



by Schneider Electric

**Choose with Confidence.**

## License Plate Data at High Speeds



Designed by ARH for high-speed traffic applications, the FreewayCAM ANPR camera enables image capture for real-time motion detection at speeds up to 250 km/h. When a vehicle crosses the FreewayCAM's view of sight, it triggers a motion event on the camera prompting the camera to transmit related ANPR data to VideoXpert. Data is then checked against pre-defined lists to identify matches, including country-specific ANPR. This information is retrieved in VideoXpert and displayed along side video, and ANPR data for a seamless user experience.

### Features:

- Seamless integration with FreewayCAM for real-time LPR
- Country specific ANPR, leveraging ARH ANPR Engine
- Quick access to LPR data ( LP #, timestamp & snapshot/ screen capture view)
- ARH FreewayCAM camera required for full integration functionality

## Event Display and Data Management



Event data received by the ARH system is displayed in the VX Ops Center. Critical event detail such as plate number, timestamp and snapshot overview are displayed side-by-side with live or recorded video from within the Ops Center. The integration of data makes it possible for real-time display of license plate information and real time alerts.

### Features:

- Data displayed as an overlay within the Ops Center provides ease of access to data from a single UI
- Real-time data display of information as vehicle crosses camera's line of sight, including license plate, timestamp and snapshot
- Easy search of Plate Number within Event List
- Sort data by Event Timestamp to quickly retrieve all license plate reads during a specific timeframe
- Snapshot of license plate for 1 click access

**Model:** OCCPLUGARHOL ARH Ops Center Overlay Plugin



### About ARH Inc.

ARH Inc. develops, manufactures and sells intelligent software and devices that process images within the context of security and traffic control. We are on the market since 1991, committed to innovation, quality and reliability. All elements our business model converge to build strong partnerships with the purpose of gaining customer satisfaction. We value most the idea of supporting our partners in order for them to develop a successful business.



Contact the sales representative in your area today, or visit [pelco.com/videoexpert](http://pelco.com/videoexpert) to learn more.

*VideoXpert users must meet system and eligibility requirements to utilize the driver and/or plug-in. FreewayCAM hardware is required.*