

## EH8100 Series Enclosure

### SPECIALTY, OUTDOOR, PRESSURIZED

#### Product Features

- 4- or 6-Inch Diameter
- For Use with Cameras with Fixed Focal Length or Motorized Lenses
- Indoor/Outdoor Applications
- For Use with Fixed Mount or Pan/Tilt
- Meets NEMA Type 6 and IP67 Standards
- Thermostat Controlled Heater(s), Standard Feature
- Easy Access for Service and Installation
- Legacy®-Compatible Version Available (EH8106L Only)



EH8106 ENCLOSURE



ENCLOSURE WITH SUN SHROUD

Pelco's **EH8100 Series** sealed and pressurized outdoor enclosure is designed to protect camera and lens components in adverse environmental conditions. The pressurized enclosure increases the camera reliability and reduces the cost of maintenance.

The **EH8100 Series** enclosure is easily sealed and pressurized in the field with dry nitrogen to prevent impurities from contaminating camera and lens components. A pressure relief valve prevents over-charging of the enclosure.

The **EH8100 Series** has lens preset capabilities and is designed for cameras with fixed focal length or motorized zoom lenses.

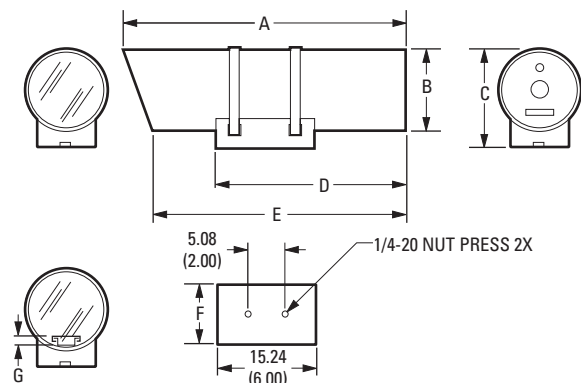
Constructed of aluminum, the **EH8100 Series** features an adjustable mounting cradle, sled and track assembly for camera mounting, and a T-handle on the rear plate for easy access to the camera and lens. Power, video, and lens control cables are routed through an MS-type connector on the rear of the enclosure.

An optional sun shroud is available that helps protect the enclosure from direct sunlight and reduces the internal temperature by approximately 6° to 10°C (10° to 15°F).

The **EH8100 Series** can be used in fixed mount applications or with a medium duty pan/tilt, such as our PT570 Series.



NOTE: VALUES IN PARENTHESES ARE INCHES; ALL OTHERS ARE CENTIMETERS.



	A	B	C	D	E	F	G
EH8104	45.72 (18.00)	11.43 (4.50)	13.97 (5.50)	31.57 (12.50)	43.18 (17.00)	7.62 (3.00)	2.33 (0.92)
EH8106	55.88 (22.00)	16.51 (6.50)	17.78 (7.00)	33.02 (13.00)	50.80 (20.00)	17.78 (7.00)	2.23 (0.88)



by Schneider Electric

International Standards  
Organization Registered Firm;  
ISO 9001 Quality System



C410 / REVISED 5-17-11

# TECHNICAL SPECIFICATIONS

## MODELS

EH8104-1	Pressurized enclosure with two 120 VAC heaters; 10.16 cm (4-inch) inside diameter
EH8104-3	Pressurized enclosure with two 230 VAC heaters; 10.16 cm (4-inch) inside diameter
EH8106-1*	Pressurized enclosure with two 120 VAC heaters; 15.24 cm (6-inch) inside diameter
EH8106-3*	Pressurized enclosure with two 230 VAC heaters; 15.24 cm (6-inch) inside diameter

## ELECTRICAL

Input Voltage	
EH8104-1, EH8106-1	120 VAC
EH8104-3, EH8106-3	230 VAC
Power Consumption	
EH8104 Series	40 W
EH8106 Series	80 W
Heater	
EH8104-1	2 at 20 W each, 120 VAC
EH8104-3	2 at 20 W each, 230 VAC
EH8106-1	2 at 40 W each, 120 VAC
EH8106-3	2 at 40 W each, 230 VAC
	Heater(s) are thermostatically controlled to activate at 4°C (40°F) and turn off at 15°C (60°F)
Connector	16-pin receptacle with jam nut
Mating Connector	MS-type connector (supplied)
Maximum Cable Distances	
120 VAC	
16 AWG (1.5 mm <sup>2</sup> )	EH8104 Series 1,365 m (4,477 ft) EH8106 Series 682 m (2,238 ft)
18 AWG (1.0 mm <sup>2</sup> )	860 m (2,821 ft) 430 m (1,410 ft)
20 AWG (0.5 mm <sup>2</sup> )	540 m (1,773 ft) 270 m (886 ft)
230 VAC	
16 AWG (1.5 mm <sup>2</sup> )	15,014 m (16,449 ft) 2,507 m (8,224 ft)
18 AWG (1.0 mm <sup>2</sup> )	3,159 m (10,364 ft) 1,579 m (5,182 ft)
20 AWG (0.5 mm <sup>2</sup> )	1,985 m (6,514 ft) 993 m (3,257 ft)

## MECHANICAL

Front Window	
EH8104 Series	4-inch diameter tempered glass, 0.225-inch thick
EH8106 Series	6-inch diameter tempered glass, 0.225-inch thick
Camera Mounting	Multiple mounting holes on camera sled allow for linear adjustment
Maximum Camera and Lens Size	Accepts camera and lens combinations <sup>‡</sup> (including BNC connector) up to:
EH8104	35.56 x 6.35 x 6.35 cm (14.00" L x 2.50" W x 2.50" H) or 35.56 x 7.62 cm (14.00" L x 3.00" diameter)
EH8106	45.72 x 10.16 x 10.16 cm (18.00" L x 4.00" W x 4.00" H) or 45.72 x 12.7 cm (18.00" L x 5.00" diameter)
Enclosure Mounting	Adjustable cradle secured with type 316 stainless steel bands
Purge Fitting	Standard Schrader valve to allow enclosure to be filled with dry nitrogen
Purge Relief Fitting	Prevents over pressurization of enclosure

## GENERAL

Construction	Aluminum 6061 T6
Finish	Gray polyester powder coat
Weight	Unit Shipping
EH8104 Series	3.62 kg (8 lb) 4.98 kg (11 lb)
EH8106 Series	6.79 kg (15 lb) 8.15 kg (18 lb)

## ENVIRONMENTAL

Ambient Operating Temperature	-40° to 50°C (-40° to 122°F) with heater(s)
Vibration	5 to 60 Hz with 0.082-inch total travel (15 g at 60 Hz). From 60 to 1,000 Hz, 5 g RMS with random vibration
Altitude	Sea level to equivalent of 3,048 m (10,000 ft)
Acoustic Noise	Operates in 150 dB acoustic noise environments
Humidity	Up to 100% relative humidity; standard Schrader and pressure relief valves provide positive internal pressure with dry nitrogen

## CERTIFICATIONS/RATINGS

- CE
- UL/cUL Listed
- Meets NEMA Type 6 and IP67 standards

## OPTIONAL ACCESSORIES

<b>Sun Shroud</b>	SS8004	Sun shroud for EH8104 Series enclosure
	SS8006	Sun shroud for EH8106 Series enclosure
<b>Other</b>	EH8000RKIT	Dry nitrogen recharging kit (nonrefillable)
	PSKIT8100	Pressure sensor kit; provides a contact closure that can be wired to trigger an alarm when internal pressure drops to 2 psi

## RECOMMENDED MOUNTS

<b>EH8104 Series</b>	
EM1109, EM2000, EM2200	Medium duty mount for horizontal/vertical pipe or pole; maximum load is 18.1 kg (40 lb)
EM22	Medium duty wall mount; maximum load is 18.1 kg (40 lb)
MM22	Medium duty ceiling/pedestal mount; maximum load is 18.1 kg (40 lb)
<b>EH8106 Series</b>	
PM2000, PM2010 <sup>‡</sup>	Pedestal/ceiling mount; maximum load is 56.62 kg (125 lb)
WM2000 <sup>‡</sup>	Wall mount; maximum load is 34 kg (75 lb); increased to 68 kg (150 lb) when used with ST1 strut
WM3026	Heavy duty wall mount with adjustable head; maximum load is 136 kg (300 lb)
<b>Adapters</b>	
AH2000	Adjustable head
STI	Support strut

## RECOMMENDED PAN/TILTS

PT570 Series	Medium duty pan/tilt; maximum load is 18.14 kg (40 lb)
--------------	--

\*For applications requiring an integrated positioning system, refer to our Pressurized Legacy Series.

<sup>‡</sup>Assumes lens is fully extended.

<sup>‡</sup>Use with AH2000 adjustable head.

### Pelco by Schneider Electric

3500 Pelco Way, Clovis, California 93612-5699 United States

**USA & Canada** Tel (800) 289-9100 Fax (800) 289-9150

**International** Tel +1 (559) 292-1981 Fax +1 (559) 348-1120

**www.pelco.com**

Pelco, the Pelco logo, and other trademarks associated with Pelco products referred to in this publication are trademarks of Pelco, Inc. or its affiliates. All other product names and services are the property of their respective companies. Product specifications and availability are subject to change without notice.

©Copyright 2011, Pelco, Inc. All rights reserved.