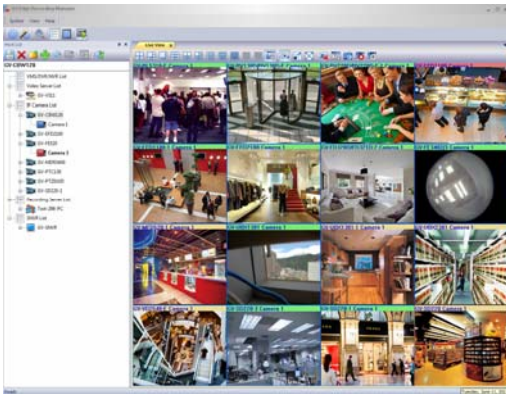
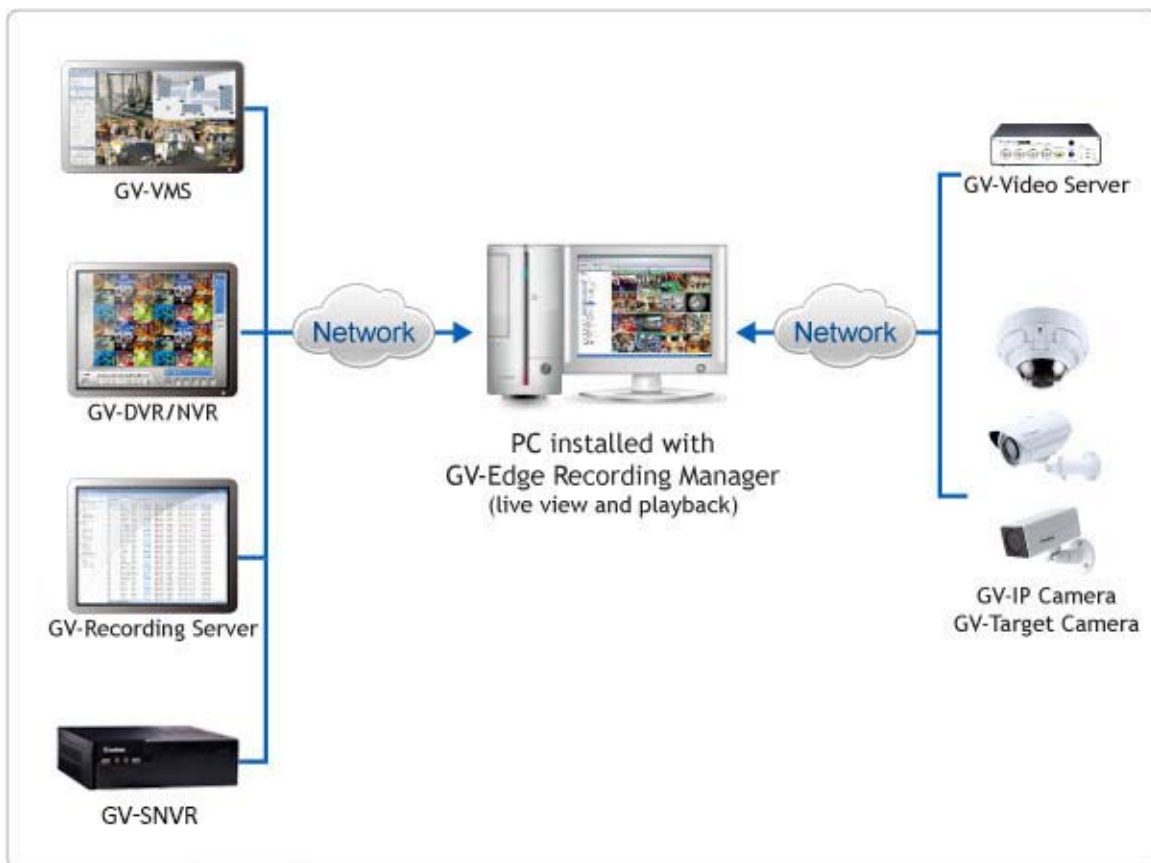


GV-Edge Recording Manager (Windows Version)



Introduction

GV-Edge Recording Manager is a tool designed for recording management of remote GV-IP Cameras and GV-Target Cameras. It is an integrated interface from which you can assess live view, assign recording to NAS servers, enable recording, play back videos and view storage space without visiting each host's Web interface. Any connection with hosts can be disabled without affecting or stopping the hosts' normal functioning. GV-Edge Recording Manager also supports live view display and video playback of hosts connected to GV-Video Server, GV-VMS, GV-System (GV-DVR / NVR), GV-Recording Server and GV-SNVR.



Assigning Recording to NAS Servers

Through GV-Edge Recording Manager, you can have GV-IP Cameras or GV-Target Cameras record to NAS servers and also view the storage information such as the occupied space and remaining space. GV-NAS Systems are also available at your choice.



Features

- Display up to 32 channels for free, up to 64 channels using a GV-USB dongle
- On-demand display for dual channels
- Fisheye dewarping
- PIP / PAP view
- Manual snapshot
- Enable and disable host recording for GV-IP Devices
- Host storage assignment to NAS servers for compatible GV-IP Devices
- Remote playback
- Batch IP address assignment for GV-IP Devices
- PTZ control
- Two-way audio
- Import and export of system configuration
- View storage information (free and occupied space) for GV-IP Devices

Minimum System Requirements

| | | |
|--------------|---------------------------------|--|
| OS | 32-bit | Windows 7 / 8 / 8.1 / 10 / Server 2008 |
| | 64-bit | Windows 7 / 8 / 8.1 / 10 / Server 2008 R2 / Server 2012 R2 |
| CPU | 32 channels (with Dual Streams) | Core i3-4130, 3.4 GHz |
| | 64 channels (with Dual Streams) | Core i5-4670, 3.4 GHz |
| Memory | 32 Channels (with Dual Streams) | 2 x 1 GB |
| | 64 channels (with Dual Streams) | 2 x 2 GB |
| Graphic Card | | PCI-Express, 800 x 600 (1280 x 1024 recommended), 32-bit color |

Software License

| | |
|----------------------------|----------------------|
| Free License | 32 channels |
| Maximum License | 64 channels |
| Increment for Each License | N/A |
| Optional Combinations | N/A |
| Dongle Type | Internal or external |

Note: It is recommended that you use the internal GV-USB Dongle to have the Hardware Watchdog function which restarts the PC when Windows crashes or freezes.

Compatible GeoVision IP Devices and Software

| GV-IP Devices | | Supported Version |
|------------------------|----------------|-------------------|
| GV-IP Camera | | V3.00 or later |
| GV-IP Speed Dome | GV-SD220 | V1.04 or later |
| | GV-SD2300/2301 | V1.08 or later |
| | GV-SD2411 | V1.01 or later |
| GV-Target Camera | | V1.00 or later |
| GV-Video Server | GV-VS11 | V1.03 or later |
| | GV-VS12 | V1.07 or later |
| | GV-VS14 | V1.01 or later |
| | GV-VS2400/2420 | V1.00 or later |
| GV-NVR System | GV-SNVR0400F | V1.10 or later |
| | GV-SNVR1600 | V1.10 or later |
| GV-Software | | Supported Version |
| GV-Recording Server | | V1.2.4.0 or later |
| GV-System (GV-DVR/NVR) | | V8.5.9.0 or later |
| GV-VMS | | V14.10 or later |

Note:

1. For the NAS application, it is required to use GV-IP Cameras (firmware V3.00 or later), GV-Target Cameras (firmware V1.02 or later), GV-EFD2101/EFD3101/EVD2100/EVD3100 (firmware V1.00 or later)..

2. Files recorded to GV-NAS Systems are stored in the MPEG4 format and those recorded to memory cards are stored in the AVI format.

Specifications

| Supported Hosts | | |
|-----------------------------|---|---|
| GV-System (GV-DVR/NVR) | 64 hosts | |
| GV-VMS | | |
| GV-Recording Server | | |
| GV-IP Camera | | |
| GV-Target Camera | | |
| GV-IP Speed Dome | | |
| GV-Video Server | | |
| GV-SNVR0400F/1600 | | |
| Live View | | |
| No. of Channels | 32 (free); 33 ~ 64 (with GV-USB dongle) | |
| Window Division | 4, 6, 8, 9, 10, 13, 16, 25, 36, 49, 64 | |
| Single Live View Window | 1 | |
| Display Mode | Fisheye dewarping, PIP, PAP, wide angle lens dewarping, fisheye object tracking, zoom, snapshot | |
| Audio | Two-way | |
| PTZ | Pan, tilt and zoom | |
| Host Recording (Monitoring) | Enable/disable monitoring of a single host or all hosts (for GV-IP Devices) | |
| Channel Status Indicator | Yellow | Not under monitoring |
| | Green | Under monitoring but not being recorded |
| | Red | Under monitoring and is being recorded |
| Host Batch Management | NAS setup, IP address configuration, time synchronization with GV-Edge Recording Manager(for GV-IP Devices) | |

Note: NAS setup is supported by GV-IP Camera (firmware V3.0 or later), GV-Target Camera (firmware V1.02 or later), GV-EFD2101/EFD3101/EVD2100/EVD3100 (firmware V1.00 or later)

| Playback | |
|--------------------------------|---|
| No. of Remote Playback windows | 1 |
| Playback Mode | Fisheye dewarping, wide angle lens dewarping, defog, PIP, PAP, Stabilizer |

Note: The Playback Mode is not available when you access the recordings saved on the NAS System.

| Others | |
|----------|--|
| Language | Arabic / Bulgarian / Czech / Danish / Dutch / English / Finnish / French / German / Greek / Hebrew / Hungarian / Indonesian / Italian / Japanese / Lithuanian / Norwegian / Persian / Polish / Portuguese / Romanian / Russian / Serbian / Simplified Chinese / Slovakian / Slovenian / Spanish / Swedish / Thai / Traditional Chinese / Turkish |

Note: All specifications are subject to change without prior notice.

Options

| | |
|---------------|---|
| GV-NAS System | GV-NAS System is a Linux-based, network attached storage device designed to store GV-IP Camera and GV-Target Camera recordings. |
|---------------|---|