



# LOUROE ELECTRONICS®

6955 VALJEAN AVE, VAN NUYS, CA 91406  
PH: (818)994-6498 / FAX: (818)994-6458  
techsupport@louroe.com / www.louroe.com

## TLMC-W

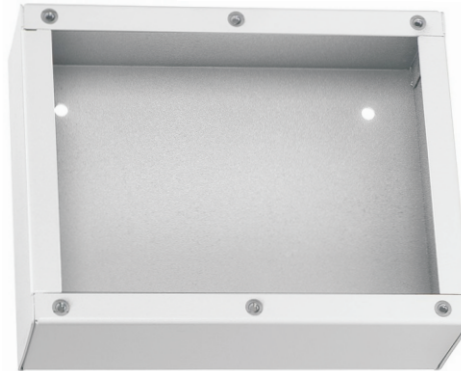
### REMOTE CALL STATION INSTALLATION AND OPERATING INSTRUCTIONS



**MODEL TLMC-W**  
Flush or SurfaceMount  
To Wall



**Backbox (plastic) for flush  
mounting to wall or  
flat surface**



**Backbox (metal) for surface  
mounting to wall or  
flat surface**

## DESCRIPTION

Model TLMC-W is two-way talk/listen remote call station. It contains a microphone, speaker and call button all within one housing. As part of a Louroe Sound Activated System, it can activate the Louroe Alarming Base Station (DG series) by a sound exceeding the threshold level or by pushing the call button. Once activated, person at the TLMC-W can communicate hands-free with the Louroe Base Station. A selector switch on PC board allows a choice of activation by pushbutton only, or a combination of pushbutton and sound activation. An LED is illuminated on the front panel of TLMC-W when a call is acknowledged from the Louroe Base Station.

Two backboxes are included with the TLMC-W. One (metal) for **surface** mounting to a wall or flat surface and one (plastic) for **flush** mounting.

# INSTALLATION AND OPERATING INSTRUCTIONS

## MICROPHONE AND SPEAKER WIRING CONNECTIONS

### Microphone Portion

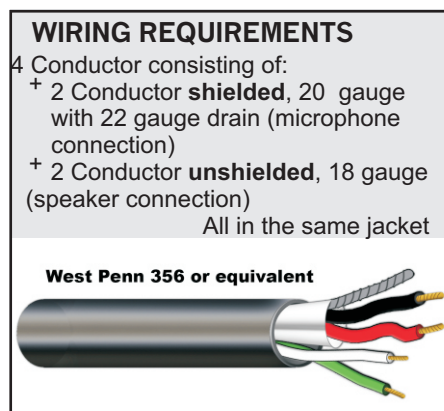
- 1) Connect cable to TLMC-W as shown in the wiring diagram page 3.
- 2) Connect microphone wires (2 cond. shielded) to terminal block of PC board marked "A", "B" and "C". If using West Penn 356:
  - a. Connect RED wire to terminal marked "A". (12Vdc power)
  - b. Connect BLACK wire to terminal marked "B". (Audio Output)
  - c. Connect DRAIN (bare) wire to terminal marked "C". (Ground)

### Speaker Portion

- 3) Connect speaker wires (2 cond. unshielded) to terminal block marked "SP", "6", or "7". Again If using West Penn 356:
  - a. Connect GREEN wire to terminal marked "SP". (speaker positive)
  - b. Connect WHITE wire to terminal marked "7". (70V) (speaker return)

**NOTE: Terminal "6" is not used with this application.**

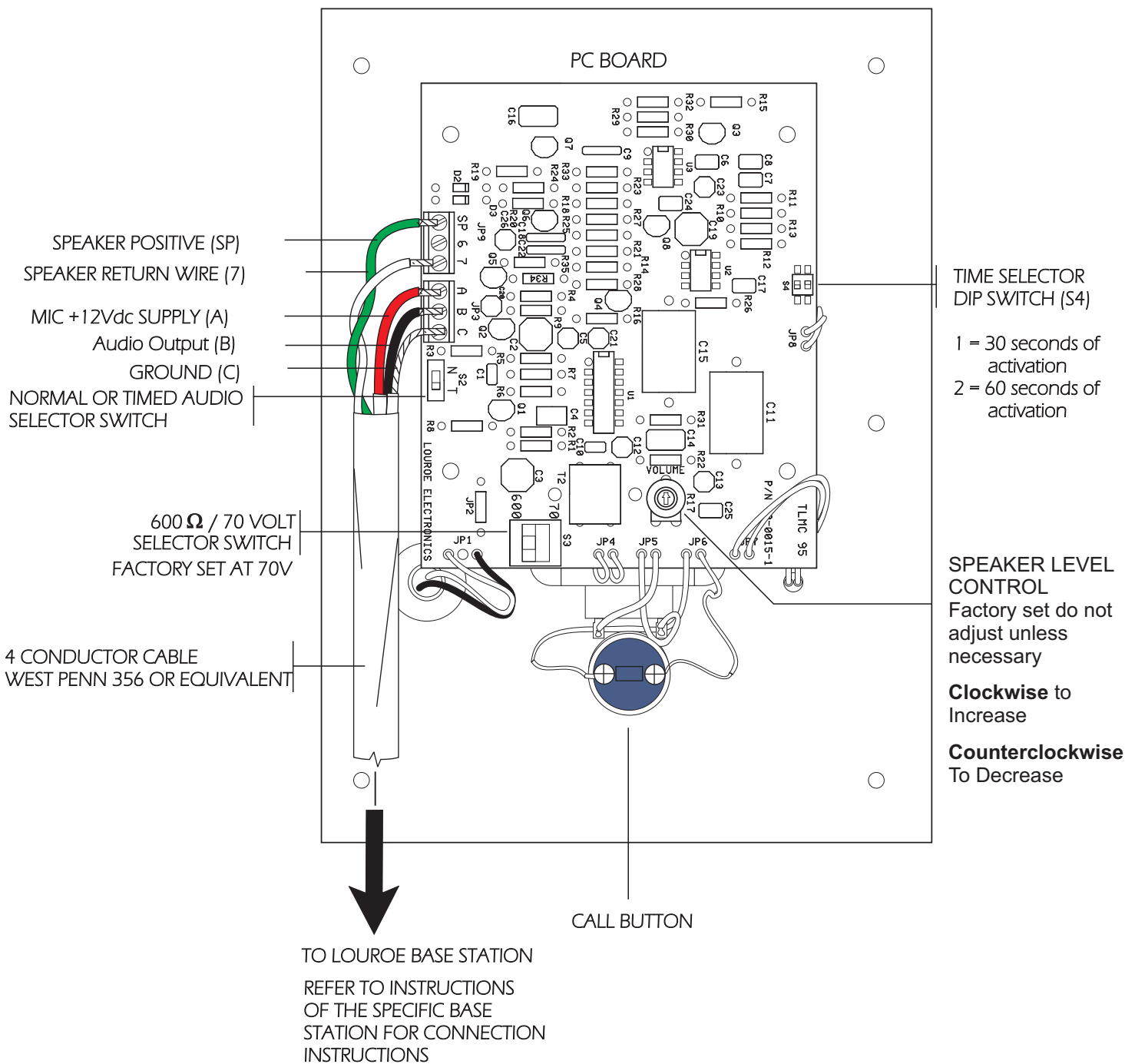
- 4) Connect other end of 4 conductor cable to the corresponding terminal blocks of the Louroe alarming base station. Refer to the instructions for the specific base station being used.



NOTE: If using wiring from other manufacturers, color code may vary.

# INSTALLATION AND OPERATING INSTRUCTIONS

## TLMC-W WIRING DIAGRAM REAR OF TLMC-W FACE PLATE



# INSTALLATION AND OPERATING INSTRUCTIONS

---

## OPERATIONS AND TEST OF TLMC-W

### 1) FOR NORMAL OPERATION (MANUAL RESET)

- A. The Louroe Base Station can be triggered either by pressing the call button or by generating a loud sound or shouting (when used with Alarming Base Stations DG-12II/25III Series).
- B. Move slide switch "S2" of TLMC-W PC Board to position marked "N".
- C. Once an alarm is initiated, the operator at the Louroe base station can respond to the TLMC-W that initiated the call. The call acknowledge LED on the front panel will illuminate indicating that the call was received and acknowledged by the operator.

### 2) FOR TIMED OPERATION (AUTOMATIC RESET)

- A. Move slide switch "S2" to position marked "T".
- B. Select the desired time for microphone to be activated --- 30 seconds or 60 seconds.  
For 30 seconds of activation, move switch #1 to ON position.  
For 60 seconds of activation, move switch #2 to ON position.  
Only one switch can be in the ON position.
- C. Press the call button to initiate an alarm. When the person at the base station responds, the "call acknowledge "LED" will illuminate, activating the TLMC-W's microphone for bi-directional communications with the base station.
- D. After time duration (either 30 seconds or 60 seconds), microphone in the TLMC-W will shut off. **To continue communications with the base station, press call button again.**

# INSTALLATION AND OPERATING INSTRUCTIONS

---

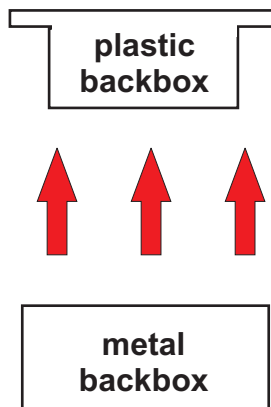
## INSTALLATION OF TLMC-W CALL STATION

Model TLMC-W is designed for mounting to a wall or flat surface. Included are two backboxes:

White plastic backbox is for **flush** mount  
Beige metal backbox is for **surface** mount

### Lift and separate plastic backbox from metal backbox

(2) backboxes



#### 1) SURFACE MOUNTING BACKBOX TO WALL

- a. Metal backbox has 4 mounting holes for securing to wall (screws not supplied).
- b. Drill an opening at top, bottom, side or back of backbox for passing wiring or connecting conduit.
- c. Six small screws are supplied for attaching TLMC-W face plate to backbox.

#### 2) FLUSH MOUNTING BACKBOX TO WALL

- a. If plastic flush mount backbox is to be used:
- b. Drill an opening at back side, as needed, to secure plastic backbox to proper position in wall opening.
- c. Drill an opening at a convenient location on backbox for passing wire or for conduit connection (top, bottom, etc.)
- d. Six plastic anchor bolts are supplied for securing TLMC-W face plate to backbox.

## SPECIFICATIONS

■ Output of microphone (Mic)	Line Level (0 dB, 600Ω @ 1KΩ)	
■ Frequency Response (Mic)	50 Hz to 15 kHz	
■ Current Drain	40 mA	
■ Speaker	4", 7W w/ 70V transformer	
■ Faceplate	8"H x 6 1/4"W	
■ Backbox	Surface Mount	8"H x 6 1/4"W x 2 3/4"D
	Flush Mount (Including flange)	8"H x 6 1/4"W x 2 5/8"D
■ Weight (Faceplate)	2 lbs	
■ Weight (with backboxes)	4 lbs 8 oz	
■ Shipping Weight	6 lbs	

# INSTALLATION AND OPERATING INSTRUCTIONS

---

## IMPORTANT NOTICE

When this equipment is used as part of an audio monitoring system, the law requires that the public be given notice of AUDIO MONITORING ON THE PREMISES. A decal notice is included with each microphone shipped.



Federal Law References:  
Federal Regulations, US Code, Title 18.  
Crime and Criminal Procedure, Sec 2510.

## WARRANTY

LOUROE ELECTRONICS® warrants that at the time of shipment products manufactured by LOUROE ELECTRONICS® to be free of defects in material and workmanship. Should a defect appear within one year (12 months) from date of shipment, LOUROE ELECTRONICS will, at its sole discretion, repair or replace the defective equipment. This equipment shall not be accepted for repair or return without prior notification by LOUROE ELECTRONICS®.

This warranty does not extend to any Louroe product that has been subjected to improper or incorrect installation, misuse, accident, or in violation of installation instructions provided by LOUROE ELECTRONICS®.

Returned shipments to LOUROE ELECTRONICS® shall be at customer's expense. LOUROE ELECTRONICS® will return the equipment prepaid via best way.

MANUFACTURED  
IN THE

