



LOUROE ELECTRONICS®

6955 VALJEAN AVE, VAN NUYS, CA 91406
PH: (818)994-6498 / FAX: (818)994-6458
techsupport@louroe.com / www.louroe.com

TLM-E

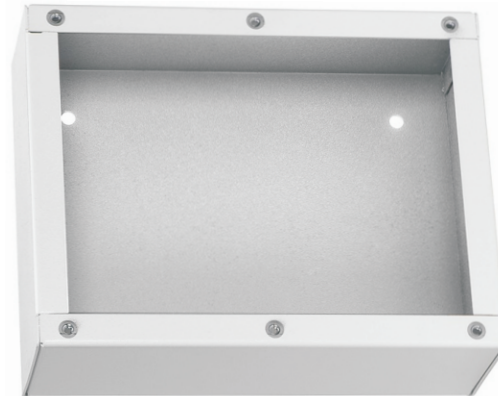
SPEAKER/MICROPHONE

INSTALLATION AND OPERATING INSTRUCTIONS

MODEL TLM-E



BACKBOX (PLASTIC) FOR FLUSH
MOUNTING TO WALL
OR FLAT SURFACE



BACKBOX (METAL) FOR SURFACE
MOUNTING TO WALL
OR FLAT SURFACE

DESCRIPTION

Models TLM-E is a two-way speaker/microphone with an electret condenser microphone and 4" speaker, all within one housing. As part of a Louroe audio system, It provides two-way communication between the remote area and the audio receiving device (Louroe Base Station, etc). Provided with the unit are plastic back box for flush mounting to a wall and metal back box for surface mounting. Can be used for outdoor applications. This unit is weather resistant.

INSTALLATION AND OPERATING INSTRUCTIONS

TLM-E MICROPHONE AND SPEAKER CONNECTIONS

Using 4- Conductor cable shown below as example, connect as follows: (See connection diagram p. 3)

WIRING REQUIREMENTS

- 4 Conductor consisting of:
 - ☐ 2 Conductor shielded, 20 gauge with 22 gauge drain (microphone connection)
 - ☐ 2 Conductor unshielded, 18 gauge (speaker connection)

All in the same jacket



Wire Color Code

RED - 12Vdc Power
BLACK - Audio Output
BARE - Ground

} Microphone
Portion

GREEN - Speaker Positive
WHITE - Speaker Negative

} Speaker
Portion

If using wiring from other manufacturers, color code may vary.

MICROPHONE CONNECTION OF TLM-E

On the back side of TLM-E face plate is a PC Board with a small 3-pin terminal block marked A,B,C.

- 1) Connect **RED** wire to terminal block marked "A" (+12Vdc)
- 2) Connect **BLACK** wire to terminal block marked "B" (Audio Output)
- 3) Connect **DRAIN** wire (bare) to terminal blocked marked "C " (Ground)

SPEAKER CONNECTION OF TLM-E

Attached to the 70V transformer of TLM-W are two speaker wires, **GREEN** and **WHITE**.

Using wire nuts,

- 1) Connect **GREEN** wire (positive) of recommended cable to **GREEN** wire of transformer
- 2) Connect **WHITE** wire (negative) of recommended cable to **WHITE** wire of transformer

TLM-E CONNECTION TO LOUROE BASE STATION

Connect the other end of cable to the terminal block(s) on the rear panel of the base station.

Most Louroe base stations have terminal blocks identical or similar to the TLM-E.

Should blocks differ from the example below, refer to the installation instructions for the specific base station being used.

For microphone connection:

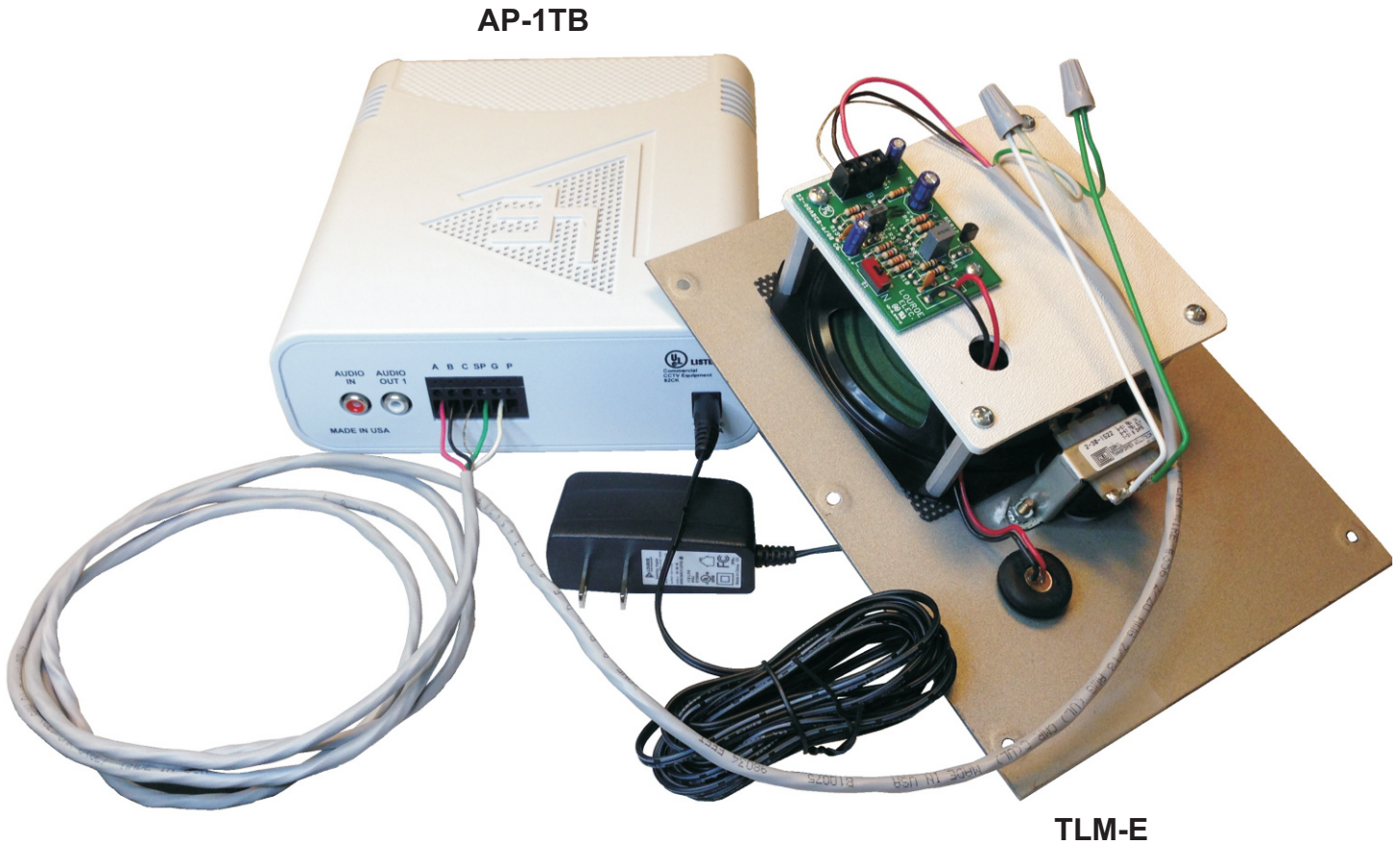
- 1) Connect terminal A of TLM-E to terminal A of Louroe Base Station
- 2) Connect terminal B of TLM-E to terminal B of Louroe Base Station
- 3) Connect terminal C of TLM-E to terminal C of Louroe Base Station

For speaker connection:

- 4) Connect **GREEN** wire of TLM-E to terminal SP of Louroe base station (positive)
- 5) Connect **WHITE** wire of TLM-E to terminal G of Louroe base station (negative)

INSTALLATION AND OPERATING INSTRUCTIONS

INTERCONNECTION DIAGRAM FOR MODEL TLM-E SPEAKER/MICROPHONE AND AP-1TB BASE STATION (SHOWN AS AN EXAMPLE OF A BASE STATION)



**Refer To Installation Instructions
For The Specific Base Station Being Used**

INSTALLATION AND OPERATING INSTRUCTIONS

INSTALLATION OF TLM-E SPEAKER/MICROPHONE

Model TLM-E is designed for mounting to a wall or flat surface. Included are 2 back boxes, a metal backbox for surface mounting to a wall and a plastic back box for flush mounting or flat surface.

1. Drill an opening at top, bottom, side or back for passing wiring or connecting conduit. Four holes are located inside the metal backbox for attaching back box to a wall.

Four screws are supplied for attaching the TLM-E faceplate to the back box.

SPECIFICATIONS

| | |
|----------------------------|-------------------------------|
| Output of microphone (Mic) | Line Level (0 dB, 600Ω @ 1KΩ) |
| Frequency Response (Mic) | 40 Hz to 15 kHz |
| Current Drain (mic) | 10 mA |
| Speaker | 4", 7W w/ 70V transformer |
| Faceplate | 8" L x 6 1/4" W |
| Backbox | 8" L x 6 1/4" W x 2 3/4" D |
| Weight | 1 lb 6 oz |
| Shipping Weight | 6 lbs |

INSTALLATION AND OPERATING INSTRUCTIONS

NOTES

INSTALLATION AND OPERATING INSTRUCTIONS

IMPORTANT NOTICE

When this equipment is used as part of an audio monitoring system, the law requires that the public be given notice of AUDIO MONITORING ON THE PREMISES. A decal notice is included with each microphone shipped.



Federal Law References:
Federal Regulations, US Code, Title 18.
Crime and Criminal Procedure, Sec 2510.

WARRANTY

LOUROE ELECTRONICS® warrants that at the time of shipment products manufactured by LOUROE ELECTRONICS® to be free of defects in material and workmanship. Should a defect appear within one year (12 months) from date of shipment, LOUROE ELECTRONICS will, at its sole discretion, repair or replace the defective equipment. This equipment shall not be accepted for repair or return without prior notification by LOUROE ELECTRONICS®.

This warranty does not extend to any Louroe product that has been subjected to improper or incorrect installation, misuse, accident, or in violation of installation instructions provided by LOUROE ELECTRONICS®.

Returned shipments to LOUROE ELECTRONICS® shall be at customer's expense. LOUROE ELECTRONICS® will return the equipment prepaid via best way.

**MANUFACTURED
IN THE**

