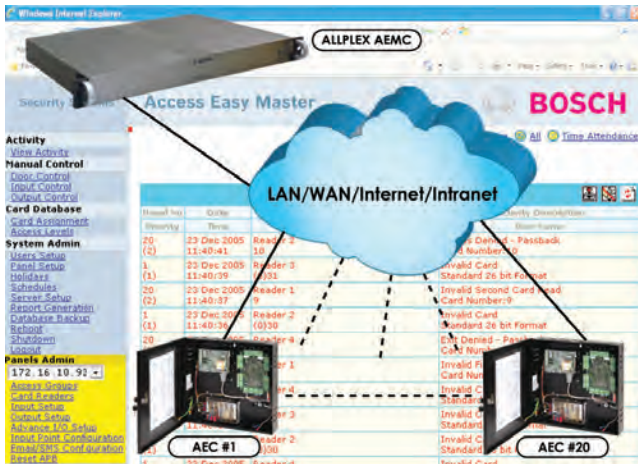




# ALLPLEX Access Easy Master Controller



- ▶ Supports a maximum of 20 AECs over WAN/LAN
- ▶ 16 GB Solid-state Drive (SSD)
- ▶ 1U 19" Rackmount, fanless design
- ▶ Encrypted and secure communication
- ▶ Full Web Client Architecture
- ▶ Distributed Network Capabilities

Built on the same technology platform of the Access Easy Controller (AEC), the ALLPLEX Access Easy Master Controller (ALLPLEX AEMC) offers a centralized access management for all the AECs in the network. With ALLPLEX AEMC, you can now expand your system from a basic 16-reader installation to a maximum of 320-reader installation. All basic application modules run on the ALLPLEX AEMC which behaves as a web server to deliver a single, seamlessly integrated solution. The integrated access control and alarm monitoring subsystems deliver maximum protection, simple operation and cost efficiency.

All ALLPLEX AEMC applications incorporate the most advanced technologies available, including object-oriented software and advanced client/server SQL database. All client applications are accessible via a standard web browser application like Microsoft Internet Explorer, Netscape, or Mozilla Firefox.

## Functions

### Platform and Hardware Independent

Since all applications reside in a web server, ALLPLEX AEMC is independent of the client computer hardware type, operating systems and versions. The communication network is based on Ethernet and TCP/IP. ALLPLEX AEMC has also been designed to seamlessly integrate with external applications and peripheral devices. ALLPLEX AEMC has many built-in automatic tools for easy administration, such as import/export data functions and report generation.

### Scalability

ALLPLEX AEMC is designed for small to medium sized installations, ideal for deployment to multiple remote offices or buildings. The ALLPLEX AEMC is designed to manage up to 20 AECs (16 readers maximum per AEC) that control up to 320 access readers and 1,280 I/O points via a fast LAN/WAN network.

### Centralized Database Management

Database for each AEC is configured by administrators at the ALLPLEX AEMC. The database of the ALLPLEX AEMC is then synchronized with all the AEC databases on the fly. Advanced access groupings and 1,024 access levels definition offer wide ranging access control setup of all cardholders in the entire system.

### Centralized Alarm Handling

ALLPLEX AEMC provides centralized alarm handling received from AECs, transactions and audit trails logging, and report generation, all operated through standard browser software.

### Distributed Network Architecture

ALLPLEX AEMC's distributed network architecture allows client workstations and AECs to be installed directly on any existing Ethernet network. All local access decisions are made and processed at the AEC, minimizing network traffic and providing real time access processing and decision. System administration, monitoring and remote control functions can be performed from any client workstation on the network.

### Certifications and Approvals

Region	Certification	
Europe	CE	
USA	UL	
	FCC	Part 15 Class A
Australia	CTICK	

### Installation/Configuration Notes

#### Access Control

- Single site or multi-sites access control management
- Access control of doors, elevators or car parking structures
- Distributed, scalable/segmented architecture

#### Administration and User

- Support up to 25 system administrators
- 128-bit SSL encryption for web browser
- Up to 8 character alphanumeric, case sensitive user ID and password
- Up to 25 concurrent login

#### System Parameters

- Controls and manages up to 20 AECs
- Compatible with AEC1.0 SW2 (version 5.6.37.49 and above) and AEC2.1 (version 2.1.7.5 and above)
- 320 Wiegand access readers system wide (16 per AEC)
- 1,024 global access levels system wide
- 254 local access groups per AEC
- 256 global schedules
- 32 global holidays
- 32 global special holidays

#### Card Access Parameters

- Card capacity up to 409,600 cardholders system wide (20,480 per AEC)
- 16 programmable Wiegand card formats
- Multi-card function type: Normal, Attendance Capture, Arm/Disarm

- Multi-card operation: Card only, Card + User PIN code, Reader PIN code
- Single and batch cards entry feature - card add/delete
- Wild card search capability by selectable cardholders' profile

### Global I/O

- 640 input monitoring points system wide (32 per AEC)
- 2-state and/or 4-state alarm monitoring (selectable)
- 640 relay output points system wide (32 per AEC)
- Remote arming/disarming via web browser
- Arming/disarming by single or group of points
- Programmable alarm text instructions for guard's action, for each input monitoring point
- Advanced programmable I/O features for global automation process
- Any I/O may be linked globally to create an automation process
- Access control and system events may be linked to I/O for secondary events
- Any alarm condition can drive any relay output
- Full alarm management functions for up to 128 priority levels
- Online hardware equipment diagnostics and reporting

### Global Access Level and Local Access Groups

- Each definition consists of doors and time schedules
- Access to each door may have its own unique time schedule

### Activities Monitoring and Controls

- Real-time transaction monitoring of all events and alarms, such as door-left-open, door-forced-open, duress, anti-passback violations, and more...
- Display all activities as they occur, normal or alarms. Alarm messages will remain in alarm screen if the sensor remains in alarm mode even it has been acknowledged
- Communication line failures, tampers, power fails, etc. are all reported as alarm conditions
- Remote control functions for door lock/unlock via web browser
- Remote control functions for arming/disarming of alarm devices via web browser
- Remote control functions for all I/O via web browser
- Alarm handling at ALLPLEX AEMC
- All alarm events will generate audio and visual alarms on the monitoring computer. Alarms with higher priority will be displayed and stacked on top of all alarms of lower priority
- Alarm messaging for visual display on monitoring computers or via e-mail or SMS messaging to GSM cell phone network on AEC
- All e-mail events, status and alarm messages include description of event, ID, location, date and time stamp on AEC
- Any door or group of doors may be unlocked from the computer for administrators given such access rights
- Define auto unlock time periods, based on day and time for any doors. Time refers to a start and end time. Doors will not unlock during holidays unless programmed to do so

- Any input or group of inputs may be automatically armed/disarmed based on time periods for the day and time. During holidays, system will remain armed 24 hours
- Any input or group of inputs may be armed/disarmed at any devices and/or from the computer for users give such access rights
- If higher access control security measures are required, Card + User PIN code mode can be switched in automatically based on time control e.g. after office hours and holidays
- Management staff may have free access 24 x 7, and PIN codes may be activated full day during holidays

#### Audit Trails and Reports Generation

- Any changes made to database are logged with the name of the user making the changes and date and time of the changes
- Activity and Audit Trail report generation
- Reports can be generated by devices, location, events, alarms cardholders, time and date criteria
- Users and administrators' access rights
- Cardholders database
- I/O points and database setup
- System status reporting (e.g. network communication)

#### Database

- Automatic database synchronization between ALLPLEX AEMC and AEC
- Database backup (ALLPLEX AEMC + AEC) to remote computers or archive device
- All AEC and ALLPLEX AEMC parameters will be stored in the ALLPLEX AEMC and can be backed up to remote computer for long term archive
- Database for AEC and ALLPLEX AEMC can be restored when any AEC or ALLPLEX AEMC fails

#### Advanced Functions

##### Off-line Processing

- All access control decisions are made by the AEC in off-line mode when communication with the ALLPLEX AEMC is down. Full transactions and database are automatically synchronized upon restoration of communication lines

##### Anti-passback

- Each access reader can be assigned to an anti-passback zone and a direction (in or out)
- Global anti-passback control for 16 access readers per AEC is available

##### Elevator Control

- Each AEC supports up to 32 floors
- Each relay controls 1 floor

#### Parts Included

Quantity	Component
1	ALLPLEX AEMC
1	Power adapter
1	Power cord
1	Utility CD
1	Quick installation guide

#### Technical Specifications

##### System

Form Factor	1U 19" Rackmount, fanless design
Processor	Intel® processor
System Memory	1 GB DDR2
Storage	16 GB solid-state drive (SSD)
LED	One PWR LED One HDD LED
Power Supply	+12V DC-in adapter
Dimension (W x D x H)	430 mm x 300 mm x 44 mm (16.9 in x 11.8 in x 1.7 in)

##### External I/O Ports

Serial Ports	Two COM ports COM 1: RS-232 only COM 2: RS-232/422/485 configurable
Universal Serial Bus	Four USB 2.0 ports
Ethernet	Two RJ45 10/100/1000BASE-TX ports
Display Ports	One VGA port
Rear I/O	One PS/2 keyboard/mouse One DC-in jack One MIC-in/LINE-out jack

##### Environmental Conditions

Temperature (Operating)	0°C to 40°C (32°F to 104°F)
Temperature (Storage)	-20°C to 80°C (-4°F to 176°F)
Humidity (Operating)	10% RH to 90% RH
Humidity (Storage)	95% @ 40°C, non-condensing
Vibration	0.5G / 5 Hz to 500 Hz
Shock	15G with 11m/sec

##### Inputs

Access Reader	16 per AEC system, 320 system wide
Monitoring Point	64 per AEC system, 1,280 system wide

##### Outputs

Control Points	64 control relay per AEC system, 1,280 system wide
----------------	--

**Controller**

Concurrent Users	24 concurrently + 1 super-user
User Licenses	Max. 25 user account, up to 8 character alphanumeric, case sensitive user IDs and passwords
Events	100,000 transaction history, stamped with date and time
Database Integrity	Encryption used for user ID and PIN
Max. Numbers of AEC	Support up to 20 AECs
Number of Cardholders	409,600 (20,480 per AEC)
Number of Access Groups	5,080 (254 per AEC)
Number of Access Levels	1,024 (2 access groups per access level)
Number of Global Schedules	255
Number of Global Holidays	32 regular and 32 special holidays

**Ordering Information****ALLPLEX AEMC**

ALLPLEX AEMC rackmount server, with 16 GB solid-state drive.

**APC-AEMC-SVR****ALLPLEX AEMC (ZH)**

ALLPLEX AEMC rackmount server, with 16 GB solid-state drive. (P.R. China only)

**APC-AEMC-SVRZ**

**Americas:**  
Bosch Security Systems, Inc.  
130 Perinton Parkway  
Fairport, New York, 14450, USA  
Phone: +1 800 289 0096  
Fax: +1 585 223 9180  
security.sales@us.bosch.com  
www.boschsecurity.us

**Europe, Middle East, Africa:**  
Bosch Security Systems B.V.  
P.O. Box 80002  
5600 JB Eindhoven, The Netherlands  
Phone: +31 40 2577 284  
Fax: +31 40 2577 330  
emea.securitysystems@bosch.com  
www.boschsecurity.com

**Asia-Pacific:**  
Robert Bosch (SEA) Pte Ltd, Security Systems  
11 Bishan Street 21  
Singapore 573943  
Phone: +65 6571 2808  
Fax: +65 6571 2699  
apr.securitysystems@bosch.com  
www.boschsecurity.asia

**Represented by**