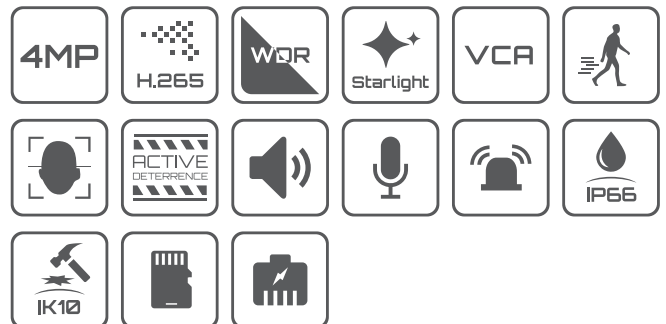


AMX-4IEN8-4X

4M 4x IR Network Active Deterrence 3" Mini PTZ



4MP 4× Network IR mini PTZ , adopts high quality 4× optical AF lens and could output max 4MP (2560×1440) at 30 fps ultra HD stream, covering a medium size area. Featuring its high performance, it could meet the demand of small-sized video surveillance application. The H.265 encoder could reduce video bandwidth to 50% of H.264 without loss of image details. With high-performance AI engine, it supports human/vehicle detection, classification and auto tracking and active deterrence.



MODEL(S) AVAILABLE

KEY FEATURES

- ▶ Progressive scan BSI+NIR image sensor
- ▶ Up to 2560 × 1440 resolution
- ▶ 4× optical zoom, fast and accurate
- ▶ Smart IR up to 151 ft (50 m), 2 White LED 98 ft (30 m)
- ▶ Bi-directional audio, built-in Mic & Speaker
- ▶ 98 ft (30 m) for audible warnings, 7m for voice recording
- ▶ AI-based human vehicle detection & classification and tracking, perimeter precaution, cross line, etc.
- ▶ SD/TF card chamber, Reset button, Alarm in/out
- ▶ 12 V DC / PoE+ power supply, easy installation
- ▶ IP66 Water-proof, IK10

Product Specifications

Camera	
Image Sensor	1/2.5" 4MP progressive scan BSI/NIR
Image Resolution	2592 (H) × 1944 (V)
Electronic Shutter	50 Hz: 1/25 s ~ 1/25,000 s 60 Hz: 1/30 s ~ 1/30,000 s
Minimum Illumination	0.01 lux @ F1.6, AGC ON (Color)
	0.002 lux @ F1.6, AGC ON (B/W)
	0 lux with IR
Smart IR	N/A
S/N Ratio	≥ 52 dB
IR Distance	151 ft (50 m)
Lens Type	Focal lens
Iris Type	N/A
Focal Length	2.8 ~ 12 mm
Optical Zoom	4×
Angle of View	Horizontal: 97° ~ 31° ±5%
	Vertical: 51° ~ 18° ±5%
	Diagonal: 115° ~ 36° ±5%
Max. Aperture	F1.6
Pan / Tilt / Rotation	Pan: 0° ~ 355°; Tilt: -5° ~ 90°; Rotation: N/A

Compression Standards	
Video Compression	H.265+ / H.264+ / H.265 / H.264 / MJPEG
Streaming Capability	3 Streams
Video Frame Rate	Main Stream: 2560×1440, 2048×1536, 1920×1080, 1280×960, 1280×720 @ 25/30 fps
	Sub Stream: 704×576, 640×480, 352×288 @ 25 fps 704×480, 640×480, 352×240 @ 30 fps
	Third Stream: 1280×720, 704×576, 640×480, 352×288 @ 25 fps 1280×720, 704×480, 640×480, 352×240 @ 25 fps
Video Resolution (Max.)	4M (2560 × 1440)
Video Bitrate	64 Kbps ~ 16 Mbps
Video Bitrate Type	VBR / CBR

Image and Feature Support	
Wide Dynamic Range	120 dB true WDR
BLC Mode	Yes
HLC Mode	Yes
White Balance	Auto / Manual / Indoor / Outdoor
Day / Night	Auto / Manual
Gain Control	Auto / Manual
Digital Noise Reduction	3D DNR
Motion Detection	Yes
Electronic Image Stabilization	N/A
Defog	Yes
Digital Zoom	N/A
Flip	N/A
Mirror	N/A
Privacy Masking	4

Image Rotation	N/A
ROI	N/A
Picture Overlay	Logo picture could be overlaid on video with 128×128 pixels, 24bits BMP format
Font Overlay	Max. 15 characters per line, 8 lines max, white color or red color
Image Settings	Flip, Mirror, Saturation, Brightness, Contrast, Sharpness, AGC, and AWB adjusted by client
IPC Alarm	N/A
Alarm Input	1
Alarm Output	1
Audio Compression	G.711 A/U

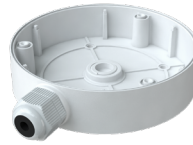
Intelligent and Functions	
Basic Event	Motion detection, video tampering alarm, exception (network disconnected, IP address conflict, SD full, SD error)
Face Recognize	Support human face detection, max 15 human faces per scene. Support face capture, tracking, comparison, edge storage
Road Traffic	Vehicle detecting and tracking, etc.
Smart Detection	Tripwire, Bi-directional tripwire, Illegal intrusion detection, Region entrance detection, Region exiting detection, Unattended baggage detection, Object removal detection, etc.
Smart Tracking	Smart tracking of human or vehicle, auto/manual
Active Deterrence	Flush strong white light and predefined voice upon invaders detected. Support predefined voice
Two-way Talk	Yes

Network & Interface	
Ethernet	RJ-45 (10/100 Adaptive Ethernet), support PoE+
Network Protocol	HTTP, HTTPS, IPv4/IPv6, 802.1x, QoS, FTP, SMTP, UPnP, SNMP, DNS, DDNS, NTP, RTSP, RTP, TCP/IP, UDP, IGMP, ICMP, DHCP, PPPoE
Network Interoperability	ONVIF
Streaming Method	N/A
Network Max. Users	16
Storage	Built-in Micro SD Card (support max. 256 GB)
Video Output	N/A
General Function	Watermark, IP address filtering, video mask, heartbeat, password protection, image distortion correction
Audio Interface	1/1
Built-in Mic	Yes
Built-in Speaker	Yes
RS485	Yes
RS232	Yes
Reset Button	Yes
Heater and Fan	One electrical heater, no fan
Water Removal	Dust and Water-resistant coating for lens cover

Product Specifications

General	
Power Supply	DC 12 V / PoE+ (802.3.at, class 3)
Power Consumption	AVG. 4.5 W; Max. 24.5 W (IR/White LED, Speaker ON, PT Rotation)
Operating Temperature	-30 ~ 55°C (-22 ~ 131°F) / Less than 90% RH
Storage Temperature	-40 ~ 65°C (-40 ~ 149°F) / Less than 95% RH
Protection	IP66, IK10
Casing	Aluminum Alloy
Dimensions	162 mm × ø 130 mm (6.4" × ø 5.1")
Net Weight	Approx. 1200 g (2.645 lb)
Installation	Ceiling mounting; Wall mounting
Certificate	ROHS, CE, FC, 3C

Product Accessories



B12-W



BRACKET13-W

Product Dimensions (mm)

