

AMX-5I151T-IRASPV/28

5MP WDR IR Bullet AI Network Camera



iMaxCamPro Series AI products adopt the most advanced AI technologies, including deep learning algorithms that primarily target people and vehicles, which provides higher flexibility and accuracy for end-user. This enables the ENS Diamond Series AI series to offer various advanced applications such as Face Recognition, ANPR, Metadata, People Counting, traffic data statistics, etc. The complete lineup of ENS AI includes network (PTZ) cameras, network video recorders, servers, and platform management products. Beyond seeing the world, the power of AI allows devices to perceive the environment and understand the world in a better way.



MODEL(S) AVAILABLE

KEY FEATURES

- ▶ 5MP, 1/2.7" progressive-scan CMOS Sensor
- ▶ H.265 & H.264 triple-stream encoding
- ▶ Smart H.265+ and Smart H.264+ Dual Codec
- ▶ 5MP (2592×1944) @ 20 fps
- ▶ 120 dB true WDR, Day/Night(ICR), 3D DNR, AWB, AGC, BLC
- ▶ 2.8 mm fixed lens
- ▶ 1/1 Alarm in/out, 1/1 Audio in/out
- ▶ Max. IR distance: 115 ft (50 m)
- ▶ Micro SD memory, IP67

Product Specifications

Camera	
Image Sensor	1/2.7" 5MP Progressive Scan CMOS
Image Resolution	2592 (H) × 1944 (V)
ROM	128 MB
RAM	512 MB
Electronic Shutter	Auto/Manual 1/3 s ~ 1/100,000 s
Minimum Illumination	0.0048 Lux @ F1.6 (1/3 s, 30 IRE) 0.043 Lux @ F1.6 (1/30 s, 30 IRE) 0 Lux @ F1.6 (IR on)
S/N Ratio	N/A
IR LEDs	3
IR Distance	115 ft (52 m)
Illuminator On/Off Control	Auto / Manual
Lens Type	Fixed
Focal Length	2.8 mm
Angle of View	Horizontal: 102° Vertical: 71° Diagonal: N/A
Max. Aperture	F1.6
Close Focus Distance	2.95 ft (0.9 m)
Pan / Tilt / Rotation	Pan: 0°~360° / Tilt: 0°~90° / Rotation: 0°~360°

Artificial Intelligence	
Perimeter Protection	Tripwire, Intrusion (Human & Vehicle classification)
People Counting	Line crossing people counting, Region people counting

Video Standard	
Video Compression	H.265+ / H.265 / H.264+ / H.264 / H.264B / H.264H / MJPEG (sub stream)
Smart Codec	N/A
Video Frame Rate	Main stream: 2592 × 1944 @ 20 fps Sub stream 1: D1 @ 20/30 fps Sub stream 2: 1080P @ 13 fps
Streaming Capability	3 Streams
Video Resolution	5M (2592×1944) / 4M (2688×1520) / 2304×1296 / 1080P (1920×1080) / 1.3M (1280×960) / 720P (1280×720) / D1(704×576 / 704×480) / VGA(640×480) / CIF (352×288 / 352×240)
Bit Rate Control	CBR; VBR
Video Bitrate	H264: 32 Kbps ~ 8192 Kbps H265: 19 Kbps ~ 8192 Kbps
Day / Night	Color; Color; B/W
BLC Mode	Yes
HLC Mode	Yes
Wide Dynamic Range	120 dB true WDR
White Balance	Auto / Natural / Street Lamp / Outdoor / Manual
Gain Control	Auto / Manual
Digital Noise Reduction	3D DNR
Motion Detection	On / Off (4 areas, rectangular)
Region of Interest	4

Electronic Image Stabilization	N/A
Smart Illumination	Yes
Defog	Yes
Exposure Mode	N/A
Mirror	Yes
Privacy Masking	Yes
Image Rotation	0° / 90° / 180° / 270°
Motion Detection	Yes

Network & Interface	
Ethernet	RJ-45 (10/100 Base-T)
SDK and API	N/A
Network Protocol	HTTP; TCP; ARP; RTSP; RTP; UDP; RTCP; SMTP; FTP; DHCP; DNS; DDNS; PPPoE; IPv4/v6; SNMP; QoS; UPnP; NTP
Network Interoperability	ONVIF(Profile S/Profile G); CGI; P2P; Milestone; Genetec
Scene Self-Adaptation	N/A
Streaming Method	Unicast / Multicast
Network Max. Users	20
Storage	NAS; FTP; Micro SD Card Slot (support max. 256 GB)
Web Viewer	IE / Chrome / Firefox / Safari
Management Software	Smart PSS/ DSS / P2P
Mobile	iOS / Android
BNC	N/A
Audio I/O	1/1, built-in speaker
Alarm I/O	1/1
Audio Compression	G.711a, G.711mu, AAC, G.726, G.723
RS485	N/A
Built-in MIC	N/A

General	
Power Supply	12 V DC / PoE (IEEE 802.3af, class 0)
Power Consumption	12 V DC: 2.1 W, 7.2 W (IR on) PoE: 2.7 W, 8.5 W (IR on)
Operating Temperature	-30°C ~ 60°C (-22°F ~ 140°F) / ≤ 95% RH
Storage Temperature	5°C ~ 40°C (41°F ~ 104°F) / ≤ 95% RH
Protection	IP67
Casing	Metal
Dimensions (L × W × H)	244.10 mm × 79.0 mm × 75.90 mm (9.61" × 3.11" × 2.99")
Net Weight	815 g (1.80 lb)
Gross Weight	1080 g (2.38 lb)
Certifications	CE-LVD:EN60950-1 CE-EMC:Electromagnetic Compatibility Directive 2014/30/EU FCC:47 CFR FCC Part 15, Subpart B UL/CUL: UL60950-1 CAN/CSA C22.2 No.60950-1-07

Product Specifications

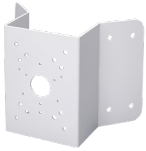
Product Accessories



PFA122



PFA152-E



PFA151

Product Dimensions (mm [inch])

