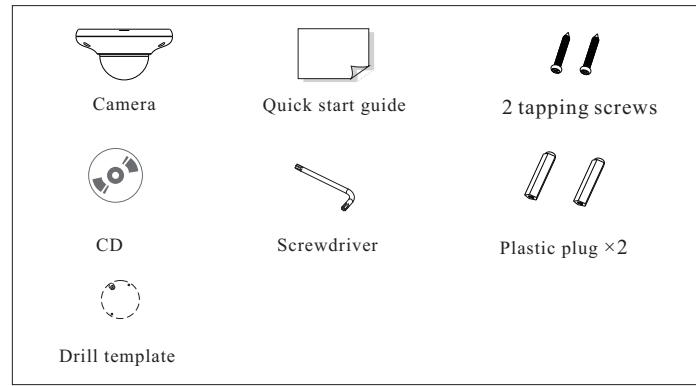




Network Camera Quick Start Guide

- Please read this instruction carefully before using the product and keep it for further reference.
- All the examples and pictures used here are for reference only.
- The contents of this manual are subject to change without notice.

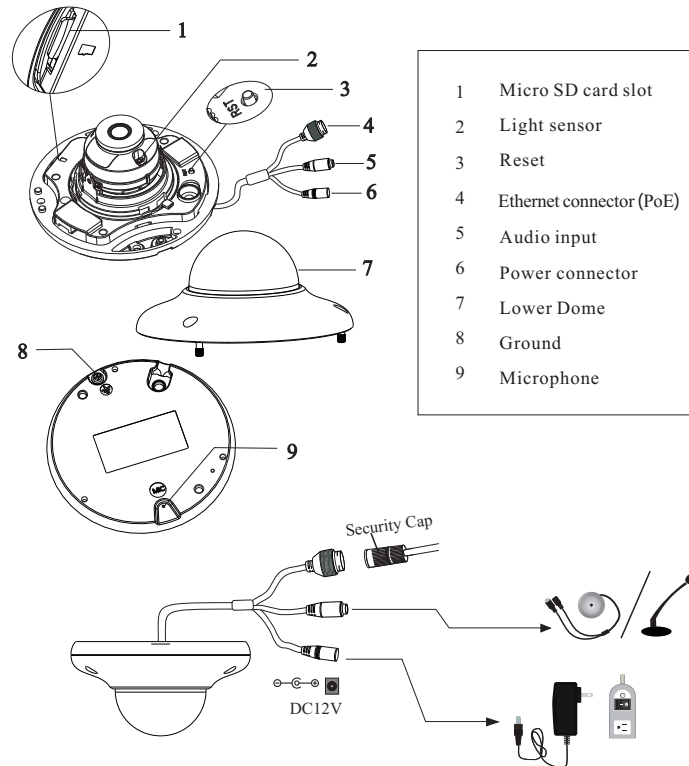


1 Warning and Caution

- If the product does not work properly, please contact your dealer or the nearest service center. Never attempt to disassemble the camera yourself. (We shall not be responsible for any problems caused by unauthorized repair or maintenance.)
- Do not allow water or liquid intrusion into the camera.
- In the use of the product, you must be strict compliance with the electrical safety regulations of the nation and region. When the product is mounted on wall or ceiling, the device shall be firmly fixed.
- Do not use camera beyond specified voltage range.
- Do not drop the camera or subject it to physical shock.
- Do not directly touch the camera when installing.
- The product must be grounded to reduce the risk of electric shock.
- You must wear anti-static gloves or discharge static electricity before removing the lower dome (bubble).
- Avoid touching the camera lens.
- If cleaning is necessary, please use clean cloth to wipe it gently.
- Do not aim the camera at the sun or extra bright place.
- Do not place the camera in extremely hot, cold (the operating temperature shall be -30°C~60°C), dusty or damp locations, and do not expose it to high electromagnetic radiation.
- To avoid heat accumulation, good ventilation is required for operating environment.

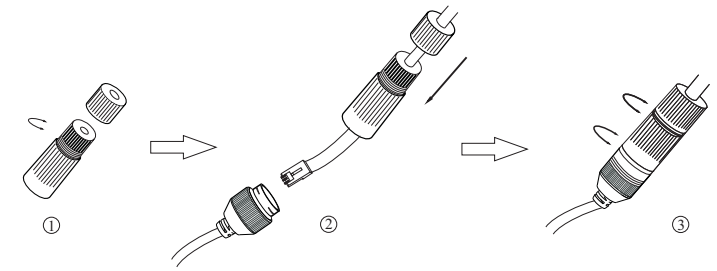
2 Package

3 Overview



- * 1 It is recommended to install the security cap for outdoor installation.
- * 2 If the PoE switch is used to power the camera, DC12V power supply is not required.

► Connecting Network Cable

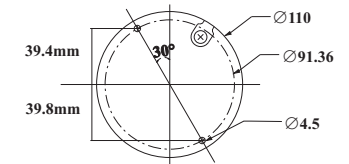


- ① Loosen the nut from the main element.
- ② Run the network cable (without RJ 45 connector) through the both elements. Then crimp the cable with RJ 45 connector.
- ③ Connect the cable to the hermetic connector. Then tighten the nut and the main cover.

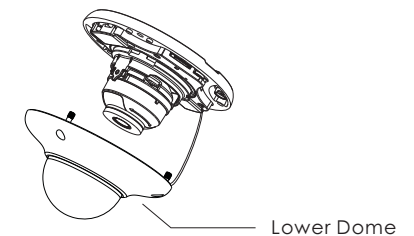
4 Installation

Please make sure that the wall or ceiling is strong enough to withstand 3 times the weight of the camera. Please install and use the camera in the dry environment. You'd better install back the lower dome less than 4 hours after removing it.

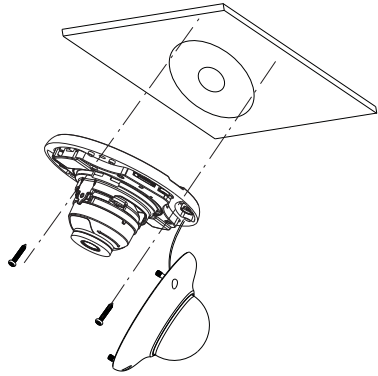
- ① Drill the screw holes and the cable hole on the wall according to the drill template.



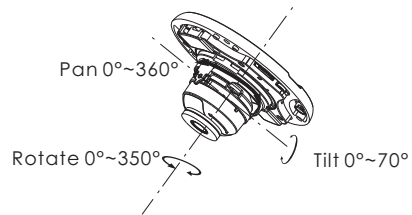
- ② Loosen the screws to remove the lower dome from the camera.



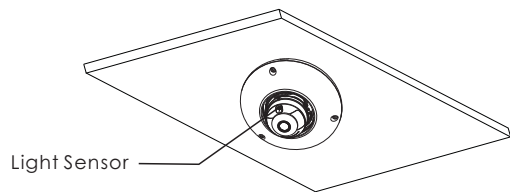
- ③ Route and connect the cables.
- ④ Secure the mounting base with camera to the wall with screws as shown below.



- ⑤ Three-axis adjustment. Before adjustment, preview the image of the camera on a monitor and then adjust the camera according to the figure below to get an optimum angle.



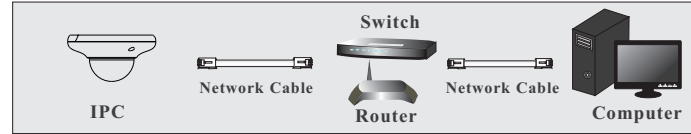
- ⑥ Replace the lower dome to the camera and make sure the light sensor can be seen from the outside. If the light sensor is hidden, please re-adjust the lens. After that, fix the lower dome with the screws.



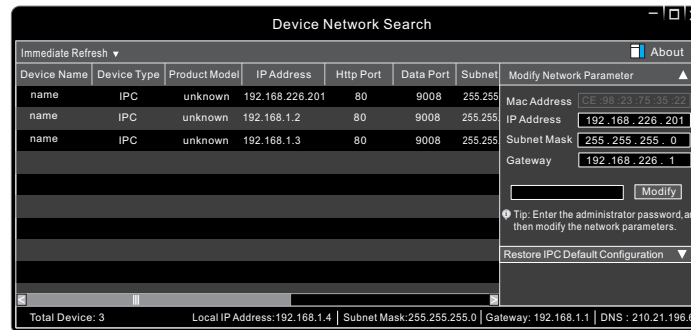
5 Network Connection

Here we take accessing IP camera via LAN for example.

● Access the camera through IP-Tool



- ① Make sure that the camera and the PC are connected via LAN.
 - ② Find the IP-Tool from the CD and then install it in the computer.
- After that, run the IP-Tool as shown below.



- ③ Double click the camera information listed in the IP-Tool to open the web browser.

The default IP address of this camera is **192.168.226.201**.

Then follow directions to download and install the plugin if prompted.

- ④ Activate and log in the camera. The default username is **admin**; the default password is **123456** or you need to self-define the password. Please operate according to the actual situation.

Tips

Transparent Dome Maintenance

Transparent dome is an optical element. As dirt, dust or fingerprints on the dome will reduce the clarity of the image, please don't touch or wipe the cover surface directly during installation and use. Please refer to the following cleaning tips to clean it.

- * If there is dust on the dome, please use a dry soft brush to gently brush it.
- * If there is water or grease on the dome, please gently wipe off the water drop or grease with a soft cloth and then use oil-free cotton cloth with neutral detergent to wipe it several times from the center outward. Finally, change the cloth to dry it.
- * If there are fingerprints on the dome, please use oil-free cotton cloth or paper soaked with neutral detergent to wipe it several times from the center outward and then dry it with a soft cloth.