

How to setup the Wireless Antenna Kit to Your Wireless Network

To connect your Wireless Antenna adaptor to your existing wireless network can be done in a couple quick steps.

STEP 1

On the back of the device, move the small switch on the bottom left from the “R” to the “W” position.

ONCE THE DEVICE IS IN THE "W" POSITION DO NOT TOGGLE THE SWITCH AGAIN OR ALL SETTINGS WILL BE LOST!

STEP 2

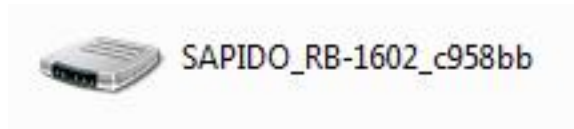
Plug the Wireless Antenna into the wall with the included power cable.

STEP 3

Connect the Wireless Antenna into your router via an open Ethernet port.

STEP 4

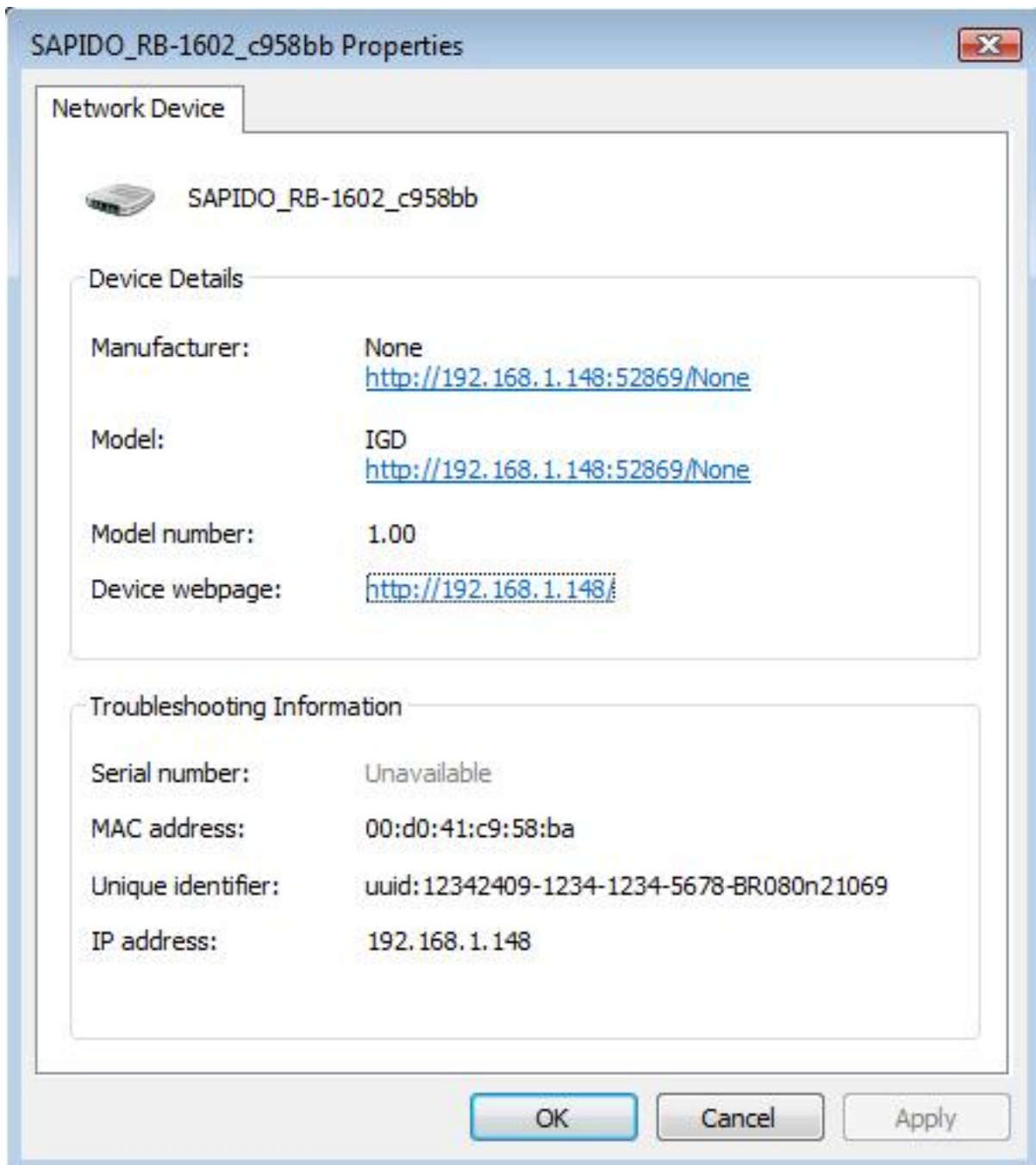
Open your Network menu on your computer and look for a device with “Sapido” in its name.



Right click on the device and go to “Properties”



Click on the “Device webpage” link displayed on that screen.



You should see the following screen:



WiFi AP

Username :

Password :

Login

STEP 5

Login with the default username: admin and password: admin

STEP 6

On the next screen, click on "One Button Setup" in the left navigation pane.

The screenshot shows the "Network Config" page of the router's web interface. On the left is a green navigation menu with a "Menu" button at the top. The menu items are: "WIFI AP" (with a sub-item "One Button Setup" highlighted in red), "IP Config", "Wireless", "System Management", "Log and Status", and "Logout". The main content area has a blue header "Network Config" and a sub-header "This page shows the current status an". Below this is a table with system information:

System
Uptime
Firmware Version
WirelessConfiguration
Mode
Band

STEP 7

This screen will allow you to select the local Wireless (WiFi) network you want to connect the Wireless Antenna to under "Wireless Site Survey Setting".

One Button Setup

This page is used to configure all of the server router function for first time.

Time Zone Select

Time Zone Select : (GMT)Greenwich Mean Time: Dublin, Edinburgh, Lisbon, London ▾

Change Password

New Password:

Device Name

Device Name: SAPIDO_RB-1602_c614

Wireless Site Survey Setting

SSID	BSSID	Channel	Type	Encrypt	Signal	Select
------	-------	---------	------	---------	--------	--------

STEP 8

Select the network you want to connect to and scroll down to “Encryption”

Encryption: WPA ▾

WPA Cipher Suite: TKIP AES

Pre-Shared Key Format: Passphrase ▾

Pre-Shared Key:

STEP 9

Select the encryption the network has, and in the fields below enter the passkey or password information needed to connect to the secured network.

STEP 10

You can now disconnect the Antenna from the router and your Wireless Antenna is ready to be a wireless access point.