

2'X2' CEILING HOUSINGS - RC200

DESCRIPTION

This low profile camera housing is designed for use in suspended ceiling applications, replacing a standard 2' x 2' ceiling tile. Its unique design allows the unit to be manually rotated 360°, and the compact size is ideal for use with a fixed, solid-state 1/2" or 1/3" camera and lens combinations.

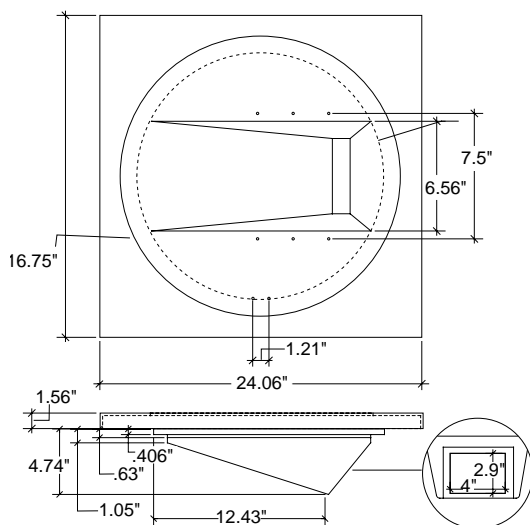


FEATURES

- Housing is manufactured from high-impact, off-white plastic
- Lightweight plastic housing requires no special ceiling support attachments
- Viewing window sonically welded to a snap-in mount
- Unit is fully adjustable for 360° positioning
- OD1 optional metal back box available for plenum applications to comply with standard building codes
- Also available as a VideoKit™ model with camera

ARCHITECTURAL/ENGINEERING SPECIFICATIONS

The housing shall be an RC200C indoor enclosure designed to replace a 2' x 2' drop ceiling tile. The housing shall be capable of 360° manual rotation without the use of secondary brackets or plates. The view panning adjustment shall be unlimited, with locking tabs provided to secure desired viewing angle. The enclosure shall be made of off-white, 94HB ABS plastic. The viewing window shall be made of clear acrylic, enclosed in a snap-in mount, and shall measure 4" x 2.9". An adjustable stainless steel camera bracket shall be included. Unit shall be available with an optional metal dust cover.



MODELS

RC200C - Indoor low profile ceiling housing that replaces 2' x 2' ceiling tile. Complete with camera bracket, off-white plastic lower body and clear window. Body manually rotates 360°.

RC201C - RC200 with metal dust cover

OPTIONS/ACCESSORIES

OD1 - RC200C metal dust cover

SHIPPING SPECIFICATIONS

Model	Unit Weight	Shipping Weight	Shipping Box Dim.
RC200	8.40 lbs	30 Grd/30 Air	7 x 28 x 28

* Shipping weights depend on box dimensions.