

Exit Devices

120/1200/1300 Series 

High Security Exit Devices

03P/08 Trim 



In or Out...we make it Easy!®

120 Series

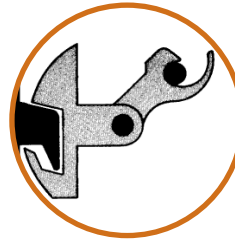
Switch Bar
(no latching)

1200 Series

High-Security Mechanical
Rim Exit Device

1300 Series

High-Security Rim Exit
Device with Electric
Latch Retraction



*Patented Interlocking
Strike and Latch*

Lever Trim 08

Key locks or unlocks
trim



Compatible with
1200/1300 Series

(RIM cylinder supplied separately)

Pull Trim 03P

Entrance by key retracting
latch bolt



Features

1200/1300 Exit Device

- cULus listed (3-hour Fire Exit Hardware)
- Fits any 3-foot wide (or smaller) door (narrowline aluminum, pre-cut stock metal or standard wood)
- Models 1200L/1300L available for 4-foot wide doors
- Available with cam lock dogging and cylinder dogging (see options)
- Model 1300 includes a 24VDC continuous-duty solenoid which provides a remote unlock feature for controlled entry. (12VDC also available)

120 Switch Bar

- Used to release electromagnetic locks (has no latch or strike)
- SPDT or two SPDT signal switches deactivate electric locks and/or activate a remote alarm when push bar is pressed.

Lever and Pull Trim

- Compatible with RCI 1200/1300 Series exit devices
- Brushed anodized aluminum or brushed anodized dark bronze finish

Model 08 Only

- Handing standard LHR (field reversible to RHR)
- Vandal-resistant (Lever is not restricted in the locked position.)
- UL certified for fire doors

High Security Exit Devices

RCI's 1200 Series exit device resolves the conflict between safety and security. Life safety codes require safe, free egress from a room, corridor or building with a minimum of effort, but this may compromise building security.

The 1200 Series exit device features a unique, patented interlocking latch and strike grip which forms a stainless steel lock completely encased within the mechanism. It's virtually impossible to pry or force open, offering maximum security – yet a gentle push on the exit bar releases the latch. Series 1300 (with electric latch retraction), has a remote unlock feature for controlled entry.

The addition of RCI's optional alarm unit creates a simple, easy-to-install traffic control system. The attractive lever trim can be used on the exterior side of the door for access.

Highlights

- Strong Protection, Fast Release
- Nonhanded
- Easy Installation
- Interlocking strike & latch design (1200/1300 Series)
- 3-Year Limited Warranty

Applications

- Use 120, 1200 or 1300 Series with any 3 or 4-foot-wide doors
- Use with all types of doors, including narrow-stile aluminum
- Any exterior door exposed to possible tampering

Options & Accessories

1200/1300 Series

1200C/1300C	Cylinder dogging
1200D/1300D	Cam lock dogging
1200F/1300F	Fire labeled exit device, no dogging
10	Alarm module (9V battery supplied)
20	12-24 VDC alarm module (remote power with battery backup; 9V battery supplied)
30	12-24 VDC alarm module (remote power only)
SS1	SPDT Signal Switch
SS2	Two SPDT Signal Switch

Trim Options

08-L	Lever Trim
08N-L	Narrow stile lever trim
08E-L	Electrified lever trim
08NE-L	Narrow stile electrified lever trim
03-P	Pull Trim

Finishes

28	Aluminum (BHMA 628)
40	Dark Duranodic (BHMA 710)

Specifications

120/1200/1300 Series

03P/08 Trim



In or Out...we make it Easy!®

NOTE: Not to scale. Specifications are subject to change without notice.

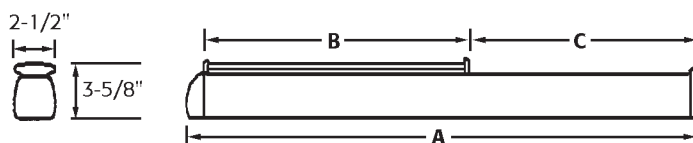
1200/1300 Series	
Signal Switches*	Activated by depressing push bar. Switches can be specified for all types of access controls. SS1 – SPDT rated 3A @ 30VDC (Inductive), SS2 – 2SPDT rated 3A @ 30VDC (Inductive), 4A @ 30VDC (Resistive)
Lock Monitor Switch	For remote alarm monitoring of latch position. Normally opened, normally closed contacts.
Push Bar Inserts	Black vinyl insert supplied. Allows inserts to be added by removing push bar end cap and sliding insert into the groove of the push bar.
Patented Interlock	Strike and latch are stainless steel, heat-treated and tempered. Tensile strength 200,000 PSI.
Alarm Modules	10 – Audible Chirp indicates low battery. 9V alkaline battery (supplied). 20 – Remotely powered field-selectable 12 to 24VDC power with 9V battery backup (battery supplied). 30 – Remotely powered field-selectable 12 to 24VDC power. 1300 Series can be unlatched remotely without sounding the alarm. All alarms include a mortise cylinder with Schlage C keyway and standard Yale cam. Specify 15/16" through 1-1/8" when alarm is to be keyed by others.
Alarm Module Current Draw	(Alarm Module 10 – 0.5 microA in Standby position; 16mA when sounding) (Alarm Module 20 – 0.5 microA in Standby position; 16mA when sounding) (Alarm Module 30 – 0.5 microA in Standby position; 16mA when sounding)
Alarm Horn Power	110db piezo horn; field-selectable continuous horn or 3 to 5-minute sound and reset; field-selectable intermittent beep or steady horn. Activated by depressing push bar when in the "Alarm On" position.
Electrified Trim Current Draw	155mA@24VDC
1300 Solenoid Current Draw	400mA@24VDC
Certification	1200/1300 Series – cULus Certified ANSI/BHMA 156.3-1994, Grade 1; cULus Listed 3-hour Fire Exit Hardware; cULus Listed Panic Hardware; 1997 STD. U.B.C. 7-2; NYC MEA 337-92M; Listed by CA State Fire Marshal; ADA Compliant

*Rating for SS1 and SS2 applies to Model 120 also.

MODEL NO.	A	B	C	WIDTH	FIELD-CUT C FOR DOOR WIDTHS
120A/1200A/1300A	34-3/8"	18"	15"	36"	22" to 35"
120D/1200C & D/1300C & D	34-5/8"	18"	15"	36"	24" to 35"
1200F/1300F	34-3/8"	18"	15"	36"	27" to 35"
L120A/L1200A/L1300A	46-3/8"	24"	21"	48"	28" to 47"
L120D/L1200C & D/L1300C & D	46-3/8"	24"	21"	48"	30" to 47"
L1200F/L1300F	46-3/8"	24"	21"	48"	39" to 47"



120/1200/1300 Series



08 Series

cULus Certified ANSI/BHMA
156.3 - 1994, Grade 1
ADA Compliant

RCI also offers a complete line of Electromagnetic Locks, Electric Strikes, Power Supplies, Switches, Keypads & Readers, Exit Devices, Systems & Door Hardware.