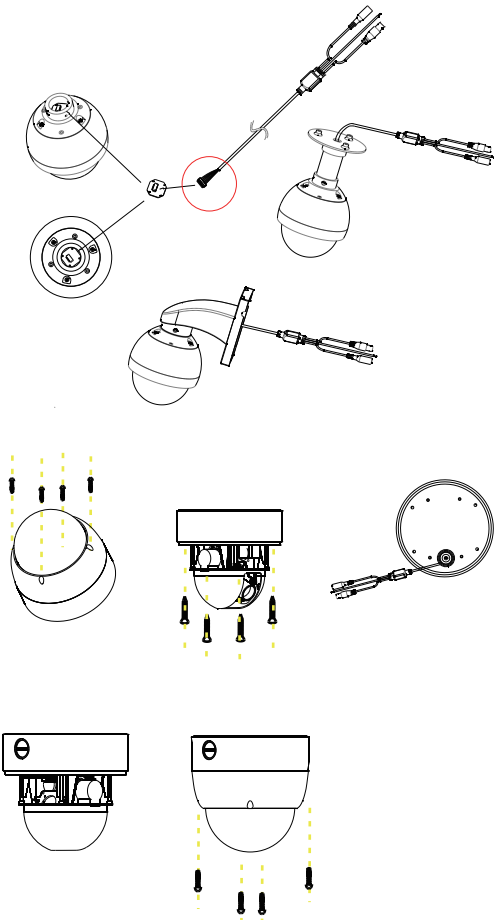
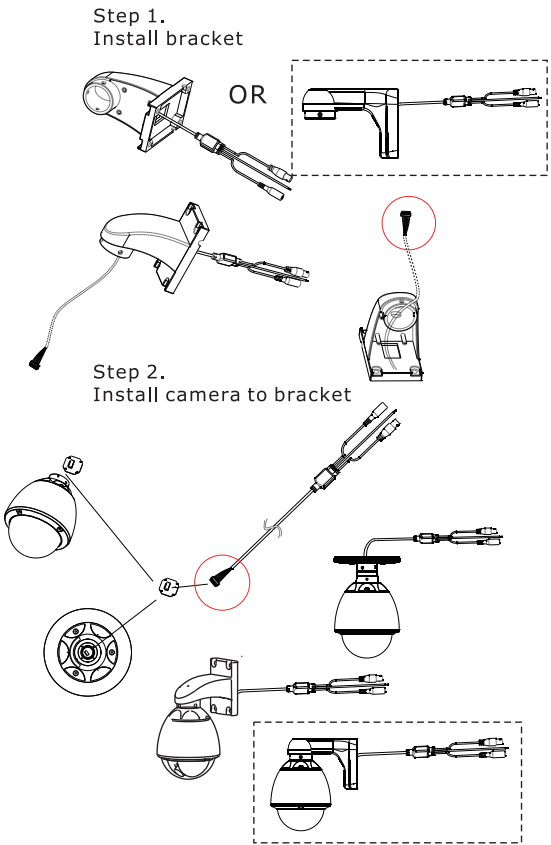
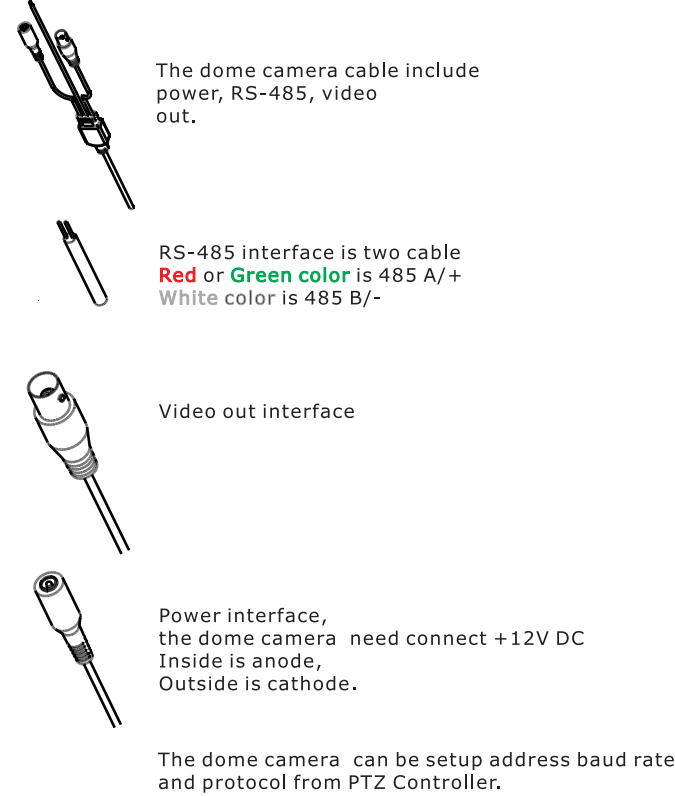


1 How to install



2 Connect Interface



4 Function List

The dome camera use preset command to achieve some extended function.  
You can use **CLEAR / SET / GOTO** preset number to do some extended function

Set Preset Point Number Command:  
Preset Number      Function  
1 -- 32 (0x20)    Set Preset Point

62(0x3E)      Set Left Limited Point  
63(0x3F)      Set Right Limited Point

76(0x4C)      Set Home Point  
77(0x4D)      Set Home Point Wait Time to 64  
78(0x4E)      Set Home Point Wait Time to 128  
79(0x4F)      Set Home Point Wait Time to 192  
80(0x50)      Set Home Point Wait Time to 255  
81(0x51)      Enable auto come back Home Point  
82(0x52)      Disable auto come back Home Point

92(0x5C)      Set Left Limited Point  
93(0x5D)      Set Right Limited Point  
94(0x5E)      Reset Original Point

240(0xF0)      Clean Setup  
241(0xF1)      Init System

242(0xF2)      Begin PATTERN Setup  
243(0xF3)      End PATTERN Setup

247(0xF7)      Start PATTERN  
248(0xF8)      Stop PATTERN

Clear Preset Point Number Command:  
Preset Number      Function  
1 -- 32 (0x20)    Clear Preset Point

62(0x3E)      Clear Left Limited Point  
63(0x3F)      Clear Right Limited Point

76(0x4C)      Clear Home Point

92(0x5C)      Clear Left Limited Point  
93(0x5D)      Clear Right Limited Point

Goto Preset Point Number Command:  
Preset Number      Function

1 -- 32 (0x20)    Goto Preset Point

34(0x22)      Goto Pan Zero point

76(0x4C)      Goto Home Point

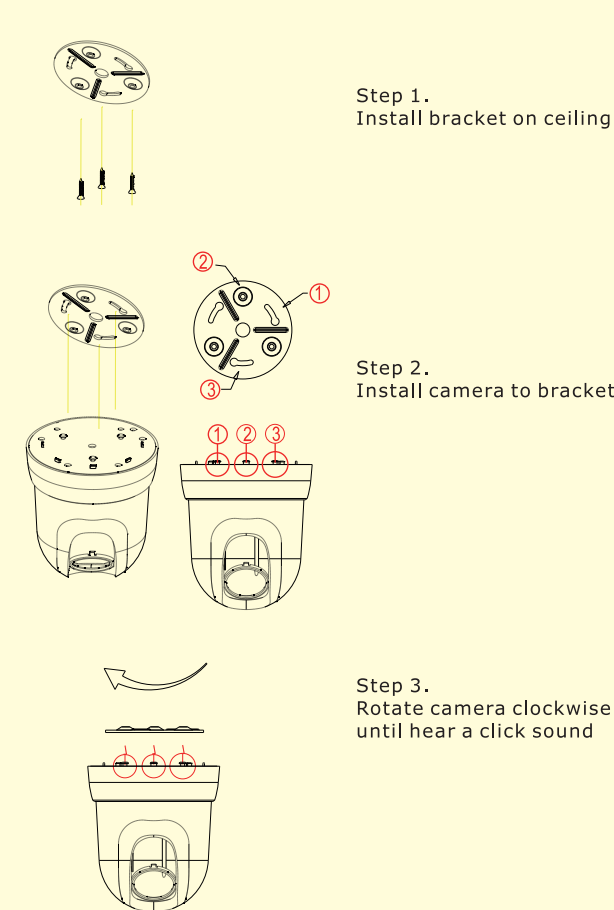
92(0x5C)      Goto Left Limited Point  
93(0x5D)      Goto Right Limited Point

99(0x63)      Start Auto Scan

Pattern function:  
You can do like this setup pattern point:  
Step 1: Input SET preset 242 begin pattern learning  
Step 2: You can send GOTO preset point command,  
camera will auto record this point as pattern point.  
For example: If you want camera tour at point 1,3,6  
You can input GOTO preset point 1, GOTO preset  
point 3, GOTO preset point 6 at this time.  
Step 3: Input SET preset 243 end pattern learning  
Step 4: Input SET preset 247 start pattern tour running,  
Step 5: Input SET preset 248 stop pattern tour.

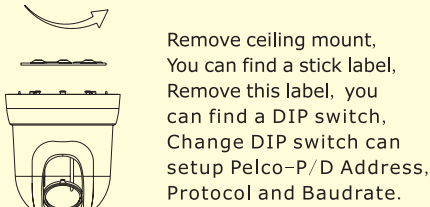
Also we support Pelco pattern command:  
Send Set Pattern Start command(00 1F 00 00)  
start pattern learning, When camera at this mode,  
You can send GOTO preset point command,  
camera will auto record this point as pattern point.  
Send Set Pattern Stop command (00 21 00 00) stop  
pattern learning,  
Send Run Pattern command(00 23 00 00) start/stop  
pattern running.

1 How to install



2 How to setup address

Step 1. Remove ceiling mount. Find DIP switch



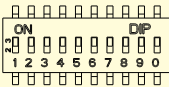
Step 2. Setup protocol  
After remove label, you can find a DIP switch, you can  
configuration address, protocol and baud rate by this DIP switch.

**DIP 1 - 6 is address**  
If address is 1, DIP 1 is ON, another 2-6 is OFF  
For Pelco-D, this is protocol address. You need setup  
same address as DVR. For Pelco-P, this is factual  
address. Protocol address is this address plus one.  
For example, If you want set protocol  
Pelco-P address 1 at DVR, you need set address 0 at this DIP  
SWITCH(DIP 1-6 is OFF),  
DIP 7-8 is baud rate    1200    2400    4800    9600

DIP 7 ON    OFF    ON    OFF  
DIP 8 OFF    OFF    ON    ON

DIP 9 is protocol ON is Pelco-P, OFF is Pelco-D

DIP 0 is 485 terminal resistance ON is connect 120ohm resistance.



3 How to setup address

The dome camera can be setup address baudrate and protocol  
by two ways, one is setup by DIP SWITCH, another is setup  
from PTZ Controller.

How to setup Protocol and Baudrate by DIP SWITCH  
Open cover, you can find a DIP switch, you can configuration  
address, protocol and baud rate by this DIP switch.  
DIP 1 - 6 is address.

If address is 1, DIP 1 is ON, another 2-6 is OFF  
For Pelco-D, this is protocol address. You need setup same address as DVR.  
For Pelco-P, this is factual address. Protocol address is  
this address plus one, For example, If you want set protocol  
Pelco-P address 1 at DVR, you need set address 0 at this DIP  
SWITCH(DIP 1-6 is OFF),  
DIP 7, 8 is baud rate,    DIP7    DIP8

9600bps    OFF    ON  
4800bps    ON    ON  
2400bps    OFF    OFF  
1200bps    ON    OFF

DIP 9 is protocol, ON is Pelco-P, OFF is Pelco-D

DIP 0 is auto config.

ON is config by DIP switch

OFF is config by RS-485.

