

## Key Features

- Ruggedized metal PowerDome housing delivers performance in extreme conditions, including wet, corrosive, caustic & marine
- IP68 for total protection against dust ingress, periods of immersion under pressure and corrosion
- Toughest, most rugged PTZ camera available
- Most comprehensive viewing range of any speed dome, including above the camera and below the camera
- Flat glass window with external wiper and internal heater
- Can be mounted right-side up or upside down on walls, surfaces, ceilings or corner
- Available in stainless steel or aluminum.

## Product Description

Featuring an innovative Metal PowerDome design, Moondance is a ruggedized PTZ camera designed for extreme weather environments and absolute PTZ performance.

Constructed of CNC-milled 6mm thick aluminum or stainless steel, Moondance is IP68 sealed for total protection against dust ingress and periods of immersion under pressure, providing absolute performance through hurricane conditions. A small, flat optical window, external wiper and internal heater make Moondance ideal for the harshest outdoor environments.

Moondance's robust Metal PowerDome design makes it the toughest, most versatile PTZ camera available. Twin support arms secure the machined metal ball head, allowing the most versatile pan-tilt operation of any speed dome. Moondance is twice as versatile as conventional speed domes, capturing surveillance images from both above and below the camera. Models with 45° Yoke also enable views from directly below the camera itself, eliminating the blind spots typical to conventional PTZ cameras. With the capability to be mounted upside-down or right-side-up, Moondance's unique machine metal ball design enables surface, ceiling or wall mounting.

Moondance™ features an LXR CCD zoom module that delivers 18x optical, 12x digital zoom, exceptional performance in low light and outstanding night vision performance under infrared. Mechanical filter technology ensures vivid daytime color and sharp focus under infrared.

Incorporating closed loop electronics, Moondance features outstanding speed control which enables smooth, precise pan and tilt action for unparalleled control, even at high zoom. Additionally, precision-engineered resolver technology enables accuracy of better than 0.08° for Moondance's 64 configurable presets.

Moondance™ includes commissioning software, is available with various protocols including Pelco and can be combined with Extreme's IR illuminators for outstanding night vision performance.

## Product Image



**14"  
Height**

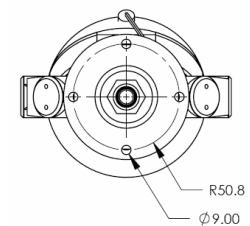
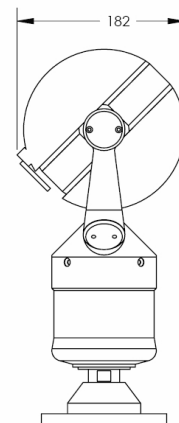
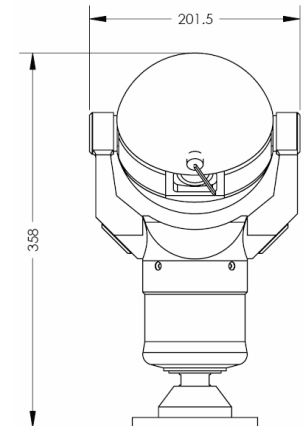
Featuring metal PowerDome design, Moondance is the toughest, most rugged PTZ camera available. Sealed for IP68 protection against extreme weather.

## Applications

- Marine environments
- Defense
- Commercial buildings
- Transportation
- Government sites
- Airports
- Flagpoles
- Corrosive / caustic environments
- Ports
- Homeland Security
- Mobile police vans
- Architectural environments
- Wash down facilities

## Specifications

	Moondance Metal PowerDome PTZ Camera
Image Sensor	1/4" LXR color / monochrome CCD
Filter	Automatic mechanical IR cut filter
Resolution	470 TVL NTSC standard (PAL available)
Effective Pixels	768 x 494 NTSC standard (PAL available)
Minimum Illumination	0.7 Lux @ F1.4 (1/60s)   0.05 Lux @ F1.4 (1/4s)
Zoom	18x optical   12x digital   216x total
Lens Focal Length	4.1mm to 73.8mm
Angle of View	48° wide   2.7° telephoto
Focus system	Auto or manual focus
Drive Unit	Integral pan / tilt motor drive
Pan	360° continuous pan
Tilt	320°
Pan-Tilt Speed	0.75° to 90° per second
Speed Control	Closed loop electronics
Repeatability	Better than 0.08° pan / tilt preset accuracy
Presets	64 configurable presets
Communication	RS485 / RS422
Control Protocol	Pelco P/D standard. Vidimech Vertech available.
Window Wiper	External window wiper included as standard
Heater	Included as standard
Operational Temp.	-30°C to +50°C   -22°F to 122°F
Configuration	90° straight standard. 45° yoke available.
Construction	Aluminum or stainless steel PowerDome design, sealed to IP68
Color	Aluminum: black standard, grey available. Stainless steel: natural finish.
Mounting	Basic surface bracket included. Select additional from accessories.
Power / Video Cabling	Select from 2, 10 or 25 meters (6.5, 32 or 82 feet)
Power Supply	Select from 240VAC, 120VAC, 24V AC/DC or 12VDC input
Power Consumption	25.2W max.
Dimensions (D x H x W)	Ø165mm x 360mm x 205mm   Ø6.5" x 14.2" x 8.1"
Weight	Aluminum: 10lbs / 4.5kg   Stainless steel: 39.6lbs / 18kg
Environmental	NEMA 4   IP68



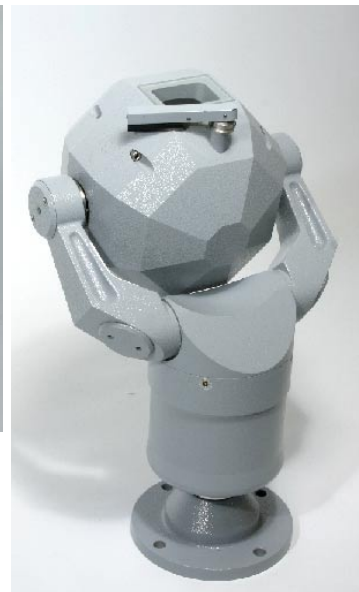
## Product Images



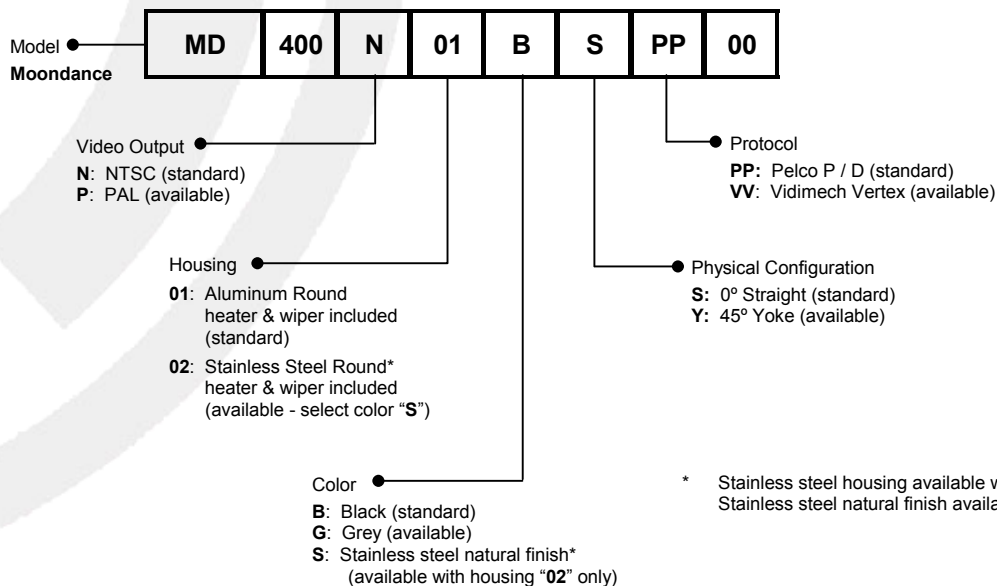
Featuring metal PowerDome design, Moondance also is available in stainless steel construction for performance in extreme wet and corrosive conditions.



Moondance comes in an innovative 45° Yoke option that enables the camera to capture images from directly above and directly below, as illustrated here.



## Part Numbers



## Accessories

Select cabling (required), power supply (required) and mounting bracket (required).

Part Number	Description
MDCL-02	Cabling, 2 meters
MDCL-10	Cabling, 10 meters
MDCL-25	Cabling, 25 meters
MDPS-115	Power supply, 115 VAC input
MDPS-240	Power supply, 240 VAC input
MDPS-024	Power supply, 24V AC/DC input
MDPS-012	Power supply, 12 VDC input
MDMB-BAS	Mounting bracket, deep conduit base, black
MDMB-BAS-1	Mounting bracket, deep conduit base, grey
MDMB-BAS-2	Mounting bracket, deep conduit base, stainless
MDMB-WAL	Mounting bracket, wall, black
MDMB-WAL-1	Mounting bracket, wall, grey
MDMB-WAL-2	Mounting bracket, wall, stainless
MDMB-COR	Mounting bracket, corner, black
MDMB-COR-1	Mounting bracket, corner, grey
MDMB-COR-2	Mounting bracket, corner, stainless



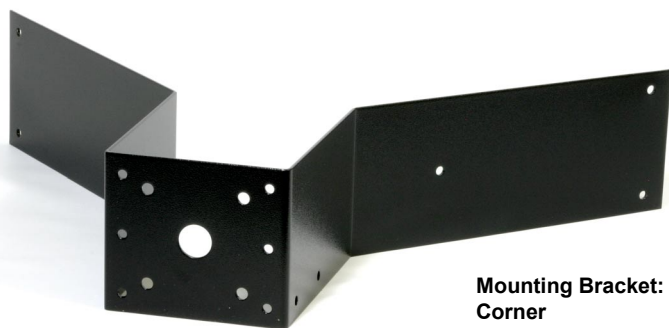
**Cabling**



**Power Supply**



**Mounting Bracket:  
Wall**



**Mounting Bracket:  
Corner**



**Mounting Bracket:  
Deep Conduit Base**