

Arecont Vision SurroundVideo® AV8360 Network Camera

AV8360

- 8 Mpixel 360° IP-camera sensitive to 0.2 lux @ F2.0
- Panoramic Camera with Four 2 Megapixel Image Sensors

360°

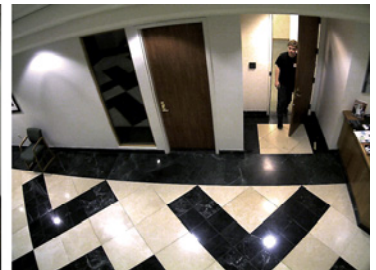
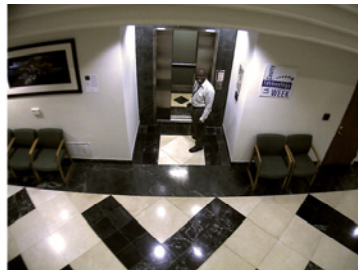


8 Mpix



The AV8360 camera offers panoramic views and cinema compatible high frame rates to allow real time high definition digital video surveillance with 24 times the resolution of the best analog surveillance cameras

- **GREAT HIGH RESOLUTION & FULL MOTION:** AV8360 network camera delivers full motion progressive scan 1600 x 1200 video at 22 fps featuring massively-parallel MegaVideo® image processing architecture capable of sustaining over 6 billion operations per second.
- **GREAT COST EFFICIENCY:** High resolution and crystal clear imagery allows the AV8360 to substitute up to 24 analog cameras; thereby reducing the total cost of installation. No need to supply a separate power source since the power can be drawn from a low cost Power-over-Ethernet switch.
- **GREAT FORENSIC ZOOMING:** AV8360 surveillance system has the ability to zoom after the event from high resolutions digital archives and the simultaneous viewing of zoomed and full field of view images.



Day or Night MegaVideo® Technology Delivers Full Motion HDTV Resolution at NTSC Price



Arecont Vision

2400 Lincoln Avenue, Altadena, CA 91001, USA
Toll Free (877) CAMERA-8 (626) 296-6453

AV8360 CAMERA SPECIFICATION

Arecont Vision SurroundVideo® AV8360 Network Camera

Imaging

- Four 2 Megapixel CMOS Image Sensors
- 1600(H) x 1200(V) pixel array each sensor
- 1/2" optical format
- 4.2 μ m pixel pitch
- Bayer mosaic RGB filter
- Sensitivity 0.2 lux @ F2.0
- Dynamic Range 60 dB
- Maximum SNR 45 dB

Data Transmission

- Data Rate up to 55Mbps
- Video Frame Rate (all four channels in parallel):
 - 88 fps @ 800 x 600
 - 22 fps @ 1600 x 1200
- Motion JPEG with 20 levels of quality
- TFTP & HTTP Image Transmission Protocols
- 100Base-T Ethernet Network Interface

Programmability (independent for each channel)

- Auto Exposure (AE) and Gain Control (AGC) >120dB
- Auto Backlight Compensation
- Auto Multi-Matrix White Balance
- 50/60Hz selectable Flicker Control
- Electronic Pan, Tilt, Zoom (PTZ)
- Electronic Image Rotation - up-side down image turn
- Resolution windowing down to 32x32 pixels window
- Programmable Motion Blurring Control for Low-Light Mode
- Programmable Resolution, Brightness, Saturation, Gamma, Sharpness, Tint
- Pictures-In-Picture: Simultaneous delivery of full field of view and zoomed images
- On-camera Motion Detection with 64 detection zones per channel

Electrical

- Power over Ethernet (POE) or DC Input
- Compatible with IEEE 802.3af POE equipment
- 9V – 12VDC (2.1mm x 5.5mm, center positive)
- Power Consumption 6 Watts maximum

Regulatory Approvals

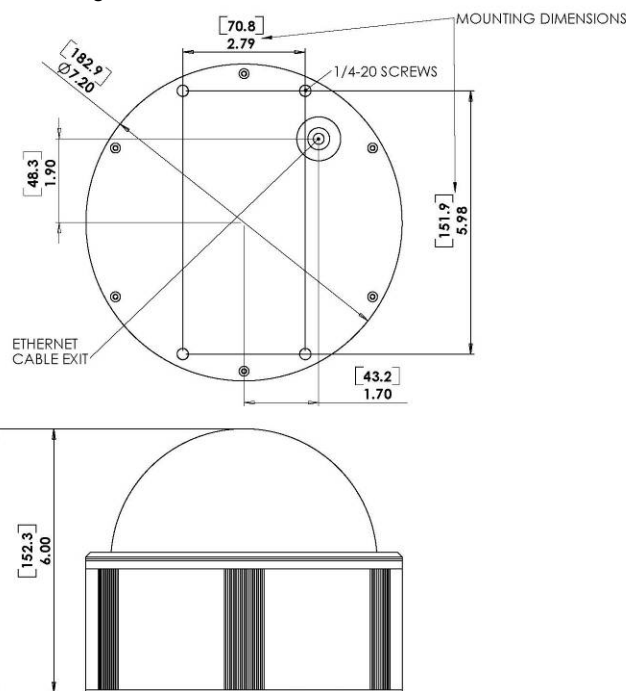
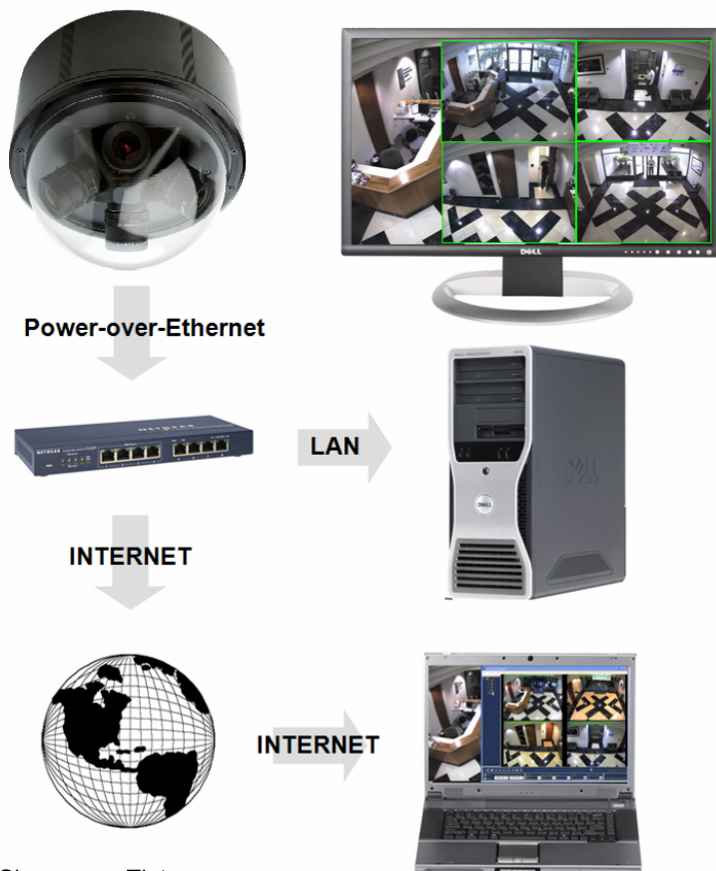
- FCC Part 15, Class B
- CE compliant

Mechanical

- 4lb or 1800 grams
- C/CS Lens Mount

Environmental

- Operating Temperature 0°C to +50°C
- Storage Temperature -20°C to +60°C
- Humidity 0% to 90% (non condensing)



Arecont Vision reserves the right to change products or specifications without notice