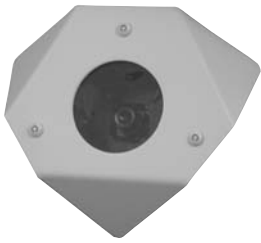


VANDAL RESISTANT CAMERAS - WS6 Corner Mount



CERTIFICATIONS



DESCRIPTION

Designed for indoor applications, the Warrior 6 offers discreet surveillance in a compact package. A 12-gauge steel front cover and polycarbonate window with a scratch resistant coating protect camera equipment, while the 16-gauge steel back box allows wiring access through either the top, side or bottom. A day/night camera is also available.

FEATURES

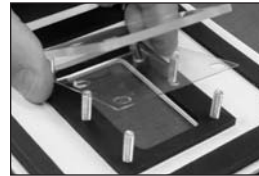
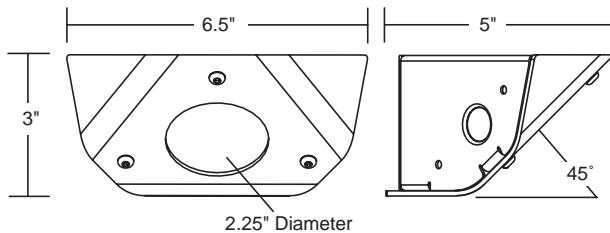
- 12-gauge steel front plate, powder coated
- Optional stainless steel or brass finished face plate
- Adjustable camera bracket,
- Window Guard™ paint shield
- Conduit knockouts in the top, side, and bottom

CAMERA/LENS CHOICES

- Hi-res b/w
- Hi res color
- Hi-Res day/night
- 3.6mm and 2.5mm fixed lens included

ARCHITECTURAL/ENGINEERING SPECIFICATIONS

The Warrior 6 housing shall include a 16-gauge steel backbox with 3/ 4" conduit knockouts. The front cover shall be 12-gauge steel, powder coated in off-white. There is an optional stainless steel or brass front plate. The viewing window shall be constructed of 1/8" polycarbonate and shall include a scratch resistant coating and paint shield for high vandalism installations. A metal camera mounting bracket shall be included, allowing from 10° to 50° viewing angle. Available with hi-res black and white, hi-res color, or hi-res day/night cameras. A factory installed NVT twisted pair module shall be available as an option.



Videolarm's exclusive Window Guard Paint Shield™ helps protect housing windows from vandals using spray paint or paintball guns.

MECHANICAL SPECIFICATIONS

Cable Entry	1/2" conduits on sides of back box
Pan/Tilt	Manual; 15° tilt above and below horizon

CONSTRUCTION	12-gauge steel faceplate 16-gauge steel backbox 1/8" polycarbonate viewing window
FINISH	Off-white powder coat, brass, or stainless steel

DIMENSIONS	
Housing	3" (H) x 6.5" (W) x 5" (D)
Window	2.25" diameter

ELECTRICAL SPECIFICATIONS

Input Voltage	12 - 28 VDC or 15 - 28 VAC Must be a regulated power supply
Current Draw	12 VDC - 350mA; 24 VAC - 202mA
Power Requirements	
Camera	12 VDC - 4.2W; 24 VAC - 4.8W
Video Connector	BNC

ENVIRONMENTAL SPECIFICATIONS

Temperature Range	0° to 110° F
-------------------	--------------

CAMERA SPECIFICATIONS - see page 29

FACTORY INSTALLED OPTIONS



- NVT twisted pair transmitter module (customer must purchase video receiver from NVT)

ADDITIONAL OPTIONS

- WSLP68 - Lens combination pack (6 mm, 8 mm)
- PS12 - 12VDC power supply
- WS3PS - Additional paint shields

SHIPPING SPECIFICATIONS

Model	Unit Weight	Shipping Weight	Shipping Box Dim.
WS6	3 lbs	4 lbs	9 x 9 x 8

* Shipping weights depend on box dimensions.

VANDAL RESISTANT CAMERAS - Camera and Lens Specifications

WARRIOR CAMERA SPECIFICATIONS

	Hi-Resolution B/W Camera	Hi-Resolution Color Camera	Hi-Resolution Day and Night Camera	Pan/Tilt/Zoom Hi-Res Color Camera ⁴
Signal System	EIA or CCIR	NTSC or PAL	NTSC or PAL	NTSC or PAL
Imager	1/3" CCD	1/4" CCD	1/4" CCD	1/3" CCD
Scanning System	2:1 Interlaced	2:1 Interlaced	2:1 Interlaced	2:1 Interlaced
Synchronizing System	12 VDC internal	Internal	Internal	12 VDC internal
Horizontal Resolution	570 TV Lines	480 TV Lines	480 TV Lines	480 TV Lines
Signal-to-Noise Ratio	More than 48 dB	More than 50dB	More than 50dB	More than 48 dB
Minimum Illumination	0.08 Lux (F1.2)	0.75 Lux (F1.2)	Color - 0.75 Lux (F1.2) B/W - 0.05 Lux (F1.2) Switches to B/W at 0.6 Lux	0.4 Lux (F1.2)
Video Output	1Vp-p 75 ohm composite	1Vp-p 75 ohm	1Vp-p 75 ohm	1Vp-p 75 ohm composite
Gain Control	Auto	N/A	N/A	Selectable, RS232C controllable
Electronic Iris	Auto	ON/OFF selectable dip switch	ON/OFF selectable dip switch	
Auto Iris Control	DC Drive Iris Control w/adjustable level	DC Drive Iris Control w/adjustable level	DC Drive Iris Control w/adjustable level	N/A
Switchable Shutter Speed	1/50 1/60 - 1/100,000 sec.	N/A	1/60 sec. Fixed (flickerless off) 1/100 sec. Fixed (flickerless on)	Selectable, RS232C controllable
White Balance	N/A	Auto Tracking White Balance	Auto Tracking White Balance	Selectable, RS232C controllable
Flickerless	N/A	ON/OFF selectable dip switch	ON/OFF selectable dip switch	ON/OFF selectable dip switch
Backlight Compensation	Auto	ON/OFF selectable dip switch	ON/OFF selectable dip switch	Selectable, RS232C controllable
Lenses	2.5,3.6,6.8,12,16mm Fixed ³ 4-8mm Fixed Iris Varifocal ¹ 3.5-8mm Auto-Iris Varifocal ^{1,2}	2.5,3.6,6.8,12,16mm Fixed ³ 4-9mm Auto-Iris Varifocal ^{1,2}	4-9mm Auto-Iris Varifocal ^{1,2}	2.5,3.6,6.8,12,16mm Fixed 3x Digital Zoom

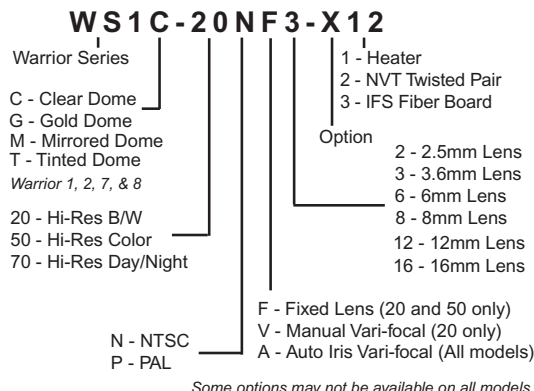
1 - Not available on Warrior 5 and 6 2- Not available on Warrior Pan/Tilt 3 - Warrior 5 and 6 2.5mm and 3.6mm only 4 - Warrior 1, 7, and 8 only

WARRIOR LENS SPECIFICATIONS

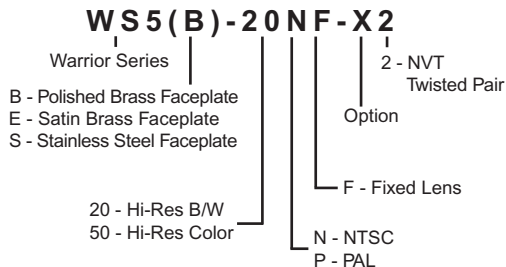
FIXED LENSES						
Focal Length	2.5mm	3.6mm	6mm	8mm	12mm	16mm
Format Size	1/3"	1/3"	1/3"	1/3"	1/3"	1/3"
Relative Aperture (F)	2.0	2.0	2.0	2.0	2.0	2.0

VARIFOCA LENSES		
Focal Length	4-8mm fixed	4-9mm auto iris
Format Size	1/3"	1/3"
Relative Aperture (F)	2 - 2.6	1.6 - 2.4

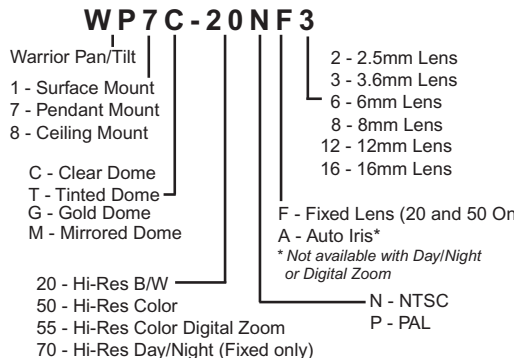
WARRIOR 1-4, 7-8 MODEL CHART



WARRIOR 5 AND 6 MODEL CHART



WARRIOR PAN/TILT MODEL CHART



Product specifications are subject to change without notice.

2525 Park Central Blvd • Decatur GA 30035 • 770-987-7550 • www.videolarm.com • info@videolarm.com

