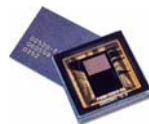


IntelliPix WIPX-520-C DPS Color Camera

1/3-INCH DPS SECURITY CAMERA WITH ULTRA-WIDE DYNAMIC RANGE AND IR CUT FILTER

Product Features

- Fully Digital DPS Image Processing
Every Pixel is a Camera
Advanced Noise Reduction
- Multi-Sampling
Each pixel is sampled up to 128 times per video frame
- Ultra-Wide Dynamic Range
102dB typical, 120dB max
Eliminates Vertical Smear
Dramatically reduces Blooming
- Higher Resolution
520 TVL Horizontal
460 TVL Vertical
- IR Cut Filter
- 0.5 Lux F1.2 (color); 0.08 Lux (slow shutter)
- Auto Iris (DC or Video)
- Automatic Gain Control (AGC)
- Optimum Exposure Modes



Lens sold separately

IntelliPIX is a new line of CCTV cameras from Intellicam based on revolutionary Digital Pixel System (DPS) technology. DPS is a fully digital imaging system providing superior image quality and an ultra-wide dynamic range well beyond typical WDR cameras on the market today.

FULLY DIGITAL - IntelliPIX cameras are based on the only fully digital imaging system. The DPS sensor outputs a digital light measurement for each picture element (pixel). With traditional CCD and CMOS sensors, the pixel outputs analog light measurements.

EVERY PIXEL IS A CAMERA - Because DPS sensors are fully digital, every pixel is a camera. That is, each pixel can respond independently to the variations of light reaching the sensor, resulting in a picture with ultra-wide dynamic range.

MULTI-SAMPLING - Instead of reading each pixel only once (like CCDs) IntelliPIX cameras read each pixel up to 128 times per frame to get much more accurate information about the amount of light hitting each pixel. Multi-sampling enables Ultra-Wide Dynamic Range. The result is truer natural colors and superior image quality. IntelliPIX cameras will capture shadows and highlights at the same time.

HIGHER RESOLUTION - The horizontal resolution is 520 TVL. With IntelliPIX we also specify the vertical resolution at 460 TVL. Typical CCD sensors use line scanning, which results in a vertical resolution of approximately 1/2 horizontal resolution. The bottom line is IntelliPIX cameras have higher resolution than most CCTV cameras on the market.

NO VERTICAL SMEAR and NO BLOOMING - Vertical smear is a unique phenomenon on CCDs when too much charge is absorbed by certain pixels causing the light to overflow into the read-out column (vertically). This appears as visible vertical smear in the image. Blooming also occurs when too much light hits a pixel and saturates it (the pixel can't be reset fast enough), resulting in light overflowing into adjacent pixels. The overflow occurs in all directions around the saturated pixel causing a bloom (also known as a halo).

INSTALL IT AND FORGET IT - With the Ultra-Wide Dynamic Range (120dB) of the fully digital DPS imaging system, the default settings work quite well in most applications, making installation very easy. More important is the performance over time as lighting conditions change. Again, with the Ultra-Wide Dynamic Range, IntelliPIX cameras perform very well even as environmental lighting changes. This ensures that installers and integrators can stop worrying about installed cameras and focus on the next project.

TECHNICAL SPECIFICATIONS

GENERAL

Sensor Type	1/3-inch DPS
Effective Pixels	720 (H) x 540 (V)
Horizontal Resolution	520 TV Lines
Vertical Resolution	460 TV Lines
Minimum Illumination	0.08 lux F1.2 (Slow Shutter)
Dynamic Range	102dB Typical; 120 dB maximum
S/N Ration	Luminance > 48dB, F5.6 @ 2000 lux
Sync mode	INT Line Lock 57.75 Hz to 62.25 Hz PAL Line Lock, 48 Hz to 52 Hz
Auto Iris	DC/Video
Day/Night Function	IR Cut Filter
Video Signal System	NTSC/PAL
Video Capture	60 interlaced fields/second 30 progressive frames/second
Composite Video Output	1.0Vp-p(Sync, Negative), 75 ohms
Video Encoder	Differential Phase: +/- 0.5° Differential Gain: +/-0.5% Chroma-Luminance Delay:<40 ns Signal-to-Noise: >48dB, weighted Chroma Phase Jitter (no gunlock): <1° Chroma Oscillator Frequency: 27MHz External trigger for Day/Night mode (cable included)
GPIO	
Control	On Screen Display (OSD)

ELECTRICAL

Power Requirements	Regulated 12V DC / 24V AC
Power Consumption	Usual Operation: 4.5 W (Max)
Power Connector	2.1 x 5.5, center positive (with pigtail)
Video Connector	BNC

MECHANICAL

Lens Type	C & CS Mount Lenses Accepted
-----------	------------------------------

ENVIRONMENTAL

Operating Temperature	-14° to 122°F (-10° to 50°C)
Storage Temperature	-86° to 176°F (-30° to 80°C)
Operating Humidity	95% RH Max.

PHYSICAL

Dimensions	62(W) x 60(H) x 121(L) mm
Weight	0.5 kg (1.1 lb)
Shipping Weight	0.62 kg (1.37 lb)

RECOMMENDED POWER SUPPLIES

DSA	Power for one camera, 12V DC, 1.0A
DPS-12D	Multi-output, 9ch, 12V DC 800mA
HPS-12D16	Multi-output, 16ch, 12V DC 800mA
PS-4AC	24V AC, 4 Output, 3.75 A, Regulated AC Power Supply
DPS-24A	24V AC, 9 Output, 4 A, Regulated AC Power Supply

OPTIONAL ACCESSORIES

TS-801	15 in. Outdoor Housing
TS-801HB	15 in. Outdoor Housing with Heater & Blower
MCON	Male Pigtail Connector – 2.1mm x 5.5mm male connection with 2 tinned wires