



## VZ-16HDVR ADVANTAGES:

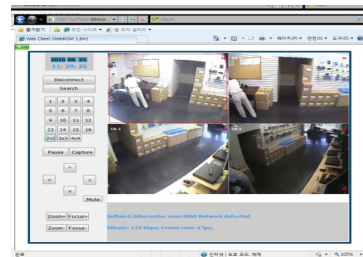
- H.264 Video compression records
- HD resolution recording at up to 1280x720/1920x1080
- 1080p HDMI output & simultaneous VGA output
- QUADPLEX: Simultaneous live or playback while still continuing to record, network transfer, and backup
- Remote Setup and Remote Upgrade
- Easy CMS Software for Windows computers
- Email Notifications(Image or AVI file attachment)
- NTP(Network Time Protocol)
- Synchronized audio for court evidence
- Remote Search for CMS or Cell Phone

MODEL #	VZ-16HDVR
<b>VIDEO</b>	
Input	16Ch HD-SDI(720p 25/30/50/60, 1080p 25/30, 1080i 50/60)
Output - Main Monitor	HDMI(Max. 1080)
Output - Sub Monitor	VGA(Max. 1080)
<b>AUDIO</b>	
Input	16Ch Line Input
Output	1Ch Line and HDMI Output
Audio Codec	G.711
<b>ALARM</b>	
Sensor Input	16Ch,NC/NO Selectable
Alarm Out	4Ch out by sensor, Motion and Video loss
<b>OPERATION</b>	
Pentaplex	Live/Record/Playback/Backup/Network
<b>RECORDING</b>	
Compression	H.264
Resolution	720p 192fps / 1080p 80fps
Recording Quality Grade	5 Levels
Recording Mode	Continuous, Schedule, Motion, Sensor, Manual
Motion Detection	Motion detection setup by Grid
Pre Recording	Min. 15 seconds and Max. 20 minutes
Post Recording	Min. 10 seconds and Max. 60 seconds
<b>DISPLAY</b>	
Frame Rate	Realtime
<b>STORAGE</b>	
HDD - Interface	Serial ATA I
- Capacity of 1 HDD	2TB
- Internal HDD Number	2EA (4EA W/O DVD-RW)
e-SATA	1
Backup - USB Flash drive	Video & Still Image
- USB External HDD	Video & Still Image
- Network	Video & Still Image
USB Port	2 (Front 1, Rear 1)
<b>SERIAL</b>	
PTZ Control	RS-485
Termination	2
<b>NETWORK</b>	
Dynamic DNS	Yes
Network Interface	10/100/1000 base-TX Ethernet (RJ-45)
Network Streaming	640x360 & 320x180 x 240fps
Web viewer (1:1)	Live, Search, Backup, PTZF, Remote Setup, Remote Upgrade, Two Way Audio
3G Mobile Viewer (1:1)	Live, Search, PTZF, Two Way Audio
MAC Viewer (1:1)	Live, Search, PTZF, Two Way Audio
Multi-sites Monitoring SW (1:n)	Live, Search, Backup, PTZF, Remote Setup, Remote Upgrade, Two Way Audio
<b>GENERAL</b>	
Power	AC 100~120V / 200~240V, 50/60Hz, 280W
Allowable operation temperature	5°C - 40°C
Allowable operation humidity	0 - 90 %
Outline Dimension	17.00" x 16.92" x 3.86"
Net Weight(Gross Weight)	15 Lbs (19.8 Lbs)



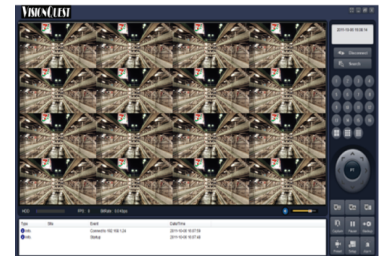
## CMS (Up to 16 DVRs)

- ☐ Live
- ☐ Local PC Recording
- ☐ Bi -Directional Audio
- ☐ Remote Alarm Control
- ☐ Camera control
- ☐ Playback
- ☐ Backup
- ☐ Remote Setup
- ☐ Remote Upgrade



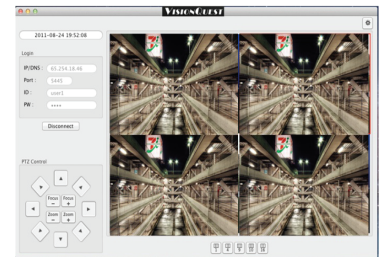
## Web Viewer (1:1)

- ☐ Live
- ☐ Camera control
- ☐ Playback
- ☐ Backup
- ☐ Remote Setup
- ☐ Remote Upgrade



## Network SW (1:1)

- ☐ Live
- ☐ Local PC Recording
- ☐ Bi -Directional Audio
- ☐ Remote Alarm Control
- ☐ Camera control
- ☐ Playback
- ☐ Backup
- ☐ Remote Setup
- ☐ Remote Upgrade



## Mac Viewer

- ☐ Live
- ☐ Camera control
- ☐ Playback

## Contact ViewZ

- Address: 1220 N.Kraemer Blvd, Anaheim, CA, 92806
- Phone: (714)630-3380, Fax: (714)630-2335
- Sales: sales@viewzusa.com
- Specifications subject to change without notice.