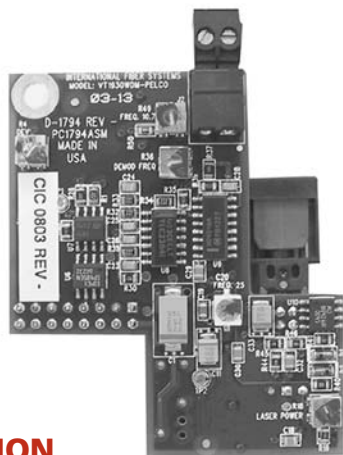




PRODUCT SPECIFICATION VIDEO WITH PTZ DATA

VT1900WDM-PELCO SERIES



DESCRIPTION

The VT1900WDM-Pelco series video transmitter and data transceiver module is designed for use in the Spectra III or Spectra IV camera system. This module allows the dome camera to be connected directly to optical fiber, providing a fully integrated solution. This unit mounts directly into the dome's enclosure, replacing the traditional power, data and coaxial cable connection. The IFS VT1900WDM-Pelco series allows for the simultaneous transmission of Video and PTZ Data over one multimode or singlemode optical fiber. Now, an added feature built into the VT1900WDM-Pelco series is a logic signal input allowing an additional device such as a dome tamper switch, low pressure indicator or an event alarm, to be added and its signal transmitted back to the monitoring location.

The optical output of the dome is compatible with the standard IFS VR1900WDM series receiver, and is designed for quick and easy installation into the Spectra III or Spectra IV system utilizing one singlemode optical fiber. In addition, the VT1900WDM-Pelco series transmitter is designed to be an integral part of the Spectra III or Spectra IV system, there are no external electrical connections or additional hardware at the camera site.

FEATURES

- FM Video Transmission
- NTSC, PAL Compatible
- Supports RS-422 Data Interface
- Transparent to Data Encoding
- Full Range Automatic Gain Control (AGC)
- No External Power Supply Required
- No In-field Electrical or Optical Adjustments Required
- Integrated WDM for Greater Product Reliability
- Distances up to 43 miles (69 km) without Repeaters
- Available in FiberPak™
- Comprehensive Lifetime Warranty



Available at: **www.ifs.com**

- A & E Specifications, (CSI)
- AutoCAD Drawings
- Operation Manuals
- Technical Bulletins

ORDERING INFORMATION

	PART NUMBER	DESCRIPTION	FIBERS REQUIRED	OPTICAL PWR BUDGET	MAX. DISTANCE*
MULTIMODE 62.5/125µm	VT1920WDM-Pelco	Video Transmitter/Data Receiver (1310/1550 nm laser)	1	15 dB	6.2 miles (10 km)
	VR1920WDM	Video Receiver/Data Transmitter (1550/1310 nm laser)			
SINGLEMODE 9/125µm	VT1930WDM-Pelco	Video Transmitter/Data Receiver (1310/1550 nm laser)	1	23 dB	43 miles (69 km)
	VR1930WDM	Video Receiver/Data Transmitter (1550/1310 nm laser)			

* Optical transmission distance is limited to optical loss of the fiber and any additional loss introduced by connectors, splices and patch panels. Distance can also be limited by fiber bandwidth. ** For 50/125 Fiber, subtract 4 dB from Optical Power Budget.

International Fiber Systems, Incorporated ■ DESIGN CENTER (888) 999-9IFS or (203) 426-1180

FAX (203) 426-3326 ■ sales@ifs.com

Europe, Middle East, Africa TEL +44 113 238 1668 ■ Asia Pacific TEL +65 6235 2661 ■ Latin America TEL (512) 477-8787



TECHNICAL SPECIFICATION VIDEO WITH PTZ DATA

VT1900WDM-PELCO SERIES

SPECIFICATIONS

VIDEO

Video Input:	1 volt pk-pk (75 ohms)
Bandwidth:	5 Hz - 10 MHz*
Differential Gain:	<5%
Differential Phase:	<5°
Tilt:	<1%
Signal-to-Noise Ratio (SNR):	> 55 dB @ 10 dB ATTN.

DATA

Data Interface:	RS-422
-----------------	--------

WAVELENGTH

1310/1550 nm, Multimode
1310/1550 nm, Singlemode

NUMBER OF FIBERS

VT1930WDM-Pelco:	1
VR1930WDM:	1

CONNECTORS

Optical:	ST
----------	----

ELECTRICAL & MECHANICAL

Power:	
VT1930WDM-Pelco:	12VDC @ 90mA
VR1930WDM:	12VDC
Circuit Board:	Meets IPC Standard
Shipping Weight:	< 1/2 lb./23 kg

ENVIRONMENTAL

MTBF:	> 100,000 hours
Operating Temp:	-40° C to +74° C
Storage Temp:	-40° C to +85° C
Relative Humidity:	0% to 95% (non-condensing)†

† May be extended to condensation conditions by adding suffix '-C' to model number for conformal coating.

- At 6 dB attenuation

AGENCY COMPLIANCE

FCC PART 15
COMPLIANT



MADE IN THE USA

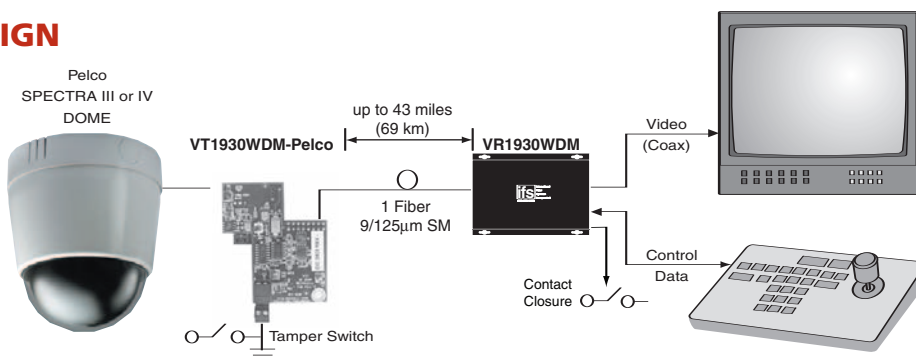
Complies with FDA Performance Standard for Laser Products,
Title 21, Code of Federal Regulations, Subchapter J

OPTICAL POWER BUDGET

FIBER	WAVELENGTH	TRANSMITTER	RECEIVER	OPTICAL PWR BUDGET	MAX. DISTANCE*
		MODEL	MODEL		
Multimode 9/125µm	1310/1550 nm	VT1920WDM-Pelco	VR1920WDM	15 dB	6.2 miles (10 km)
Singlemode 9/125µm	1310/1550 nm	VT1930WDM-Pelco	VR1930WDM	23 dB	43 miles (69 km)

* Optical transmission distance is limited to optical loss of the fiber and any additional loss introduced by connectors, splices and patch panels.
Distance can also be limited by fiber bandwidth. ** For 50/125 Fiber, subtract 4 dB from Optical Power Budget.

SYSTEM DESIGN



International
Fiber
Systems
Incorporated

TEL (203)426-1180 ■ FAX (203)426-3326 ■ www.ifs.com ■ sales@ifs.com
16 Commerce Road ■ Newtown, CT 06470

Due to our continued effort to advance technology, product specifications are subject to change without notice.

01/31/07