



VSD-308 FIRE & BURGLAR VOICE SIREN DRIVER

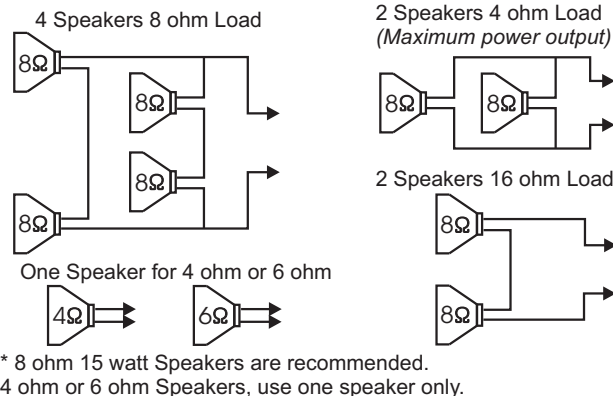
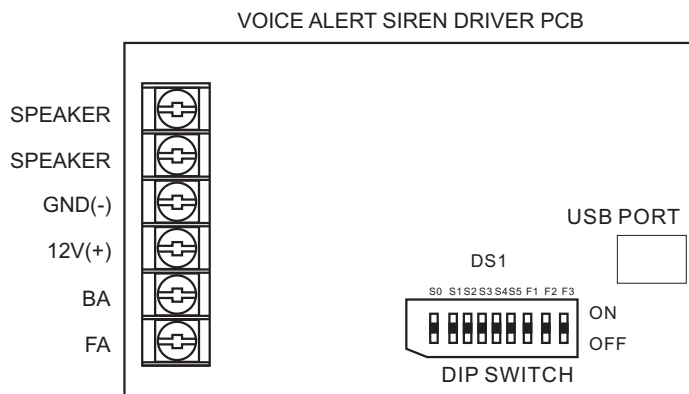
USER-RECORDABLE MULTI-TONE HIGH POWER SIREN DRIVER including 32 different preset sound combinations.

FEATURES

- ❑ User-recordable voice message: downloadable from PC using USB cable
- ❑ Fire/Burglar voice alert message
- ❑ 8-distinctive sound options including furious barking dogs sound
- ❑ 32 different selectable sound combinations
- ❑ Fire Temporal Pattern
- ❑ Field selectable Hi/Lo input levels
- ❑ Use with 4, 8 and 16 ohms speakers
- ❑ Operates on 9~18 VDC
- ❑ Compatible with AMSECO Horn/Speaker SHX-51, SH-4, FHS-2 and FHS-3

WIRING

Multiple Speaker Wiring Configuration



TRIGGER INPUT

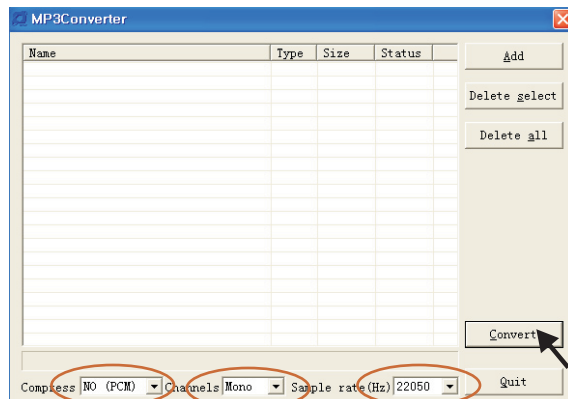
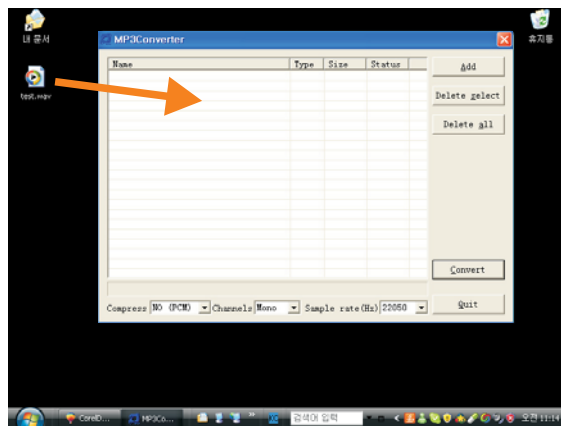
BA Terminal : Steady Signal -> Burglar, Pulsating Signal(0.5~1.5SEC.) -> Fire
FA Terminal : Steady Signal -> Fire

DIP SWITCH SETTING

S0~S5 : Sound Selection Switches. Refer to **Voice Sound Mode Selection Table** on the next page.
F1 : BA, FA Input trigger signal level **ON: HIGH(+12V DC)** **OFF: LOW**
F2 : English/Spanish Message Selectable **ON: English.** **OFF: Spanish.**
F3 : Temporal Pattern ON/OFF Selectable **ON: Temporal Pattern** **OFF: Non Temporal Pattern**
**** Place F3 always to OFF when you are using User sounds.**

How to record and download User sounds

1. Prepare the intended sound files as **.wav** or **.mp3** format:
You can also create your own sounds using Windows Recorder provided in MS Windows.
2. You may need to convert your prepared sound file to a proper wave format for proper operation of VSD-308. (The converter software is prepared in the memory of VSD-308.) Perform the following procedures to get "error-free" sound files:
 - 1) Connect VSD-308 with your PC using USB cable. Your OS will then automatically recognize your VSD-308 as a USB drive. Then copy the files in "MP3Converter" folder of VSD-308 into any folder in your computer.
 - 2) Run **Mp3Converter.exe** from your computer.
 - 3) Drag and drop your prepared sound files onto **Mp3Converter**.
 - 4) Make sure options on the bottom of the program:
Compress=>NO (PCM),
Channels=>Mono,
Sample Rate(Hz)=>22050
 - 5) Press "Convert" button. You will get **XXX_PCM.wav** files in the same directory where your original files were located.
3. Change the prepared file names (XXX_PCM.wav) to **s000.wav ~ s063.wav**.
4. Drag and drop the intended .wav files into VSD-308.
(Maximum 64 files from s000.wav~s063.wav)
5. Place the dip switch **S0** to **ON** to use saved user sounds as voice alert sirens.



**VOICE SIREN MODE SELECTION TABLE 1: WHEN USING FACTORY PRESET SOUNDS (Dip Switch S0: OFF)**

NO	DIP SWITCH SELECTION					VOICE AND SOUND OUTPUT			NO	DIP SWITCH SELECTION					VOICE AND SOUND OUTPUT		
	S1	S2	S3	S4	S5	BURGLAR ALERT	FIRE ALERT			S1	S2	S3	S4	S5	BURGLAR ALERT	FIRE ALERT	
							JP3 OFF	JP3 ON								JP3 OFF	JP3 ON
1	ON	ON	ON	ON	ON	TEST MODE 1	TEST MODE 1	TEST MODE 3	17	OFF	ON	ON	ON	ON	(BGE)+(BGS) + (A)	(FIE)+(FIS) + (H)	(D)
2	ON	ON	ON	ON	OFF	(BG*) + (A)	(FI*) + (H)	(B)	18	OFF	ON	ON	ON	OFF	(BGE)+(BGS) + (C)	(FIE)+(FIS) + (G)	
3	ON	ON	ON	OFF	ON	(BG*) + (A)	(FI*) + (G)		19	OFF	ON	ON	OFF	ON	(BGE)+(BGS) + (D)	(FIE)+(FIS) + (F)	
4	ON	ON	ON	OFF	OFF	(BG*) + (C)	(FI*) + (F)		20	OFF	ON	ON	OFF	OFF	(BGE)+(BGS) + (E)	(FIE)+(FIS) + (D)	
5	ON	ON	OFF	ON	ON	(BG*) + (C)	(FI*) + (D)		21	OFF	ON	OFF	ON	ON	(BGE)+(BGS) + (F)	(FIE)+(FIS) + (C)	
6	ON	ON	OFF	ON	OFF	(BG*) + (D)	(FI*) + (C)		22	OFF	ON	OFF	ON	OFF	(BGE)+(BGS) + (G)	(FIE)+(FIS) + (B)	
7	ON	ON	OFF	OFF	ON	(BG*) + (D)	(FI*) + (B)		23	OFF	ON	OFF	OFF	ON	(BGE)+(BGS) + (H)	(FIE)+(FIS) + (A)	
8	ON	ON	OFF	OFF	OFF	(BG*) + (E)	(FI*) + (A)		24	OFF	ON	OFF	OFF	OFF	(BGE)+(BGS)+(E)+(A)	(FIE)+(FIS)+(D)+(C)	
9	ON	OFF	ON	ON	ON	(BG*) + (E)	(FI*) + (H)	(C)	25	OFF	OFF	ON	ON	ON	(BGE)+(BGS)+(E)+(F)	(FIE)+(FIS)+(D)+(G)	TEST MODE 4
10	ON	OFF	ON	ON	OFF	(BG*) + (F)	(FI*) + (G)		26	OFF	OFF	ON	ON	OFF	(A)	(B)	(H)
11	ON	OFF	ON	OFF	ON	(BG*) + (F)	(FI*) + (F)		27	OFF	OFF	ON	OFF	ON	(C)	(A)	
12	ON	OFF	ON	OFF	OFF	(BG*) + (G)	(FI*) + (D)		28	OFF	OFF	ON	OFF	OFF	(D)	(C)	
13	ON	OFF	OFF	ON	ON	(BG*) + (G)	(FI*) + (C)		29	OFF	OFF	OFF	ON	ON	(E)	(G)	
14	ON	OFF	OFF	ON	OFF	(BG*) + (H)	(FI*) + (B)		30	OFF	OFF	OFF	ON	OFF	(F)	(D)	
15	ON	OFF	OFF	OFF	ON	(BG*) + (H)	(FI*) + (A)		31	OFF	OFF	OFF	OFF	ON	(G)	(H)	
16	ON	OFF	OFF	OFF	OFF	(BG*)	(FI*)	(D)	32	OFF	OFF	OFF	OFF	OFF	(BGE) + (BGS)	(FIE) + (FIS)	FIRE

VOICE SIREN MODE SELECTION TABLE 2: WHEN USING USER RECORDED SOUNDS (Dip Switch S0: ON)

NO	DIP SWITCH SELECTION					VOICE AND SOUND OUTPUT			NO	DIP SWITCH SELECTION					VOICE AND SOUND OUTPUT		
	S1	S2	S3	S4	S5	BURGLAR ALERT	FIRE ALERT			S1	S2	S3	S4	S5	BURGLAR ALERT	FIRE ALERT	
							F3 OFF	F3 ON								F3 OFF	F3 ON
1	ON	ON	ON	ON	ON	s000.wav	s001.wav	-	17	OFF	ON	ON	ON	ON	s032.wav	s033.wav	-
2	ON	ON	ON	ON	OFF	s002.wav	s003.wav	-	18	OFF	ON	ON	ON	OFF	s034.wav	s035.wav	-
3	ON	ON	ON	OFF	ON	s004.wav	s005.wav	-	19	OFF	ON	ON	OFF	ON	s036.wav	s037.wav	-
4	ON	ON	ON	OFF	OFF	s006.wav	s007.wav	-	20	OFF	ON	ON	OFF	OFF	s038.wav	s039.wav	-
5	ON	ON	OFF	ON	ON	s008.wav	s009.wav	-	21	OFF	ON	OFF	ON	ON	s040.wav	s041.wav	-
6	ON	ON	OFF	ON	OFF	s010.wav	s011.wav	-	22	OFF	ON	OFF	ON	OFF	s042.wav	s043.wav	-
7	ON	ON	OFF	OFF	ON	s012.wav	s013.wav	-	23	OFF	ON	OFF	OFF	ON	s044.wav	s045.wav	-
8	ON	ON	OFF	OFF	OFF	s014.wav	s015.wav	-	24	OFF	ON	OFF	OFF	OFF	s046.wav	s047.wav	-
9	ON	OFF	ON	ON	ON	s016.wav	s017.wav	-	25	OFF	OFF	ON	ON	ON	s048.wav	s049.wav	-
10	ON	OFF	ON	ON	OFF	s018.wav	s019.wav	-	26	OFF	OFF	ON	ON	OFF	s050.wav	s051.wav	-
11	ON	OFF	ON	OFF	ON	s020.wav	s021.wav	-	27	OFF	OFF	ON	OFF	ON	s052.wav	s053.wav	-
12	ON	OFF	ON	OFF	OFF	s022.wav	s023.wav	-	28	OFF	OFF	ON	OFF	OFF	s054.wav	s055.wav	-
13	ON	OFF	OFF	ON	ON	s024.wav	s025.wav	-	29	OFF	OFF	OFF	ON	ON	s056.wav	s057.wav	-
14	ON	OFF	OFF	ON	OFF	s026.wav	s027.wav	-	30	OFF	OFF	OFF	ON	OFF	s058.wav	s059.wav	-
15	ON	OFF	OFF	OFF	ON	s028.wav	s029.wav	-	31	OFF	OFF	OFF	OFF	ON	s060.wav	s061.wav	-
16	ON	OFF	OFF	OFF	OFF	s030.wav	s031.wav	-	32	OFF	OFF	OFF	OFF	OFF	s062.wav	s063.wav	-

DIP SWITCH(DS1) F2 ON:ENGLISH MODE**(BGE) = BURGLAR VOICE ALERT***" Intruder, intruder.**You have entered a restricted area,**Authorities are responding. "***DIP SWITCH(DS1) F2 OFF:SPANISH MODE****(BGS) = BURGLAR VOICE ALERT***" Intruso, Intruso. ¡Salga de inmediato!**Usted ha entrado sin autorizacion.**El personal de seguridad esta en camino. "***(FIE) = FIRE VOICE ALERT***" Fire - Fire -**Leave immediately "***(FIS) = FIRE VOICE ALERT***" Incendio, incendio.**¡Salga de inmediato! "***SOUND****(A) POLICE SIREN****(B) FIRE BELL****(C) FAST WARBLE TONE****(D) BUZZER TONE****(E) BARKING DOGS SOUND****(F) WARBLE SIREN SOUND****(G) SLOW WHOOP SOUND****(H) PULSING BELL****TEST MODE 1****BURGLAR ALERT****(BG)+(A)+(C)+(D)+(E)+(F)+(G)+(H)****FIRE ALERT****(FI)+(A)+(B)+(C)+(D)+(F)+(G)+(H)****TEST MODE 3****FIRE+(B)+(B),FIRE+(C)+(C),****FIRE+(D)+(D),FIRE+(H)+(H)****TEST MODE 4****(B)+(C)+(D)+(H)****SPECIFICATIONS:****INPUT VOLTAGE: 12V DC****CURRENT DRAW: IDLE 160 mA****4 OHM LOAD 1.3A min - 1.9A max.****8 OHM LOAD 0.8A min - 1.1A max.****16 OHM LOAD 0.5A min - 0.8A max.****DIMENSIONS : 2-5/16"(67mm)W x 4"(100mm)L x 1-5/16"(32mm)H****Potter Electric Signal Company****5757 Phantom Dr. Suite 125****St. Louis, Missouri 63042****Phone (800)325-3936, Fax (800)768-8377****<http://www.pottersignal.com>**