

VB60C product information sheet

Product Specifications

Fits most: 23" - 42" flat panels

Supports up to: 60 lbs (27.2 kg)

Tilt: -5° to +15°

Mounting profile: 2.91" (74mm)*

Maximum extension: 19.38" (492mm)*

VESA compliant: 75x75 to 400x400

Mounting: Single-stud

Warranty: 5 years

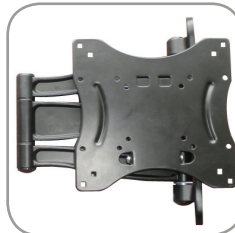
Color: Black

*adapter adds 0.15" (4mm)



Product Benefits

- Tilt, pan and swivel for maximum viewing flexibility
- Streamlined design for low mounting profile
- Fully assembled for quick two-step installation
- Includes adapters for greater VESA compatibility
- Lift n' Lock™ allows you to easily attach your flat panel to the mount
- Tension lever for easy tilt adjustment
- Easy to install
- Includes complete hardware kit



The VB60C comes fully assembled right out of the box for fast installation

Series



LED Wire



Full Motion Mounts



Tilt Mounts



Fixed Mounts



OmniMount, an innovator of A/V mounts and furniture for more than a quarter century, is the choice of professional installers and the brand most recommended by flat panel manufacturers. The VideoBasics Series is a basic line of fixed, tilt and full motion mounts brought to you by OmniMount – the leader in flat panel mounting solutions. The VB60C is a low-cost, low-profile full motion mounting option for medium thin profile flat panels.



VB60C technical data sheet

OmniMount, an innovator of A/V mounts and furniture for more than a quarter century, is the choice of professional installers and the brand most recommended by flat panel manufacturers. The VideoBasics Series is a basic line of fixed, tilt and full motion mounts brought to you by OmniMount – the leader in flat panel mounting solutions. The VB60C is a low-cost, low-profile full motion mounting option for medium thin profile flat panels.

Product Specifications

Fits most: 23" - 42" flat panels

Supports up to: 60 lbs (27.2 kg)

Tilt: -5° to +15°

Mounting profile: 2.91" (74mm)*

Maximum extension: 19.38" (492mm)*

VESA compliant: 75x75 to 400x400

Mounting: Single-stud

Warranty: 5 years

Color: Black

*adapter adds 0.15" (4mm)



Shown with adapter

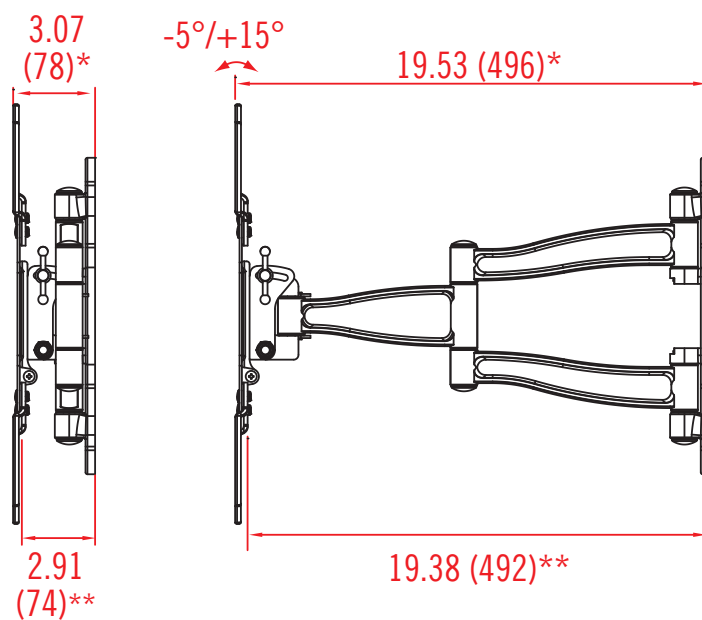
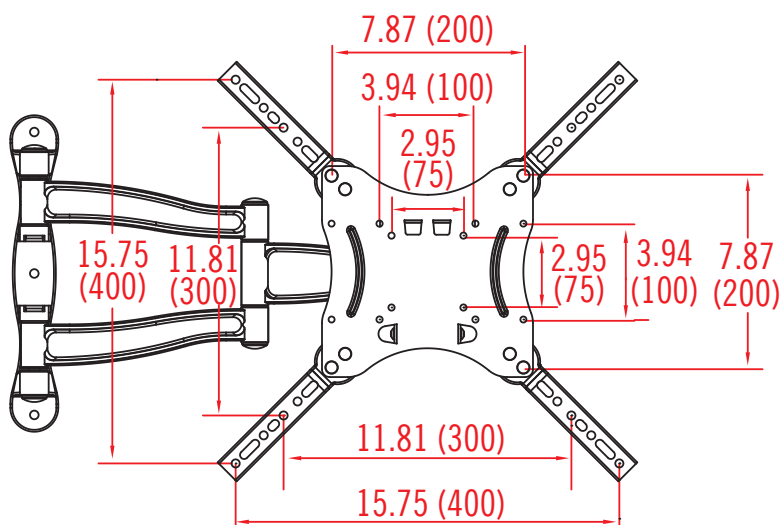
Product Benefits

- Tilt, pan and swivel for maximum viewing flexibility
- Streamlined design for low mounting profile
- Fully assembled for quick two-step installation
- Includes adapters for greater VESA compatibility
- Lift n' Lock™ allows you to easily attach your flat panel to the mount
- Tension lever for easy tilt adjustment
- Easy to install
- Includes complete hardware kit

	Stock Code	Packaging UPC	MC UPC
Americas	1004789-1	728901026041	728901719493
International	1004789INT-1	728901026041	728901719493

	Dimensions WxDxH inches (mm)	Wt lbs (kg)
Product Box	13.4 x 13.4 x 3.2 (340x340x82)	9 (4.1)
Master Carton	14.2 x 14.2 x 14.2 (360x360x360)	37.5 (17)

Box Contents	Qty
VB60C	1
Complete panel hardware kit	1
Complete wall hardware kit	1
Instruction manual	1



* with adapter
** without adapter

inches (mm)