

V5101-A5 & V5102-A5 Series High Resolution Electronic Day/Night & Day/Night Camera

Features

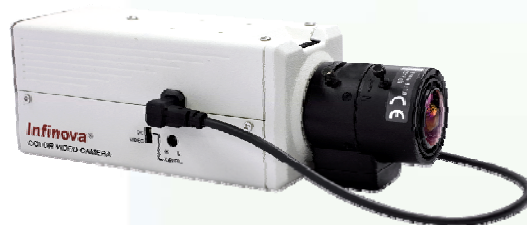
- 1/3" SONY Super HAD II CCD sensor
- Resolution: 560 TVL
- Electronic Day/Night functionality (V5101-A5 series);
Automatic Day/Night functionality with ICR filter (V5102-A5 series)
- High sensitivity, anti-blooming and S/N ratio
- Auto Electronic Shutter (AES), Auto Gain Control (AGC), Auto White Balance /
Manual White Balance (ATW/MWB), Backlight Compensation (BLC)
- Back Focus adjustment
- Supports both DC-Drive and VIDEO-Drive lens
- LEVEL adjustment
- 12VDC/24VAC or 100~240VAC power supply

Description

Infinova's V5101-A5 & V5102-A5 series high resolution cameras feature a high resolution 1/3" SONY Super HAD II CCD sensor. Advanced Digital Signal Processing (DSP) provides 560 TV lines of resolution and excellent S/N ratio of more than 54 dB.

The V5101-A5 series have electronic Day/Night functionality. While the V5102-A5 series have automatic Day/Night functionality thanks to built-in ICR filter. High quality images with the smallest details are available even in low light conditions. These cameras are the perfection solution for a 24x7 around-the-clock surveillance.

The V5101-A5 & V5102-A5 series cameras are made of aluminum alloy construction and have an operating temperature of 14°F ~ 122°F (-10°C ~ 50°C). They are available in manual or DC/VIDEO auto-iris, C/CS-mount lens. These cameras are the ideal surveillance solution for shopping malls, banks, office buildings, parking lots, city streets and other applications.



North America
World Headquarters, USA
Infinova
51 Stouts Lane
Monmouth Junction, NJ 08852
United States

Phone:
+1 732-355-9100
+1 888-685-2002 (toll-free)
Fax: +1 732-355-9101
E-mail: Sales@infinova.com

Latin America & Caribbean
Miami: +1-954-990-0787
Mexico: +52-55-5543-5563
Venezuela: +58-414 205-0106
E-mail: Sales-LAR@infinova.com

Brazil: +55-41-3016-5503
E-mail: vendas-brasil@infinova.com

Argentina: +54-116-009-6009
E-mail: ventas@infinova.com.ar

Europe
Phone: +40 723 536600
E-mail: Sales-EUR@infinova.com

Asia Hong Kong
Phone: +852 2795 6540
E-mail: Sales-HK@infinova.com

Middle East & Africa
Phone: +965 2247 5678
E-mail: Sales-ME@infinova.com

India
+91 20 2669 8599
E-mail: Sales-IND@infinova.com

Ordering Information

V5101-A5004	Analog fixed camera, 1/3 inch CCD, Electronic day/night, 560TVL, NTSC, 12VDC/24VAC
V5101-A5009	Analog fixed camera, 1/3 inch CCD, Electronic day/night, 560TVL, NTSC, 100~240VAC
V5101-A5014	Analog fixed camera, 1/3 inch CCD, Electronic day/night, 560TVL, PAL, 12VDC/24VAC
V5101-A5019	Analog fixed camera, 1/3 inch CCD, Electronic day/night, 560TVL, PAL, 100~240VAC

V5102-A5004	Analog fixed camera, 1/3 inch CCD, Day/night, 560TVL, NTSC, 12VDC/24VAC
V5102-A5009	Analog fixed camera, 1/3 inch CCD, Day/night, 560TVL, NTSC, 100~240VAC
V5102-A5014	Analog fixed camera, 1/3 inch CCD, Day/night, 560TVL, PAL, 12VDC/24VAC
V5102-A5019	Analog fixed camera, 1/3 inch CCD, Day/night, 560TVL, PAL, 100~240VAC

RECOMMENDED ACCESSORIES

For V5101-A5, Vari-Focal Lenses – (Fixed and Zoom Lenses are also available)

V1122-308	Lens, f=3.0-8mm, F/1.0, DC auto iris, 1/3 inch, CS
V1122-2812	Lens, f=2.8-12mm, F/1.4, DC auto iris, 1/3 inch, CS
V1122-550	Lens, f=5-50mm, F/1.4, DC auto iris, 1/3 inch, CS

For V5102-A5, Vari-Focal IR Lenses – (Fixed and Zoom Lenses are also available)

V1132-3085	Lens, IR correction, f=3.0-8.5mm, F/1.0, DC auto iris, 1/3 inch, CS, Aspherical
V1132-2812	Lens, IR correction, f=2.8-12mm, F/1.2, DC auto iris, 1/3 inch, CS, Aspherical
V1132-7550	Lens, IR correction, f=7.5-50mm, F/1.3, DC auto iris, 1/3 inch, CS, Aspherical

Power Supplies

N3921-24A-1	Power Supply, 24VAC, 20VA, Plug-In, 120 VAC
N3921-24A-2	Power Supply, 24VAC, 20VA, Plug-In, 230 VAC

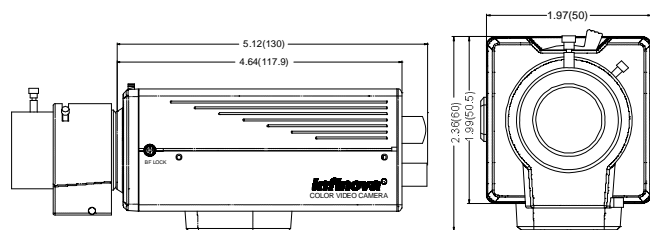
Indoor Adjustable Mounts for Ceiling and Wall

V1551-7	Fixed camera direct mount; 7 inch
V1551-10	Fixed camera direct mount; 10 inch

Indoor/Outdoor Wall Mount Housings are available

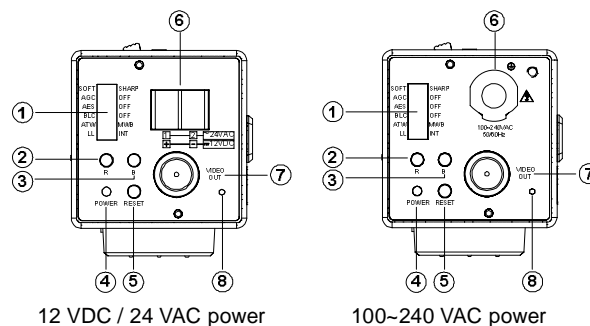
V1400 Series	Fixed Camera Housing, Optional Heater and Blower
--------------	--

Dimensions



(Unit: inch, in the parentheses is mm)

Back Panel



- ① DIP Switch
- ② Color Temperature (Red)/Phase-Adjust Key
- ③ Color Temperature (Blue)/Phase + Adjust Key
- ④ Power LED Indicator
- ⑤ Reset
- ⑥ Power Input Terminal
- ⑦ Video Output
- ⑧ Anti-falling Screw

Specifications

Model	V5101-A5	V5102-A5
Image Sensor	1/3" SONY Super HAD II CCD	
Effective Pixels (H × V)	NTSC: 768×494; PAL: 752×582	
Scanning System	2:1 interlacing	
Resolution	560 TVL	Color mode: 560 TVL; B/W mode: 600 TVL
Sensitivity	Color & B/W mode: 0.24 lux @ F1.2 (30 IRE, AGC ON)	Color mode: 0.5 lux @ F1.2 (30 IRE, AGC ON); B/W mode: 0.01 lux @ F1.2 (30 IRE, AGC ON)
S/N Ratio	> 54 dB (AGC OFF)	
Auto Electronic Shutter	ON/OFF, NTSC: 1/60~1/100,000s, PAL: 1/50~1/100,000s	
Auto Iris	DC Drive or VIDEO Drive	
Lens Mount	C or CS mount (adjustable)	
Gamma Correction	0.45	
White Balance	ATW/MWB	
Color Temperature Range	2600K~9000K	
Auto Gain Control	ON/OFF	
Backlight Compensation	ON/OFF	
Sync. System	Internal/ Line Lock	
Video Output	1.0 Vp-p (75 Ohm), BNC connector	
Power Supply	12 VDC/24 VAC or 100~240VAC	
Power Consumption	4W	6W (maximum)
Operating Temperature	14° F ~ 122° F (-10° C ~ 50° C)	
Storage Temperature	-4° F ~ 140° F (-20° C ~ 60° C)	
Operating Humidity	0~90% RH (non-condensing)	
Unit Dimensions (H×W×L)	2.36" x1.97" x 5.12"(60 mm x 50 mm x 130 mm)	
Box Dimensions (L×W×H)	7.28" x 4.13" x 3.78" (185 mm x105 mm x96 mm)	
Unit Weight	0.79 lbs. (0.36 kg)	
Shipping Weight	1.10 lbs. (0.50 kg)	
Certifications	CE/EMC: EN 55022, EN 55024, EN 61000-3-2, EN 61000-3-3, (Certificate No.: BCT09BC-075E); FCC: Part 15 Subpart B (Certificate No.: BCT09BC-074E); ISO 9001: 2008	