

V2210 Series

Matrix Switcher Video Management Software

Infinova
The Integrator's Manufacturer

Features

- User priority level can be defined to limit certain operations
- Supports CCTV centralized management
- On-screen simulated keyboard
- Supports live video display, compatible with DVR video, Network video and multiple video cards
- Electronic maps and graphics
- Integrates with Port Alarm, Network Alarm, and VISTA Network Alarm
- PTZ, lens and auxiliary switch control
- Supports intelligent operations of dome cameras
- Provides alarm scheme
- Network time synchronization,

Ordering Information

- V2210-S Matrix GUI software, LAN control for network switchers, no PC video capture card, supports LAN video
- V2210-K Matrix GUI software, LAN control for network switchers, w/PC video capture card, supports LAN video

System Features

Multilevel Control and Graph Display

- High security level
- 64 control levels to limit user's operations exactly
- Complete graph display and icon edit
- All operations can be saved

CCTV Management and Control

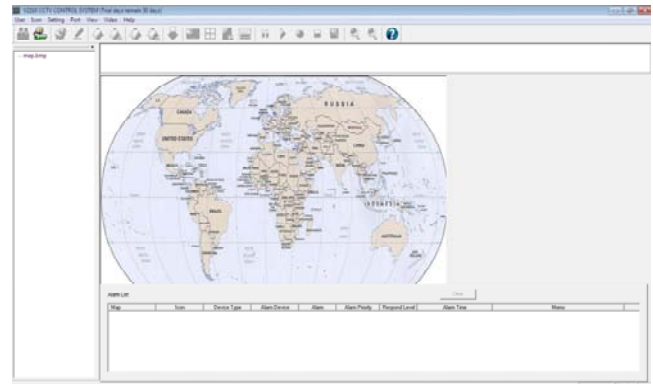
- Perform switch, preview and PTZ control over the cameras connected to matrixes
- Perform tour and salvo
- Provide simulated keyboard to control matrix's operation

Alarm and Network Alarm

- Link with alarm devices and CCTV devices,
- Timing arming/disarming and alarm events record are provided
- Integral arming/disarming. Input alarm events upon alarm response for backup
- User with lower control level can not control alarm and link of higher level
- Support Vista alarm ,Vista network alarm and alarm link

Multiplexer Control

- A simulated on-screen control panel allows users to operate rapidly
- 4/9/16 photos display
- Multiple CCTV modules can be defined, and the modules' start time can be set separately
- Start the control icon, and then it will perform CCTV link control according to the setup



Description

The V2210 is a video management software package for controlling a complete CCTV system. The V2210 controls Infinova matrix switchers and receives network alarm via TCP/IP network; controls alarm interfaces and multiplexers via RS-232 serial ports. The V2210 allows an entire CCTV system to be controlled from a single PC platform.

Username and password login screens are provided for a maximum level of security. The login feature also ensures that users can only operate the system at his/her own authorized level of administration. When appropriate video server is supplied, the system supports real-time on-screen video display. V2210 features a built-in module that simplifies the operation of Infinova multiplexers.

PC Specifications

System Required	PC platform
Hardware Requirements	Intel® Pentium® IV 2.4G(or better) with 64MB RAM available Graphics card with 1024x768 resolution
Operating System	Windows 2000/XP or greater
Ports Required	Ethernet/LAN (Additional serial ports will be required if multiple systems are being controlled)
Parallel Port	1
Operating Device	Mouse and keyboard
Video Server	Use video server recommended by Infinova