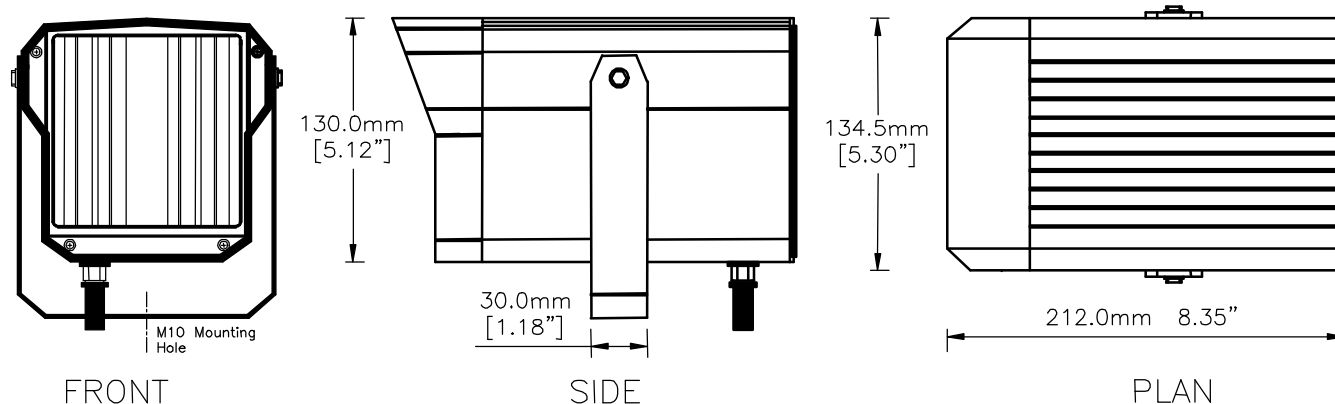


UF500 Weather Protected Covert and Semi-Covert Night Time Illuminator

The UF500 series of illuminators for CCTV applications is specially designed for covert or semi-covert operations using special gold optics and high efficiency quartz halogen bulbs for **unsurpassed night viewing up to 200 meters** (with dual 10° lamps). The unique cosec² lens reverses the inverse square law to provide evenly distributed illumination from the foreground to background for the entire scene. The shorter and thicker bulb filaments operating at lower voltages and temperatures are less vulnerable to shock and vibration. The result of these features is a high-performance illuminator with 40% higher efficiency and 50% longer life than traditional illuminators.

The UF500, patent applied by **DERWENT**, is the favored illuminator in the UK where night-time video monitoring is broadly utilized for proactive policing.



Illuminator Specifications

Radiated Output	Similar to ordinary 500 Watt
Viewing Range	Various models to match camera specs
Optics	Optimized focus, gold optics system
Consumption	220W (28VAC)
Bulb life	3,000 hours
Construction	Robust aluminum casting/extrusion
Weight	1.9 kg (4.2 lbs)

Benefits

- High output to 200+ meters (dual lamp, 10° beam)
- Range of beam patterns from spot to wide angle
- Range of filters from 730 nm to covert 950 nm
- Low operating cost, using less power
- Balanced illumination – no foreground overexposure
- Rugged and weatherproof
- Long bulb life at 3,000 hours
- Low operating voltage at 28 VAC
- Extends the dynamic range of CCD cameras in night time conditions

Specifications subject to change without notice

Patent Pending - © Extreme CCTV 2000

UF500 v11.doc-991129

Dealer / Distributor :

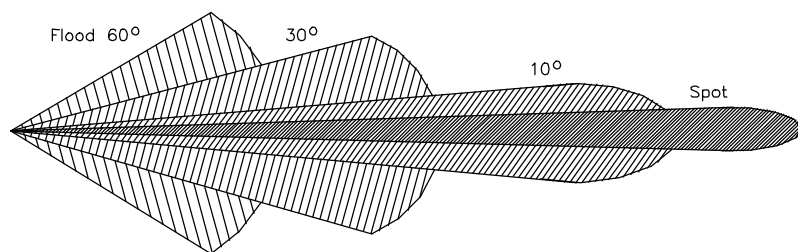
Global HQ: www.ExtremeCCTV.com

USA / Canada: 4060 McConnell Drive, Burnaby, BC Canada V5A 3A8
Toll Free N.A. 888-409-2288 Tel. +1.604.420.7711 Fax +1.604.420.3300

Power Supply Specification: (see also UF500.001/003)

Input	120 VAC 60 Hz or 230 VAC 50 Hz
Output	28.6 VAC nominal Single lamp system 220VA, 7.7 amp draw Dual lamp system 420VA, 14.7 amp draw
Photocell	Dusk/Dawn automatic switching
Remote Control	On/Off volt-free contact switching
Auxiliary Output	12V DC @ 650ma regulated
Dimensions	250mm x 160mm x 90mm
Weight	Single 3.0 kg (6.6 lbs) Dual 5.5 kg (12.0 lbs)

Beam Pattern



Example Dual Lamp Configuration

Specification:

- 1 Two (2) UF500.203 I.R. Illuminator 830 nm / 10°
- 2 UF500.003 Dual Lamp Power Supply
- 3 EXMB.010 Dual Arm Mounting Bracket
- 4 Weatherproof Housing
- 5 Pan-Tilt Motor
- 6 Extreme CCTV Extended IR S700 Camera

Note: View range, video signal, signal/noise ratio and field of view will depend on the sensitivity and spectral response of your camera/lens combination. Contact Extreme CCTV for a list of recommended CCD cameras.

Visit WWW.ExtremeCCTV.com for videoprints
DEMO VIDEO available @ Extreme CCTV

Part Numbers:

Illuminators: UF500.X0Y (x = beam pattern, y = filter)

Examples:

UF500.304 = UF500 @ 30° cosec beam, 950 nm filter

UF500.203 = UF500 @ 10° cosec beam, 830 nm filter

x	Beam Pattern	y	Filter
1	5° - Spot Beam	1	730 nm
2	10° - Cosec ² beam	2	-
3	30° - Cosec ² beam	3	830 nm
4	60° - Flood beam	4	950 nm
		5	Mired - Color Visible

Power Supplies: (contact Extreme CCTV for 230 VAC / 50 Hz units)

UF500.001 120 VAC / 60 Hz, Single Lamp Power Supply

UF500.003 120 VAC / 60 Hz, Dual Lamp Power Supply

Options:

EXMB.010 Dual Arm Bracket for Standard Pan/Tilt Heads

UF500.010 Replacement Bulb Kit

Applications:

- *Night-time surveillance where normal lighting is too expensive or prohibited.*
- *Covert surveillance in a wide range of outdoor conditions.*
- *Prison properties.*
- *School ground properties*
- *Airport grounds where visible lighting is prohibited.*
- *Police surveillance to streets and buildings.*
- *Enhancement to motorized pan-tilt-zoom cameras for low-light and **backlight** conditions.*

Specifications subject to change without notice

Patent Pending - © Extreme CCTV 2000

UF500 v11.doc-991129

Dealer / Distributor :

Global HQ: www.ExtremeCCTV.com

USA / Canada: 4060 McConnell Drive, Burnaby, BC Canada V5A 3A8
Toll Free N.A. 888-409-2288 Tel. +1.604.420.7711 **Fax** +1.604.420.3300