



UC-PRO200



Black

MAXIMUM LOAD 100LBS (45.4KG)

www.promounts.com

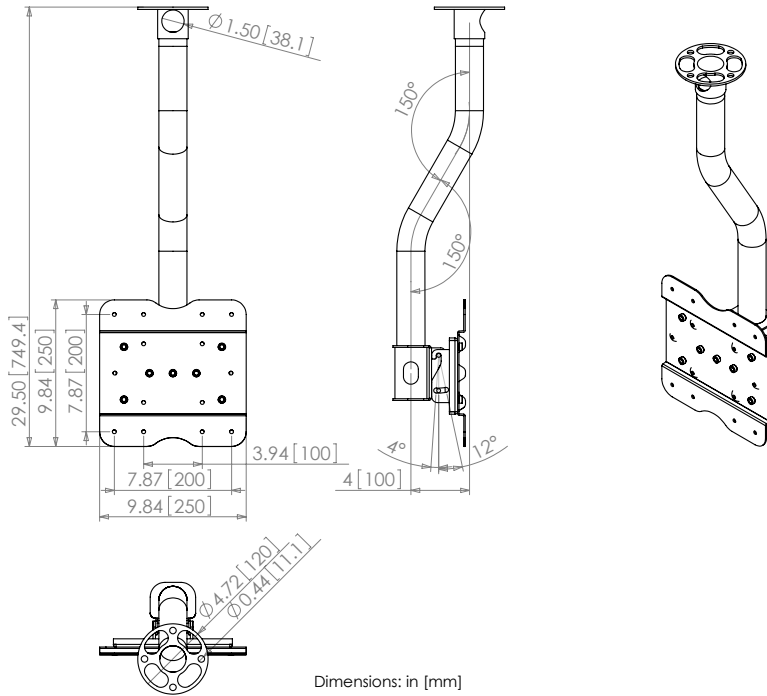
Universal Ceiling Mount for 15" to 40" flat panels.

The UC-PRO200 has a very clean and sleek look that facilitates either landscape or portrait viewing while allowing 360 degrees of rotation and 15 degrees of tilt. Shipped with high quality curved 1.5" NPT pipe.

- 360 degrees swivel
- Tilts -4 to 12 degrees
- 1.5" NPT pipe length 30"
- Offset pipe for maximum strength ceiling attachment
- Includes all panel mounting hardware
- VESA compliant: 100 x 100, 200 x 100, 200 x 200
- Manufacturer's limited lifetime warranty



UC-PRO200



MAXIMUM LOAD 100LBS (45.4KG)

Specifications

Weight

Estimated: 17 lbs (7.7 kg)

Mounting

We recommend that this product be installed by a professional A/V installer

Dimensions

TBA

Architects and Consultants: please contact ProMounts customer service for necessary drawings and files. For complete high resolution images, technical specifications and drawings please visit www.promounts.com and click on Download Center.

ProMounts: 5741 Buckingham Parkway, Unit C, Culver City, CA 90230 **Phone:** 866 668 6872, or 310 645 6400 **Email:** info@promounts.com Fax: 310 645 0189 **ProMounts** is a division of Scadlock LLC

www.promounts.com