

## Request to Exit Bars

### 672 TouchBar and 692 SmartBar™

672 TouchBar



692 SmartBar™



Dual detection circuits

Low profile

GID (Glow in the Dark)  
"PUSH TO EXIT" Option

Cast metal end caps

### 692 SmartBar

The 692 SmartBar is an electronic switching device with no moving parts, which serves as a non-latching request to exit bar at an egress door. It allows one motion egress at doors equipped with electromagnetic or electronic locks, with "no prior knowledge" required by the user. Touching the Smartbar at any point on the bar activates internal circuitry which controls power to the locking device. No moving parts results in low maintenance and long life.

The 692 SmartBar provides two directionally opposed infrared detection circuits to sense an exit request. As a person touches the bar the light beam is broken. The patent pending redundant system provides a high level of life safety and peace of mind to the end user.

An audible alarm is standard. This feature provides a security alarm to alert when there is a prolonged unlocked condition caused by a continued break in the light beam. This feature is desirable in applications requiring monitoring of security conditions or delayed egress.

- Optional Lighted "Push to Exit"
- Dual infrared detection circuits – patent pending
- No Moving Parts - One Motion Egress
- Audible alarm standard, alerts prolonged unlock condition
- DPDT relay standard - signals access control panel or auxiliary device

### 672 TouchBar

The 672 TouchBar is a request to exit device which releases electromagnetic or electronic locks when the bar is depressed. Designed for easy installation, smooth operation and maximum durability, the 672 TouchBar offers unmatched features and user benefits.

The "Push to Exit" signage provides an obvious exit indication for building occupants and the simplified design allows for reversing the signage in the field. The new pivoting bar design allows 1/4" activation and the 2 1/4" low profile provides ample clearance through the door - notably less than others in the industry.

The device's rugged cast ramped end caps deflect blows and provide extra durability. With its easy installation and wiring the 672 TouchBar Request to Exit Device is another solution in the Locknetics product offering.

- 1/4" Movement activates immediate release
- Optional lighted "PUSH TO EXIT"
- SPDT (**standard**)
- DPDT available for monitoring purposes

### Benefits of Using Request to Exit Bars

- Heavy duty aluminum extrusion with cast metal end caps - Maximum durability
- Field reversible, field sized
- Quick install brackets / Universal mounting system for aluminum, hollow metal and wood doors
- Low profile for greater clearance through door
- "PUSH TO EXIT" signage designates opening
- Glow in the Dark (GID) "PUSH TO EXIT" option - Locknetics exclusive

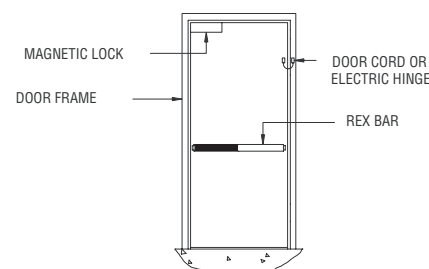
# Request to Exit Bars

672 TouchBar and 692 SmartBar™

## How To Order Request to Exit Bars

**672 – 36 – 628 – RD – RHR – DP**

Select Model	_____
Select Door Size	_____
Select Finish	_____
Select Pushpad	_____
Select Handing	_____
Select Options	_____



### 1. Select Model

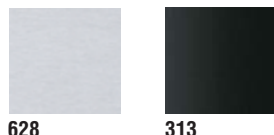
- 672** for aluminum, hollow metal and wood doors  
**692** for aluminum, hollow metal and wood doors

### 2. Select Door Size

- 36"  
 42"  
 48"  
 SP-X" (X"= door width from 26" to 48")

### 3. Select Finish

- 628** Satin Anodized Aluminum (*standard*)  
**313** Dark Satin Bronze Anodized Aluminum



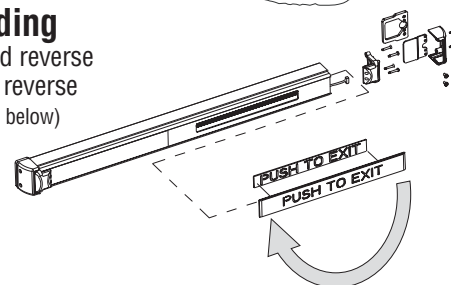
### 4. Select Pushpad

- RD** Black with red "PUSH TO EXIT"  
**BRG** Black with back lit "PUSH TO EXIT" red turns to green with activation  
**GID** Black with Glow in the Dark "PUSH TO EXIT"



### 5. Select Handing

- RHR** Right hand reverse  
**LHR** Left hand reverse  
 (Field reversible, see below)



#### Reversing the "PUSH TO EXIT" sign - Field Handing

Remove End Cap(s) and Beam housing (692) or Pushpad End (672). Remove "PUSH TO EXIT" Sign. Reverse Switch position and Circuit Board (only with BRG option). Rotate "PUSH TO EXIT" sign and re-insert. Re-install beam housing and end cap(s).

### 6. Select Options

- DP** Double pole, double throw switch (standard feature for 692 SmartBar)  
**WD\*** Sexnut door kit for heavy duty wood door and hollow metal door applications

#### Armored Door Cords for 672 TouchBar

- 788-12** 12"x3/8" armored door cord (less wire) inswinging (standard with the 692 SmartBar)  
**788-18** 18"x3/8" armored door cord (less wire) outswinging

#### Armored Door Cords for 692 SmartBar

- 798-12** 12"x1/2" armored door cord (less wire) inswinging  
**798-18** 18"x1/2" armored door cord (less wire) outswinging

\* NOTE: Screw pack supplied has self-drilling and self-tapping screws for aluminum and wood door applications; rivnuts for hollow metal door applications



#### 672 TouchBar Electrical Specifications:

- Input Voltage: 12 or 24 VDC maximum current draw .25 Amps  
 Switch: SPDT contacts rated 3 Amps @ 30 VDC 6A 125-250 VAC  
 Wiring: 3 Conductor Cable - 20 AWG - 6 ft. long (*standard*)  
 6 Conductor Cable - 20 AWG - 6 ft. long available with BRG option or DPDT option  
 (Both cables provided with BRG/DPDT combination)

#### 692 SmartBar™ Electrical Specifications:

- Input Voltage: 12 or 24 VDC maximum current draw .5 Amps  
 Switch: DPDT contacts rated 4 Amps @ 30 VDC  
 Wiring: 8 Conductor Cable - 20 AWG - 6ft. long (*standard*)