

SRD-870DC

8CH, H.264, 240fps@ D1, DVD, Up the Coax Support



Summary

Providing broadest range of features, including the most robust H.264 compression method, up to 10TB of massive storage capacity inside, audio recording, diverse search methods, and DVR-to-Client architecture, Samsung's SRD offers optimum performance for digital video recording solution.

Features

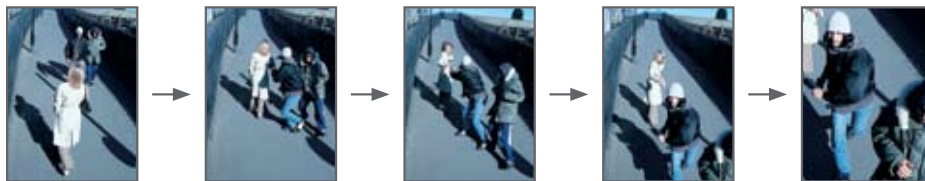
- 8ch D1 real-time DVR
- Video (H.264) / Audio (ADPCM)
- Up to 240 FPS recording rate
- Up to 8ch audio inputs and 1ch audio outputs
- Combined BNC and VGA/HDMI video output for main display
- SRD-870DC: Max 5 internal HDD (HDD x 5)
- HDD & DVD SATA interface
- DDNS
- Built-in web viewer
- DVD-RW
- Event notifications by E-mail
- Up the Coax support

H.264

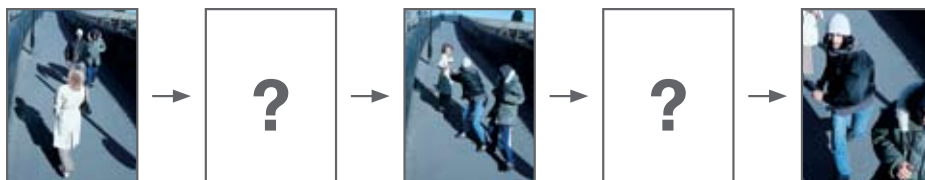
Using the H.264 standard for video compression, SAMSUNG cameras capture exceptionally crisp motion while cutting the file size by up to 50%. This means saving money on storage without sacrificing in video quality.



Full D1 Real-time Frame Rate



240 frame/sec @ D1 Resolution



Competition



SAMSUNG SECURITY | Toll Free: 888-595-2288 | Fax: 972-245-7333
This product specifications and manual are also available in pdf format at www.samsung-security.com
The information is subject to change without notice - v6.24.10

SRD-870DC

SRD-870DC

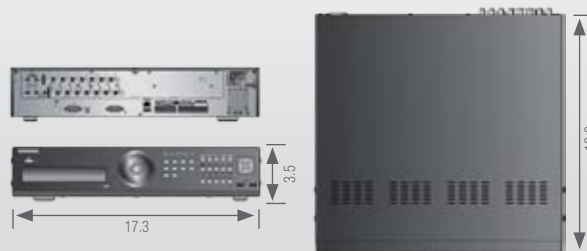
8CH, H.264, 240fps@ D1, DVD, Up the Coax Support



Specifications

Video	Inputs	8 composite video 0.5-1 Vpp, 75 ohm automatic termination
	Resolution	704x480 NTSC
Live	Frame rate	240FPS NTSC
	Resolution	704x480 NTSC
	Multi Screen display	1/4/6/8/9/13/PIP
Performance		
Operating System	Embedded	Linux
Recording	Compression	H.264
	Record Rate/NTSC	Up to 240FPS @ 704x480
		Up to 240FPS @ 704x240
		Up to 240FPS @ 352x240
	Mode/NTSC	Manual, Schedule (Continuous/Event), Event(Pre/Post), Time lapse (0.9/1.9/3.8/7.5/15/30 FPS)
	Mode/PAL	Manual, Schedule (Continuous/Event), Event(Pre/Post), Time lapse (0.8/1.6/3.1/6.2/12.5/25 FPS)
	Overwrite modes	Continuous
	Pre-alarm	Up to 30 sec. (5,10,20,30 Sec)
	Post-Alarm	Up to 6 hour. (5,10,20,30 sec,1,3,5,10,20 min,1,2,3,4,5,6hour)
Search & Playback	Search mode	Date/time, Event, Back up, Pos, Motion (*All Search Included Preview Function)
	Playback function	Fast Forward/Backward, Slow Forward/Backward, Step Forward/Backward
Network	Transmission speed	Up to (15Mbps, Unlimited(4M)/2/1.5/1 Mbps/800/600/500/400/300/200/100/50 kbps
	Bandwidth control	Automatic
	Multi Stream	H.264(4CIF/CIF)
	Remote users Maximum	Search(3)/Live Unicast(10)/Live Multicast(20)
	Protocol support	TCP/IP, DHCP, PPPoE, SMTP, NTP, HTTP, DDNS, RTP, RTSP
	Monitoring	Net-I Viewer, SVM-S1, Smart viewer, Webviewer
Storage	Internal HDD	Max 5 internal HDD (HDD x 5)
	External HDD	Up to 2 expansion bay (up to 4 HDD each)
	DVD Writer (Back-up)	YES
	USB (Back-up)	3 USB Ports
	File Format (Back-up)	AVI, MDB(DVR Play back), EXE(include Player)
Security	Password Protection	1Admin, 10 Group, 20 User per 1 Group, User can be assigned authority for function
	Data Authentication	Watermark
Interface		
Monitors	VGA	Analog RGB 800x600, 1024x768, 1280x1024 resolution
	HDMI	480p/720p/1080p resolution
	Main Composite	BNC, 1 Vp-p, 75 ohm
	Spot Composite	1BNC, 1 Vp-p, 75 ohm, support Multi screen and camera title
	Loop Outputs	8
Audio	Inputs	8 line in (Built in 4CH, Option : Audio Extension Cable)
	Output	1 line
	Compression	ADPCM
	Sampling rate	16KHz
Alarm	Inputs	Terminal 8 inputs, NO/NC
	Outputs	Terminal 4 relay outputs, NO/NC
	Remote notification	Notification via e-mail
Connections	Ethernet	1 RJ45 10/100/1000 Base-T
	Serial interface	RS-232
	PTZ control interface	RS-485
	PTZ Keyboard	RS-485
	USB	USB 2.0, 3 ports
	e-SATA	2 External SATA ports
	Application Support	Mouse, Remote Controller
Dome Protocols	Supported PTZ cameras	Samsung-E/ Samsung-T/ Pelco-D/ Pelco-p/Panasonic/ Phillips/ AD/ DIAMOND/ ERINA/ KALATEL/ VCL TP/MICON
General		
Electrical	Input Voltage	100 to 240 VAC \pm 10%; 50/60 Hz, Autoranging
	Power consumption	Max. 55 W (with 1x HDD)
		Max. 65W (with 2x HDD)
Environmental	Operating Temperature	+32°F to +104°F (+0°C to +40°C)
	Humidity	20%RH to 85%RH
Mechanical	Dimensions (W x H x D)	17.3 x 3.5 x 16.9 in (440 x 88 x 430 mm)
	Weight (2x hard disks)	Approx. 16.1 lb (7.5 kg)
	Rack mount kit	2 EA
Lauguage		English, Spanish, French, German, Italian, Polish, Portuguese, Russian, Turkish, Japanese, Czech, Swedish, Danish, Korean, Chinese, Netherlands

Dimensions (unit : in) Front/Rear Panel



Certifications



SRD-870DC

SAMSUNG

SAMSUNG SECURITY | Toll Free: 888-595-2288 | Fax: 972-245-7333

This product specifications and manual are also available in pdf format at www.samsung-security.com
The information is subject to change without notice - v6.24.10