

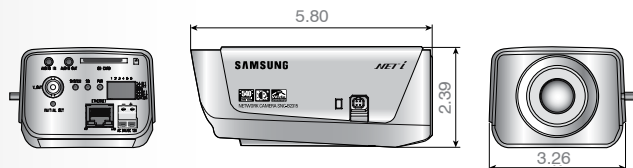
SNC-B2315

1/3" Network, High Resolution, WDR, Day/Night, Color Digital Camera



Dimensions (unit : in)

Front/Rear Panel



Summary

The SNC-B2315 is a high performance, IP network enabled high resolution, color camera equipped with 1/3" Super HAD CCD and an embedded Linux OS, 16Mb of flash memory, 128Mb of SDRAM with SD card recording on alarm. The camera supports a default 1 channel client viewer running on Windows XP or Vista with MPEG4 or MJPEG G.711 compression (Net-I, IE Explorer 6.0 higher).

The SNC-B2315 has excellent Wide Dynamic Range, and produces sharp images even in harsh lighting conditions that have large contrasts between lightness and darkness. The Wide Dynamic Range Circuit excels in severe lighting conditions such as sun rooms, ATMs or toll way systems. The SNC-B2315 has the option to automatically switch from color to high sensitivity B/W at night.

Features

- Real time 30 Images per second at High quality (D1)
- MPEG-4 & Motion JPEG Dual Encoding and Streaming Simultaneously
- Pre/Post Alarm image buffering
- True Day and Night Function
- DDNS Support
- Power of Ethernet (PoE) support
- Bi-directional Audio Support
- SD Memory Card Slot for Alarm Image Recording
- True Day/Night Cut Filter
- Wide Dynamic Range (WDR)
- Video Motion Detection

Recommended Accessories

GV-TRAN-24-40LED, 24VAC, 40VA, Class II plug in transformer

GV-3.5-8ADC, 1/3" 3.5-8mm, Vari-Focal, DC Auto Iris

GV-IDWMBG, 6.25" indoor mount

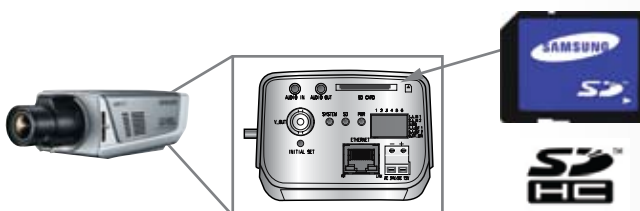
GV-HOU3512HB, IP66 rate, indoor/outdoor housing w/ Heater & Blower

SD Memory Card

User can select important images to be recorded to the SD memory card such as: Alarm Events, Motion Detection or Time Scheduled Events. Using the WebViewer or **NET-I** software, you can remotely access the images from the SD card installed in the SNC-B2315, SNC-B5395, and SNC-M300

* SNC-B2315 is compatible with SD and SDHC standard

* SNC-B2315 can support up to 16GB capacity of SDHC memory



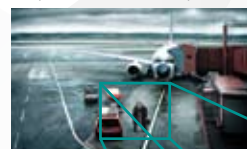
High Resolution

SAMSUNG Electronics' IP Cameras SNC-B2315 and SNC-B5395 with D1 high resolution provide clear, detailed and amazingly bright images for surveillance and security monitoring.

VGA (640 x 480)



D1 (720 x 576, 720 x 480)



PoE (Power Over Ethernet)

With built-in support for Power over Ethernet (PoE), the SNC-B2315, SNC-B5395, and SNC-M300 Network cameras can be powered through the network cable, simplifying installation. Also, SAMSUNG Electronics network cameras offer three power choices, AC24V, DC12V or PoE, with automatic detection making installation fast and efficient.

Normal Connectivity

Network cable and power line



PoE

Only network cable needed



SAMSUNG

SAMSUNG | GVI Security • Toll Free: 888-595-2288 • Fax: 972-245-7333

This product specifications and manual are also available in pdf format at www.gviss.com
The information is subject to change without notice • v2.6.09

GVI Security

SNC-B2315

1/3" Network, High Resolution, WDR, Day/Night, Color Digital Camera



Specifications

Camera Type	Color, B/W	Wide Dynamic Range
	Scanning system	525 Lines, 30f/sec
Image	Device	Super-HAD PS CCD, 410K pixels
	Size	1/3"
Scanning	Pixels- Effective	768(H) x 494(V)
	System	2:1 Interlace
	Horizontal Frequency	15,750Hz
	Internal Mode	
	Vertical Frequency	60Hz
	Sync	Internal
Min. Scene Illumination	Resolution	540TVL (Color); 570 TVL (B/W)
	Color	0.0005 Lux @15IRE, Sens-Up x256 0.4 Lux @ 50IRE
Electronic Shutter speed Functions	B/W	0.00005 Lux @15IRE, Sens-Up x256 0.04 Lux @ 50IRE
	ELC	Off/On (Max.1/10K sec)
	Alarm Output	(Yes, 2 ea)
	BLC	Off/On(Area setting: Left, Right, Center)
	AGC	Off/Low/High
	High Speed Shutter	Off ~ 1/10K sec
	Motion Detection	Off/On(High/Medium/Low)
	WDR	2 adjustable levels
	Sens Up	OFF ~ x256
	Day/Night (Moving Filter)	Day/Night/Auto/Ext
	White Balance	ATW1 / ATW2 / AWC / Manual
Lens	Mount	C/CS Mount Compatible
	Lens	Auto Iris (Video/DC) / Manual Iris
	Resolution	540TVL (Color) / 570TVL (B/W)
Analog Video Output	VBS	1.0Vp-p(75 ohm, composite)
S/N Ratio	S/N Ratio	50dB
OS Environment	Network Board OS	Embedded Linux
	Client Viewer OS	Windows XP, VISTA
Client S/W		1Ch Web Browser Viewer (Default), NET-I CMS S/W (Ver.2.5)
Browser	Web browser	Internet Explorer 6.0 higher
Compression	MPEG4 , MJPEG, G.711	Audio & Video Codec
Network Hardware	Flash memory	16M byte
	SDRAM	128M byte
Network	Ethernet	10/100BASE-T
Network Protocol	Network Protocol	TCP, UDP, NTP, HTTP, DHCP, PPPoE
	Streaming	TCP, UDP (Unicast, Multicast)
	DDNS	Supporting Samsung DDNS and Public DDNS servers
Video resolution		D1: 720x480 / VGA: 640x480 / CIF: 352x240
Frame Rate		30, 15, 7.5, 1 FPS
Video Quality	Quality	Very High, High, Normal, Low, Very Low
Motion Detection	Sensitivity	High, Medium, Low
Audio	G.711	2-Way
Connection Users	Max	10 Users at Unicast Mode
Alarm I/O		Input : 2, Output : 2
Alarm Event	Alarm Input	Image transfer : FTP, E-mail
		Notification: notify to viewer
		Alarm Out
	Motion Detection	Recording : SD Card
		Image transfer : FTP, E-mail
		Notification : notify to viewer
	Schedule	Alarm Out
		Recording : SD Card
		Image transfer : FTP, E-mail
		Recording : SD Card

IP installer	IP address	IP installation function (XP, VISTA support)
Software Upgrade	Firmware upgrade	Firmware upgrade by web browser
Access Level	Login access Level	Administrator, Operator, User
Time setting	Time setting	NTP Time Sync, Time Zone, Day light Saving Setup
Language	Language	Multiple Language GUI support
SDK	HTTP API	CGI Commands: Provides functionality to control cameras and set/retrieve internal parameter values.
	Windows API	Windows API for viewing data streams from network camera.
Hardware	Input/Output sockets	Video Out(BNC), Power(2-Pin Term), RJ-45, SD Card Slot , 2Pin, GND ,Day/night In)
Environmental	Operating Temperature	14° ~ 122°F (-10° ~ 50°C)
Conditions	Humidity	20% ~ 85% RH
Power	Power Requirement	AC24V(60/50Hz)/DC12V/ PoE
	LED Indicator	3 ea
Physical Specification	Dimensions (WxHxD)	3.12 x 2.31 x 6.62 in / 79.3 x 58.73 x 168.27 mm
	Weight	0.99 lb / 0.45 kg
	Body Color	Silver