

CEILING DOMES - Surface Mount Dome SM12



DESCRIPTION

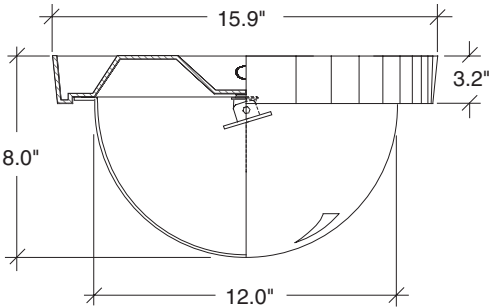
The SM12 is designed to house a single, 1/3" standard body camera. It's manufactured from black, ABS high-impact plastic, and has a 12" acrylic dome (clear or tinted) and black liner. The housing can easily be installed to the surface of any ceiling. The SM12 can be used indoors or in outdoor areas under protective overhangs.

FEATURES

- Single swivel head camera bracket
- Low-profile, contemporary design with recessed flanges; aesthetically pleasing and well-suited for offices, hallways, and conference rooms
- Optional tinted dome option provides discreet surveillance while only eliminating one F-stop of light
- Easy access for service and installation, with convenient access to camera
- Tamper resistant fasteners

ARCHITECTURAL/ENGINEERING SPECIFICATIONS

The SM12 shall mount to any overhead surface. The housing shall be constructed of black ABS high-impact plastic. It shall measure 15.9" in diameter x 9" high, and accept a wide variety of 1/3" standard body cameras. The dome shall measure 12" in diameter and 6" deep. A liner is included.



7B
Indoor Ceiling
Mount Domes

MODELS

- SM12CL** - 12" diameter indoor/outdoor dome with fixed camera swivel, liner, and clear lower dome with tamper-proof fasteners.
- SM12TL** - 12" diameter indoor/outdoor dome with fixed camera swivel, liner, and tinted lower dome (1 F-stop light reduction) with tamper-proof fasteners.
- SM12CLH** - Same as SM12CL; equipped with 24 VAC heater/thermostat.
- SM12TLH** - Same as SM12CL; equipped with 24 VAC heater/thermostat.

SHIPPING SPECIFICATIONS

Model	Unit Weight	Shipping Weight	Shipping Box Dim.
SM12	6 lbs	6 Grd/17 Air	17 x 17 x 11

* Shipping weights depend on box dimensions.