

# STANDARD OUTDOOR DOMES - SuperDome™ SDW12/16



## DESCRIPTION

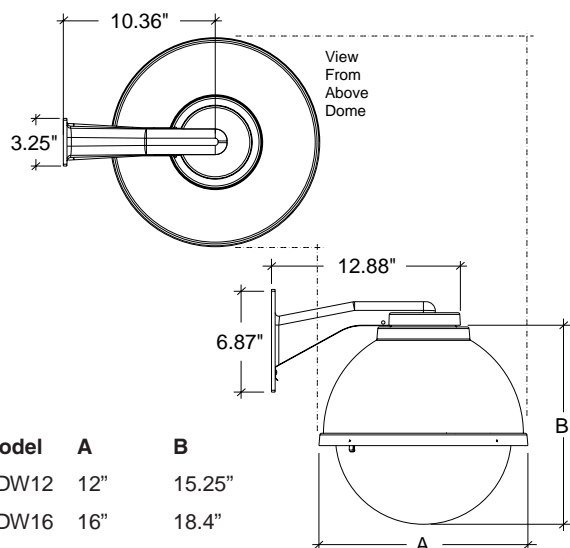
The SuperDome™ is a general purpose dome camera housings. This low-cost unit is available with either a 12" or 16" dome and comes with a factory installed wall mount. It features a 1/4", UV rated, ABS plastic upper dome and a 1/8" cell-cast acrylic lower dome. The 12" model allows two fixed cameras, the 16" unit allows three. Either can be fitted with a scanner or pan/tilt/zoom.

## CERTIFICATIONS



## ARCHITECTURAL/ENGINEERING SPECIFICATIONS

Each unit in the SuperDome™ general purpose, outdoor housing series shall be equipped with a pre-attached, universal wall mount, and shall be available with either a 12" or 16" clear or tinted (1 F-stop light reduction) lower dome made from 1/8" cell-cast acrylic. The upper dome shall be 1/4" ABS plastic. Optional items shall include: 24 VAC, 2.08 Amp heater and surge protector; 24 VAC, .16 Amp blower and surge protector, or heater/blower combination; 355° integral pre-wired 12 degree per second or variable speed pan/tilt; presets; continuous 360° rotation pan/tilt; and CoaxLynx™ receiver/driver and its options.



Model	A	B
SDW12	12"	15.25"
SDW16	16"	18.4"

## MECHANICAL SPECIFICATIONS

**Max. Pan Speed** - 125°/sec

**Max. Tilt Speed** - 60°/sec

**Min. Pan Speed** - .5°/sec

**Min. Tilt Speed** - .5°/sec

**Tilt** - Worm gear drive

**Pan** - Spur gear drive

**Max Camera and Lens Weight** - 3 lbs

**Max Camera Width** - 3 5/16"

**Wire feed-through via gold-on-gold slip ring**

**\*NOTE:** Coaxial cable should always be 95% copper core/copper shield. Coax wire should be used with 3 piece solder or crimp-on BNC connectors only.

## FEATURES

- Security fasteners standard equipment
- Space for up to 3 fixed cameras  
SDW12 MCL - 8" 1 camera/ 7" 2 camera  
SDW16 MCL - 12" 1 camera/ 8" 2 cameras/7" 3 cameras
- Optional heater/blower, and surge protection
- Available with scanner
- Available with fixed speed or variable speed pan/tilt drives
- Available with clear or tinted dome
- Inner liner available as option

## ELECTRICAL SPECIFICATIONS

**Power Source** - 24 VAC

**Power Consumption** - 52 vA (camera not included)

**Pan/tilt Power Consumption** - 16 vA (max) - .625 Amps P/T

**Maximum load** - 5 lbs balanced

**Weight** - 3.25 lbs (1.47 kg)

### WITH PAN/TILT RECEIVER

**(VLPT355/360 fixed speed versions)**

**Power Source** - 24 VAC

**Power Consumption:**

w/o heater - 30 Watts (max) - 1.25 Amps

w/heater/blower - 82 Watts (max) - 3.4 Amps

### Inputs

Video - 1 Vpp/75 ohm composite video

Control - Multiplexed on video signal

### Outputs

Camera Power - Supplied by receiver/driver (9 watts max)

Pan/tilt - 24 VAC, 15 watts

Autopan - User selectable autopan

Lens Function - +/- 6 VDC or +/- 12 VDC, 150 mA max.  
(user selectable)

### WITH PAN/TILT RECEIVER

**(VLPT400 variable speed versions)**

### Inputs

Power - 24 VAC, 30 vA

Alarm Contact - (4) momentary contacts 24 VAC, NO/NC (selectable)

Video - 1Vpp/75 ohm composite video\*

### Control Signal

VLPT400 - 4 wire RS422 or 2 wire RS485

### Outputs

Camera Power - 24 VAC, 9 vA, (also selectable) 12 VDC

Lens Power - 5-10 VDC

Aux - Latching/non-latching

Alarm Output - Contact closure

RS232 Control - Optional for camera control only

(Continued on next page)

## MODELS

- SDW12C** - Outdoor housing with fixed camera bracket, clear lower dome and universal wall mount
- SDW12CB** - SDW12C with 24 VAC blower
- SDW12CHB** - SDW12C with 24 VAC heater/blower/thermostat
- SDW12CK** - Outdoor housing with light-duty scanner, clear lower dome, universal wall mount, 24 VAC heater/blower and surge protector. *(This model is only available in the 12" dome.)*
- SDW12CL** - SDW12C with liner
- SDW12CLHB** - SDW12CL with 24 VAC heater/blower/thermostat
- SDW12CS/12** - Outdoor housing with 355° integral, pre-wired, high speed, 12° per second pan/tilt; clear lower dome; universal wall mount; 24 VAC heater/blower and surge protector
- SDW12CSL** - SDW12CS with liner
- SDW12CSR/12** - SDW12CS/12 with internal receiver driver. Use with CoaxLynx™ controller
- SDW12CZXL** - Outdoor housing with clear lower dome, liner, variable speed continuous 360° rotation pan/tilt, and RS485 protocol
- SDW16C** - Outdoor housing with fixed camera bracket, clear lower dome and universal wall mount
- SDW16CB** - SDW16C with 24 VAC blower
- SDW16CHB** - SDW16C with 24 VAC heater/blower/thermostat
- SDW16CL** - SDW16C with liner
- SDW16CLHB** - SDW16CL with 24 VAC heater/blower/thermostat
- SDW16CS/12** - Outdoor housing with 355° integral, pre-wired, high speed, 12° per second pan/tilt; clear lower dome; universal wall mount; 24 VAC heater/blower and surge protector
- SDW16CSL** - SDW16CS with liner
- SDW16CSR/12** - SDW16CS/12 with internal receiver driver. Use with CoaxLynx™ controller
- SDW16CZXL** - Outdoor housing with clear lower dome, liner, variable speed continuous 360° rotation pan/tilt, and RS485 protocol

**NOTE:** Replace "W" with "P" for a pendant mount  
 Replace "C" with "T" in model number for tinted dome  
 (1 F-stop light reduction)

## OPTIONS/ACCESSORIES

- ACA2** - Aluminum corner mount adapter
- APM3** - Aluminum existing pole mount bracket
- CA2** - Corner mount adapter
- FM1** - Fixed camera bracket
- P1600** - 16' pole
- PA2** - Roof top wall bracket
- PESO1** - Adapter bracket for Pelco PS7 Scanner (SDW12 only) and Pelco 270 and 280 Pan/Tilts (SDW16 only)
- PM3** - Existing pole bracket
- PRM30G** - Aluminum extended parapet mount (for pendant mount)
- SCRW2000** - Roof top bracket
- SRM1500** - Side wall roof bracket
- VLC2/VLC3/VLC36** - Hardwire controls (no receiver needed)
- VLC200T** - CoaxLynx™ desktop controller
- VLC485** - RS-485 controller
- WM20G** - Aluminum gooseneck wall mount
- WM30G** - Aluminum parapet mount (for pendant mount)

**NOTE:** If the application calls for more than one camera in the unit, an additional FM1 bracket will need to be purchased for each additional camera.



Shown with multiple cameras

## SHIPPING SPECIFICATIONS

Model	Unit Weight	Shipping Weight	Shipping Box Dim.
SDW12	15 lbs	30 Grd/60 Air	23 x 23 x 22
SDW16	15 lbs	30 Grd/60 Air	23 x 23 x 22

\* Shipping weights depend on box dimensions.

Product specifications are subject to change without notice.

