



## Key Features

### Compact and Durable

Cross drilled corrosion resistant coated galvanized steel reflector and stainless steel bracket mounts maximize rugged mechanical aspects and minimize wind loading to provide users with maintenance free operation

### High Performance Radiation Pattern

Superior RF and Ground Plane Design to Ensure Maximum Directivity and Minimizes Leakages

### Low Loss High Efficiency Radiation System

Exceptional VSWR ranging from 1.3 to 1.5 to maximize electrical to wireless power transfer

### Low Side and Back Lobe Radiation

Easier Frequency Coordination and Interference Mitigation

### Low Visibility

Neutral Color and Sleek Design Minimizes Visual Impact to Deployment Area

### Work Well in Highly Congested Area

Antenna Directivity Optimizes License Free Radio Spectrum to Provide More Aggregated Bandwidth Per Deployment Area

### Center Pin Grounded

Minimize Transient Voltage Protection for Connected Radio System

## General Technical Specifications

### Electrical

Max Power Input	15W
Polarization	Linear
Impedance	50 ± 5 Ohms
VSWR	1:1.3 Max

### Mechanical

Connector Type	N Female
Temperature Range	-20°C to +60°C
Random Color	Gray Corrosion Resistant Enamel
Random Material	ABS
Reflector Material	Galvanized Steel
Mounting Method	Vertical
Max Pole Size	2 inches

# AirEther™ SA Series

## 2.4GHz and 5GHz Sector Antennas

Inscape Data Corporation, the leading outdoor network appliance company, offers a broad range of high gain antennas, 9dBi to 29dBi, for every major license free air interface technology with broad deployments in all regions. The portfolio of Inspace Data sector antenna system includes all-weather antennas for outdoor long range license free radios and WiFi systems in bands ranging from 2.4GHz up to 6 GHz. The high performance and low loss sector antennas are built ground up with focus on reliability, durability, and performance. Inspace Data sector antenna offers the best return on investment for the license free long range wireless industry.

## Applications



### WIRELESS NETWORK SOLUTIONS

Building to building wireless connectivity or point to multipoint wireless bridges, Inspace Data outdoor antenna system provides high reliability and performance for the most demanding wireless networking applications



### WIRELESS INFRASTRUCTURE

Complete outdoor wireless infrastructure antenna solutions from Inspace Data catering to wireless internet service providers, municipalities, SCADA, wireless machine to machine, telemetry, institutions, campuses, and more. Inspace Data is your one-stop source for high performance economical antenna solutions



### CARRIER SOLUTIONS

Inscape Data antenna solutions provide the best in class transmission electrical characteristics between 2.4 GHz and 5.8 GHz. The high performance characteristics keep the carrier wide-band high capacity backhaul and wireless transmission networks moving in the most extreme weather conditions



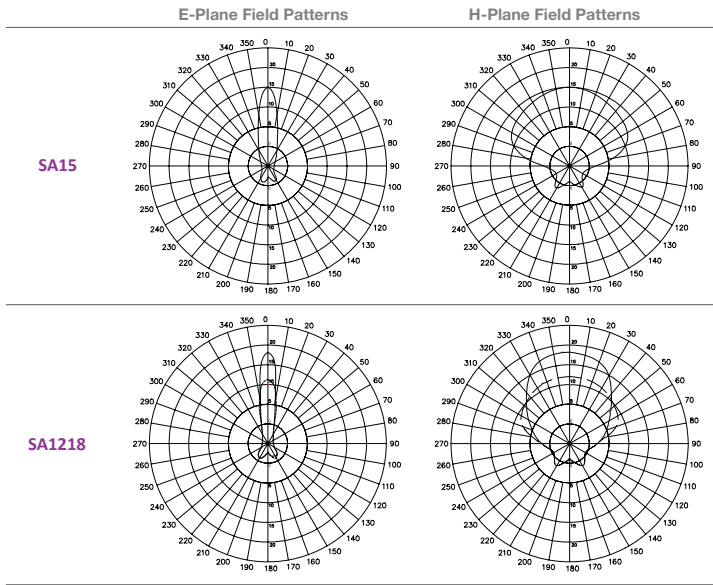
### WIRELESS VIDEO SECURITY

For hard to wire video applications, Inspace Data outdoor antenna system economically transmit and receive sensitive security images to secure parking lots, property perimeter, and even the most remote places

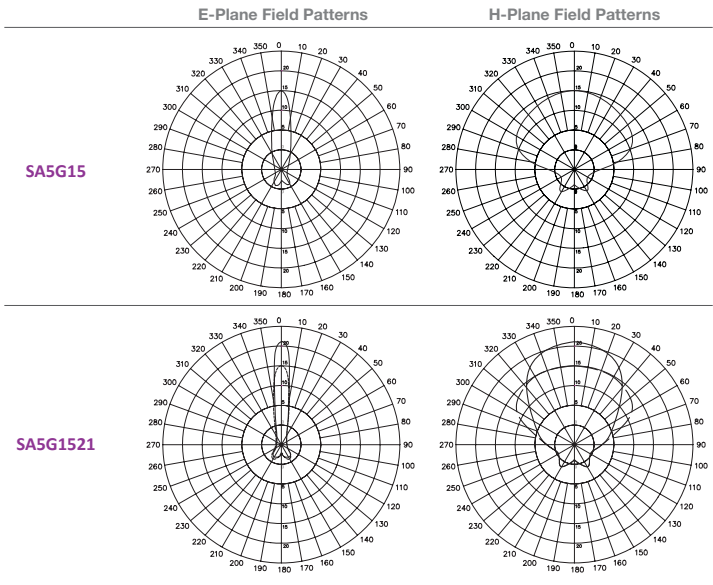
## System Configurations

Band Model Name	2.4GHz			5GHz	
	SA15	SA1218	SA1821	SA5G15	SA5G1521
<b>Electrical</b>					
Frequency Range	2400~2500MHz	2400~2500MHz	2400~2500MHz	5100~5900MHz	5100~5900MHz
Gain (dBi)	15 dBi	12~18 dBi	15~21 dBi	15 dBi	15~21 dBi
3 dB Horizontal Beamwidth	120°	60°~120°	60°~120°	120°	60°~120°
3 dB Vertical Beamwidth	10°	10°	10°	10°	10°
Front-to-Back Ratio	30dB	25dB	30dB	30dB	30dB
<b>Mechanical</b>					
Dimensions	865 x 130 x 65mm	370 x 130 x 65mm	865 x 130 x 65mm	370 x 130 x 65mm	370 x 130 x 65mm
Weight	3.4kg	3.05kg	4.84kg	2.4kg	3.09kg

2.4GHz SA Patterns



5GHz SA Patterns



Accessories

AC100

1M Low Loss Antenna Cable,  
N-Male to N-Male

LSS0001

0~6GHz High Performance  
RF Lighting Arrestor

Package Contents

- Sector Antenna
- Wall and Pole Mount Kit
- Antenna Literature

Bracket Information

Bracket Type

Swivel Wall & Pole Mount

Max Length

52cm

Min Length

20cm

Weight

470g

Swivel Angel

+/- 90° (H)  
+/- 40° (V)

Material

Powder Coated Steel

Dimensions

TYPE X

TYPE Y

Frequency & Part No.	Dimension a x b x c	Antenna Type
2.4GHz - SA15	865x130x65mm	X
2.4GHz - SA1218	370x130x65mm	Y
2.4GHz - SA1821	865x130x65mm	Y
5GHz - SA5G15	370x130x65mm	X
5GHz - SA5G1521	370x130x65mm	Y