

The **RCR-REX** is a dual technology, request-to-exit sensor used for secure door egress and door access control. The RCR-REX combines the power of passive infrared and Doppler range-controlled radar technologies to provide the industry's most secure request-to-exit sensor.

Historically, request-to-exit sensors have not been used in sensitive areas because they are easy to defeat. With the RCR-REX, dual technology requires that both the unit's PIR sensor and RCR sensor detect intrusion activity to trigger the internal relay. For maximum protection, adjust the radar so that the curtain is above the floor; objects slipped under the door will not activate the sensor, making it virtually impossible to defeat.

The sensor has two detection patterns, the infrared PIR and the Range Controlled Radar, that are adjusted independently. Radar range can be adjusted from 3 to 15 feet (1 to 4.5 m) and can be set to just above the floor if desired.

Two Form C output relay contacts are used to switch a door lock and shunt a door switch. The RCR-REX's flexible lock relay may be set to either Fail Safe or Fail Secure mode for operation when the unit is not powered.

The user can determine lock relay activation times with easy-to-change

DIP switch settings. Factory default is 1/2 second, but can be adjusted to 1, 2, 4, 8, 16, 32, or 64 seconds.

When the RCR-REX's sounder is turned on, it produces an audible tone to warn of door-open-too-long (DOTL) conditions, depending on settings. Fifteen seconds before the timer closes the lock relay contacts and opens the monitor relay contacts to send an alarm signal. Closing the door silences the sounder, while new movement restarts the timer and resets the sounder. A beeping tone will sound at the end of the external input signal if the door is open.

An LED indicator turns red for the duration of the lock relay time when motion is detected and flashes twice per second during the 20-second warm-up period. It turns yellow when the radar detects motion, and green with the passive infrared detects motion.

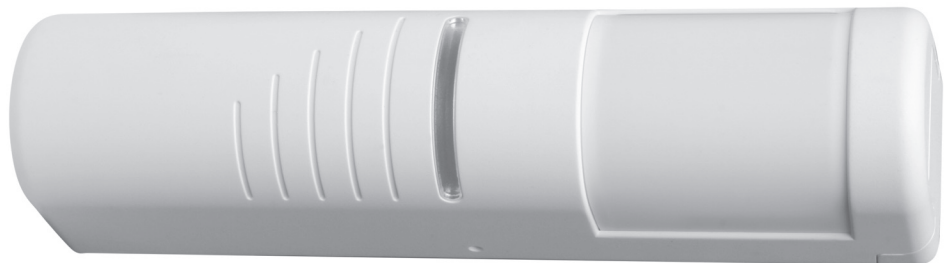
A tamper switch identifies when the housing cover is opened.

Features

- Proprietary GE dual technology—request-to-exit uses both RCR and PIR to detect intruders
- Incorporates two Form C output relay contacts
- Tamper switch detects device open
- Includes mask for easy adjustment of PIR field of view
- Optional single gang wall plate
- Swing open design allows easy adjustment
- Housing available in white, gray, or black
- Built-in adjustable sounder for door position monitoring
- Wall or ceiling mount
- Dual relay outputs

RCR-REX

Dual technology request-to-exit motion sensor





Specifications

Americas

503-885-5700
888-GE-SECURITY
(437-3287)
faxback 800-483-2495
info@gesecurity.com
www.gesecurity.com

Asia

tel 852-2907-8108
fax 852-2142-5063

Australia

tel 61-3-9259-4700
fax 61-3-9259-4799

Europe

tel 32-2-725-11-20
fax 32-2-721-86-13

Latin America

tel 305-593-4301
fax 305-267-4300

Electrical

- Voltage: 12 to 30 VAC/VDC
- Current: 23 mA typical, 28 mA max. @ 12 VDC; 15 mA typical, 17 mA max. @ 24 VDC; 31 mA typical, 38 mA max. at 12 VAC; 26 mA typical, 29 mA max. at 24 VAC
- Time delay: 1/2, 1, 2, 4, 8, 16, 32, 64 sec. at $\pm 10\%$, selectable
- Loop type: Open or Closed
- Max. loop rating: 2 A @ 30 VDC
- Alarm output: DPDT (Form C)
- Tamper output: 50 mA @ 30 VDC
- Wire gauge: AWG 14 to 22 (18 to 22 recommended)

Features

- Radar frequency: 5.8 GHz
- Range, depth: 3 to 15 ft. (0.9 to 4.57 m) adjustable
- Range, width: 7.9 ft. (2.4 m)
- Range, PIR: 15 ft. (4.6 m), adjustable

Environmental

- Operating temperature: -20 to 120°F (-29 to 50°C)
- Relative humidity: 0 to 95% noncondensing
- RFI immunity: 10 V/m @ 80 MHz to 2 GHz
- Static immunity: 10 kV
- Lightning immunity: 2.3 kV @ 1.4 J

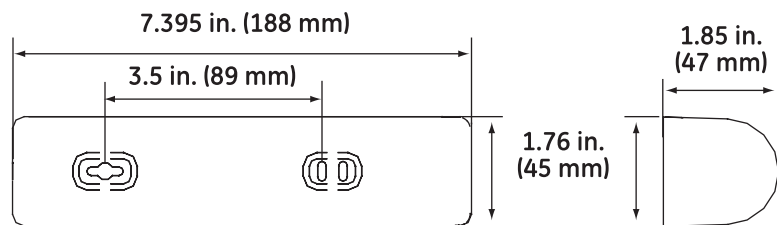
Physical

- Dimensions (HxWxD): 1.76 x 7.395 x 1.85 in. (45 x 188 x 47 mm)
- Weight: 9.2 oz. (261 g)
- Housing material: ABS plastic
- Colors: White, black, gray
- Mounting height: 7 to 15 ft. (2.13 to 4.57 m) typical

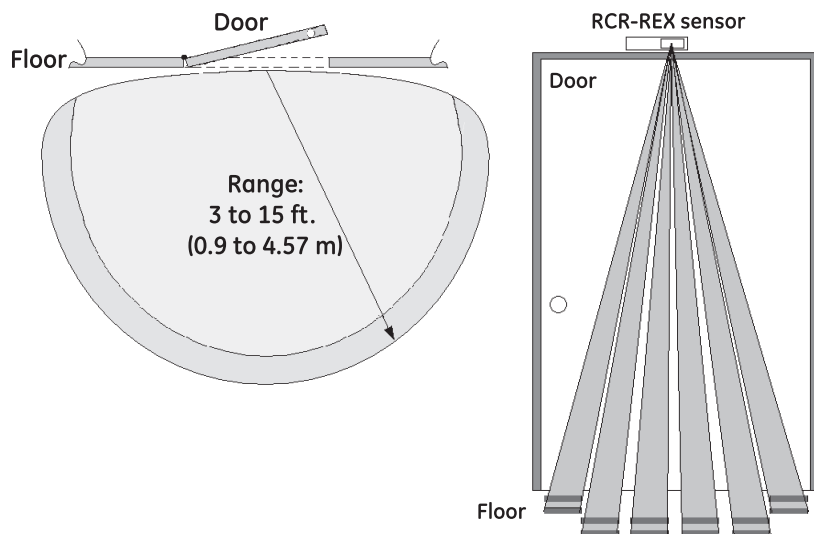
Regulatory

- FCC, CE, UL, CUL

Dimensions



Coverage Patterns



Ordering information

- RCR-REX-W Dual technology request-to-exit motion sensor, DPDT, Form C, includes wall plate, white
- RCR-REX-B Dual technology request-to-exit motion sensor, DPDT, Form C, includes wall plate, black
- RCR-REX-G Dual technology request-to-exit motion sensor, DPDT, Form C, includes wall plate, gray

Accessories

- RCR-WP-W Single gang wall plate, 2.25 x 8.375 in. (57 x 213 mm), white
- RCR-WP-B Single gang wall plate, 2.25 x 8.375 in. (57 x 213 mm), black
- RCR-WP-G Single gang wall plate, 2.25 x 8.375 in. (57 x 213 mm), gray