

Fixed Focal Length

L28DC4P

1/3" 2.8mm DC type Auto-Iris with 4-pin, CS-mount
Compatible with 1/3" & 1/4" Cameras

Focal Length:	2.8mm
Maximum Relative Aperture:	1:1.3
Iris:	F1.3~Approx. F360 With ND Spot Filter
Mount:	CS-mount (Adjustable Lens Position)
Minimum Object Distance:	0.1m (from front vertex)
Angular Field of View:	1/3": 92° x 71.7° 1/4": 71.7° x 51.5°
Optical Back Focal Distance:	8.5mm (in air)
Operation:	Focus: Manual Iris: IG (Auto-Close System)
Operation Voltage:	Close to Open: Less than 3V Open to Close: More than 0.5V
Operation Temp:	-10 ~ +50°C (+14 ~ 122°F)
Filter Size:	None
Size, Approx. Weight:	ø27 x 38.5 x 31.7mm (w/h/d), 50g (Approx. ø1.1 x 1.5 x 1.2in., 1.8oz.)

[Download Specifications](#)



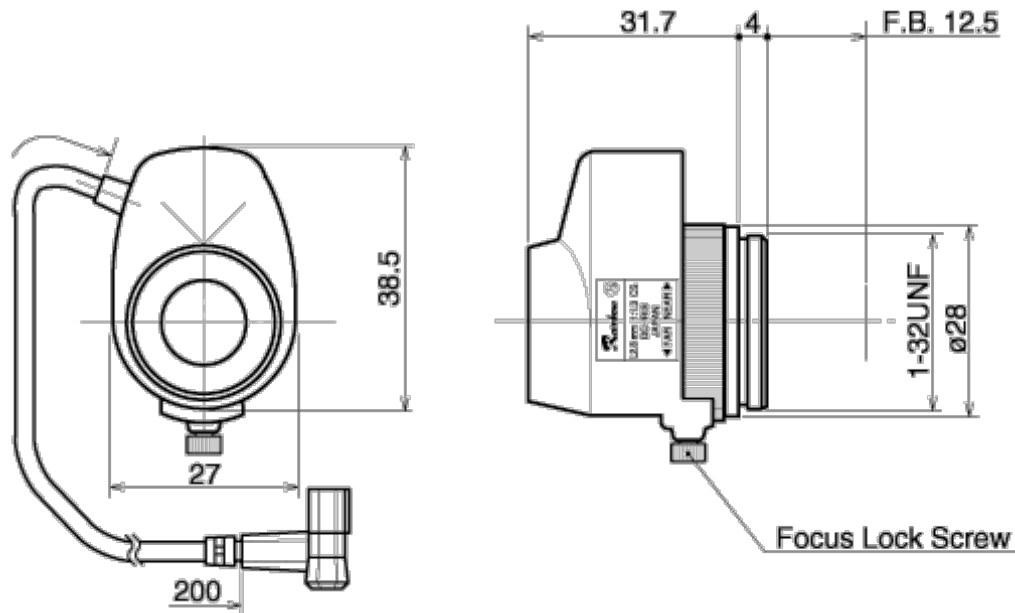
English
[Acrobat PDF](#)

Español
[Acrobat PDF](#)

[Product Photo](#)



[Click for larger image](#)



Camera Connector Wiring



Pin	Signal
1	Brake - *
2	Brake + *
3	Drive +
4	Drive -

* Also referred to as DAMP, CONTROL, or DUMP

