

## PERSONAL SURVEILLANCE SOFTWARE (PSS)

Pro Surveillance Software allows Mac users a method to remotely monitor their DVR that is not browser-dependent. PSS is compatible with Mac OSX 10.6 and 10.7.

### INSTALLING PSS

Installation of PSS on your Mac is straightforward. If you are using Mac OSX 10.7 or later, you will need to install XQuartz due to the changes Apple made in this version of their operating system. XQuartz, also known as X11, is Apple's version of a helper program that supports the DVR's network connection to your computer as well as PSS' graphical user interface (GUI). It is available for free from CNet.com at:

[http://download.cnet.com/XQuartz-X11/3000-2094\\_4-10912185.html](http://download.cnet.com/XQuartz-X11/3000-2094_4-10912185.html)

XQuartz should be installed prior to installing PSS. But, if you've installed PSS and found that it doesn't work smoothly or at all, then install XQuartz and then reinstall PSS to ensure smooth operation.



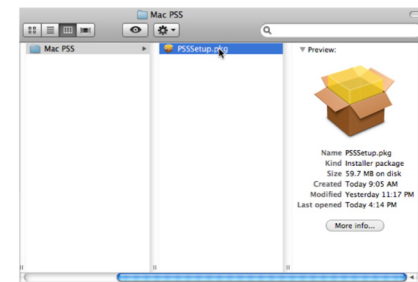
**IMPORTANT!** Red boxes with this icon indicate warnings. To prevent possible injury or damage to the product, read all warnings before use.



**NOTE!** Text in blue boxes with the Information icon offer additional guidance and explanations about how to make the most out of your system.

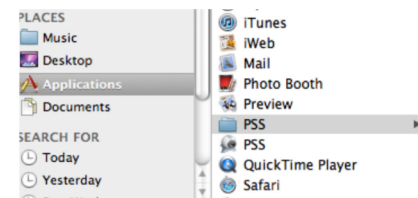
Every effort has been made to make this manual easy to understand and follow. However, if you should run into any difficulties during any of these operations, we are here for you.

**STEP 1.** Double click on the PSSSetup.pkg icon in the **PSS for Mac** folder to extract and install the program.



PICTURE 1

**STEP 2.** Once installed, the program will appear in the **Applications** folder along with a PSS folder.



PICTURE 2

**STEP 3.** Double click on the icon to launch the program.



PICTURE 3

USING PSS

When you launch PSS, it will launch X11 and run inside of that program, showing up as “X11” in the application bar at the top of the screen. As X11 is launching at the same time, it may be necessary to double click the icon again if it the log in screen doesn’t appear.

Once you’ve launched PSS, a login screen will appear. Enter the User Name and Password in the appropriate fields. The default user name and password are *admin* and *admin*.



PICTURE 4



**IMPORTANT!** We strongly recommend that you modify your password after you first log in for improved security.



PICTURE 5

The areas of the PSS display screen each have their own functions:

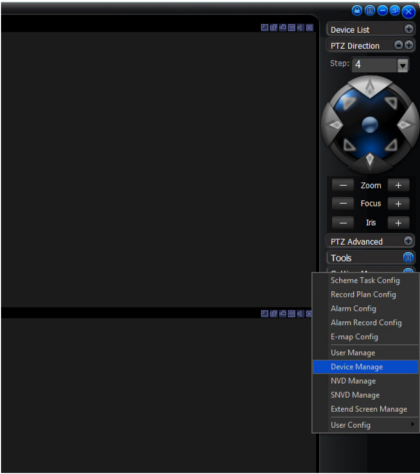
Item #	Area	Function
1	Real-Time Monitor	Live viewing of selected channels plus playback of recorded video.
2	Window Controls	Close, minimize, lock or switch the program's window.
3	Tool Bar	Controls include: Device List, PTZ Direction, PTZ Advanced, Tool and Setting Manager.
4	Image View Options	Controls for number of channels viewable at once plus other options
5	Function Buttons	Controls and settings for various DVR functions.
6	DVR Status	Shows the status of the DVR, the hard drive and the cameras

CONNECTING TO THE DVR

Before you can begin to monitor the DVR, you must first connect to it. You must have already set up your DVR for remote access as described in the **Remote Monitoring Guide**.

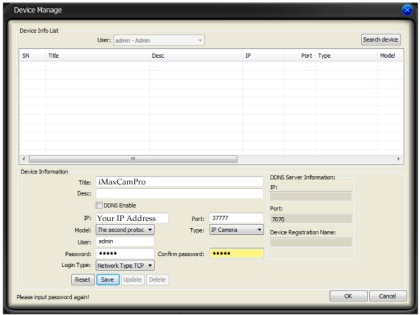
**STEP 1.** Click on the blue **Full Menu** icon to the right of the **Setting Manage** button in the **Tool Bar** on the right side of the display.

**STEP 2.** Select **Device Manage** to open the **Device Manage** window.



PICTURE 6

**STEP 3.** Click the **Search Device** button to locate systems on the same local network as the computer. Or, if you're connecting over the Internet, enter the router's public IP or DDNS address and then press **Add**. You obtained the IP address when configuring your DVR for remote access.



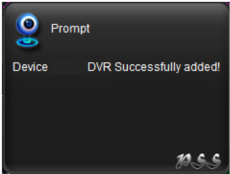
PICTURE 7

You will also need to enter the port number, your user name and password (which are the same that you use to log into the DVR directly). You can also give the DVR an identifying name and you can add a note in the Description field.

You can also add other types of devices such as a network backup storage drive using this window. Leave **Login Type** at its default Network Type TCP setting.

You can return to this window to update your passwords, add or remove other devices and make network access changes if need be.

A prompt will pop up at the bottom right of the screen to indicate that the DVR has been added to the program.



PICTURE 8

Step 4. The DVR will now appear in the **Device List** at the top of the **Tool Bar**. Click on the device name to expand the listing and you can add cameras.



PICTURE 9

**STEP 5.** Choose the screen view format you wish to use from the row of icons below the screen and then click on the segment of the screen (see **Picture 11**) where you want to place the first camera. Then, click on the camera number in the Device List to add that camera. Repeat by selecting a new area. The area highlighted in green is the current camera view. Clicking on a camera icon while a camera view is highlighted will replace that view with the channel you just selected.



PICTURE 10



PICTURE 11

Alternatively, you can click and drag a camera from the list on the right onto the desired channel view on the screen. Dragging a camera onto a channel already being displayed will replace that view with the new one.

IMAGE VIEW OPTIONS

This row of buttons along the bottom of the Real-Time Monitor area allow you to set how you will view the video feeds in addition to how many screens will be displayed simultaneously. Some settings will display more channels than a single DVR can connect to, but if you are controlling multiple iMaxCam DVRs using PSS you will be able to display the video feeds from multiple DVRs simultaneously. When you do not have as many cameras as channels displayed, the empty channels will remain grayed out and the area above each screen where the device name, stream and frame rate would be displayed will remain blank instead.



PICTURE 12

The first three buttons in the row deal with image quality and size, while the remaining buttons will configure the display to show 1-64 images.

Symbol	Button	Function
	Image Quality	This raises or lowers the quality of the image
	Latency/Fluency	Allows you to prioritize image quality versus smoothness of the video
	Full Screen	Selecting this will expand the entire display to fill the full screen, hiding all the controls.

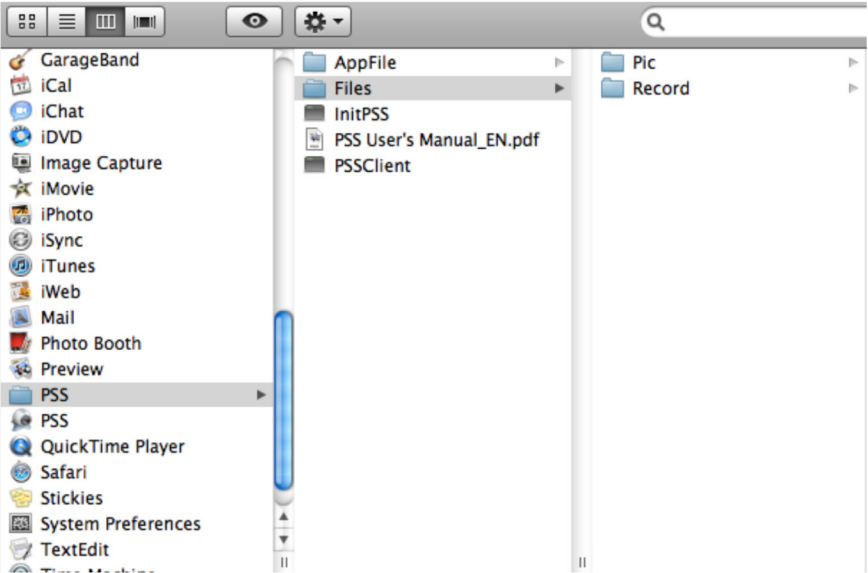
In the case of the **Image Quality** and **Latency/Fluency** buttons, only the channel highlighted in green will be affected.

In multi-screen mode, a channel can be clicked and dragged to another location. This is useful in those modes where one or two screens are larger than the others. The channel being replaced will move to the old location of the one that was moved.

Double clicking on a channel will bring that to single screen mode. Double clicking on it again will return to the previous multi-channel format.

SAVING FILES

PSS saves still and video images to a folder within the PSS folder located within your Application folder. This is where all files saved using PSS will be located.



PICTURE 13

This folder, labelled “Files” contains separate folders for the images and video recordings. It may be convenient for you to make a shortcut to this folder for easier access, say from your Desktop.

To make a shortcut, called an “Alias” in the Mac OS, you may;

- Click on the folder and then select “**Make Alias**” from the Finder’s **File** menu.
- Click on the folder and then press Command+L.
- Right click on the folder and select “**Make Alias**” from the pop-up list of options.

Once you have created the alias, you can place it on your desktop or into another folder where you can access it using any of the normal methods.



PICTURE 14

While it is possible to redirect the file save path within the Options settings within the Config button at the bottom of the PSS screen (See **Function Buttons** on page 15), it is not recommended as there are limits as to where the program is able to save files.



REAL-TIME MONITOR

Live monitoring and recorded video playback takes place in the Real-Time Monitor section of the window. The number of screens being viewed at once is set with the Image View Options at the bottom of the screen. You can, at any time, double-click on a channel in multi-view mode to make it a single-screen view. Double-clicking on the screen will return it to its place in the multi-view display.



PICTURE 15

At the top of each channel's video display, there is a set of data and a set of six function buttons.



PICTURE 16

The data in the upper left shows the DVR's name, the stream rate for that channel as well as its frame rate.

The function buttons allow you to perform operations with and within the display. Each button will only affect the channel it is attached to. Other channels will not be affected.

Symbol	Button	Function
	Digital Zoom	Select this button (it will highlight in white) and then click and drag within the video image to zoom in on that section. Clicking on the button again will return you to the original view.
	Multi-Screen/ Single Screen View	This will switch between a multi-screen or single screen view of that video.
	Local Record	When this button is selected, you will begin recording it to your computer
	Snapshot	This will take still images of the video which will be saved according to your settings in Pic Path
	Audio	Turns audio on or off if this channel has audio connected to it. This does not have any relationship to the system's audio
	Close Video	Ends the video display for that channel

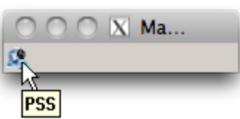
WINDOW CONTROLS

The buttons at the top right corner of the PSS display window allow you to lock the display, offer shortcuts to certain functions and let you toggle normal window operations such as full-screen, minimize and close the display.



PICTURE 17

Symbol	Button	Function/Options
	Lock	Locks the application. You will have to re-enter your password to resume control of the program.
	Full Menu	Access Password settings, Log Out and shortcuts to function and menu buttons.
	Minimize	Hides the PSS display while keeping PSS running. A small tab will still be viewable. Double-clicking on the PSS icon in that tab will restore the PSS display.
	Switch	Switch to and from full-screen display
	Close	Closes PSS. You will have to confirm the closure by entering your password. You can also quit out of X11 to close PSS.



TOOL BAR

This section of the PSS display, located on the right end of the screen, contains many of the controls for on-screen viewing.

Device List

This is where you access the DVR(s) you wish to view and control from the software. This function was covered earlier in this section under “Connecting to the DVR.”

This is also where you access the DVR itself to change settings.

**STEP 1.** In **Device List**, right click on the DVR you wish to access.

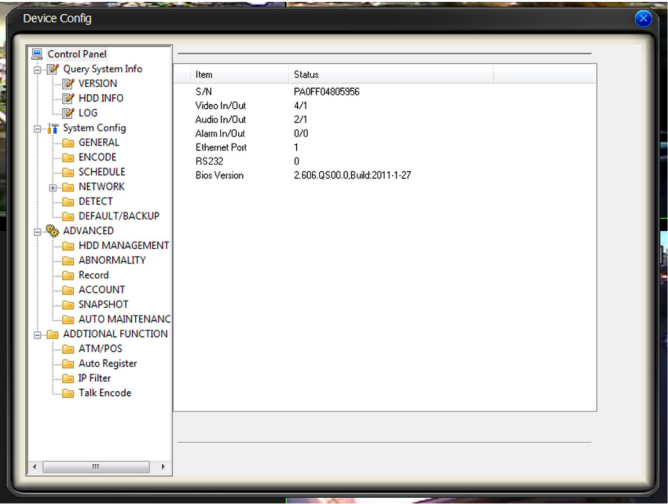
**STEP 2.** Click on **Advanced** in the menu.

**STEP 3.** Click on **Device Config** in the submenu.



PICTURE 18

The **Device Configuration** menu gives you access to the **Setting** and **Advanced** menus on the DVR. You can make changes or add new settings in the same manner as if you were at the DVR itself. These operations are covered in **Chapters 3, 4** and **5** of the **User Manual**.



PICTURE 19

PTZ Direction

This operates in the same manner as the PTZ controls on the DVR itself as shown in **Controls in Section 6.2**.

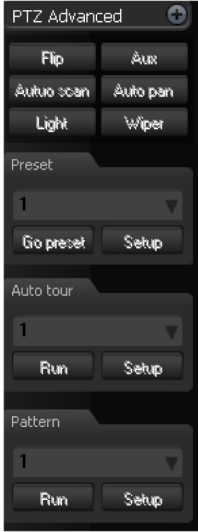
By clicking on the padlock icon at the top of this menu, you can separate this control from the rest of the display and position it anywhere on the screen. Clicking on the padlock returns it to its position in the main display.



PICTURE 20

PTZ Advanced

Like the main PTZ controls, this control panel replicates the operations found on the DVR. The user can activate presets, tours and patterns plus other features that are dependent upon the model of PTZ camera in use.

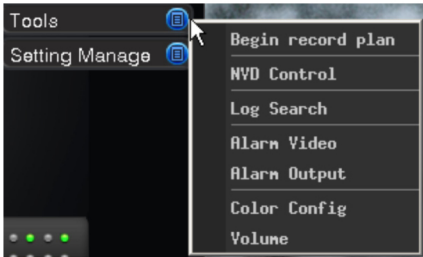


PICTURE 21

**Tool**

This menu gives you access to several functions and features:

- Begin Recording Plan** - Activates a pre-defined local recording plan.
- NVD Control** - Opens a proprietary video playback and decoding window.
- Health Report** - Shows the status of all connected devices.
- Log Query** - Shows records of when PSS was accessed and by who as well as any system failures.
- Alarm Video** - Opens a pop-up window displaying selected channels when an alarm is activated.
- Alarm Output** - Open or close all alarm outputs.
- Color Config** - Adjust hue, balance, contrast and saturation.
- Volume** - Control for any connected microphones.

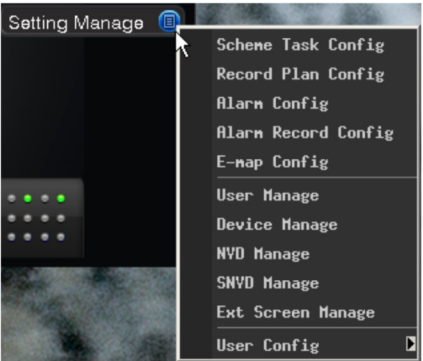


PICTURE 22

**Setting Manage**

Clicking on the blue icon on this tab reveals additional settings which parallel their counterparts on the DVR itself. However, these settings only apply to local recording from the DVR onto the computer and do not override the settings on the DVR.

Of note are three additional features - **E-map Configuration**, **User Management** and **User Configuration**. The first allows you to upload an image of a map which you can use to mark the location of cameras. This is utilized in the **E-Map** tab at the bottom of the screen. **User Management** allows you to define what PSS-specific rights users have and you can import or export those settings for use on other computers running PSS through **User Configuration**.



PICTURE 23

**FUNCTION BUTTONS**

The five function buttons; **Task**, **Alarm**, **Playback**, **E-map** and **Configuration**, are located at the bottom of the display.



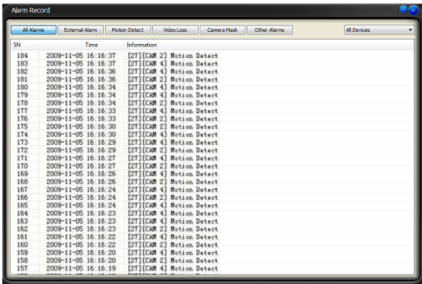
PICTURE 24

**Task**

This allows you to run a pre-configured operation - set in the **Scheme Task Configuration** button under the **Setting Manage** menu in the **Tool Bar**.

**Alarm**

This log shows all the events recorded by the DVR when motion is detected or an external alarm triggers recording.



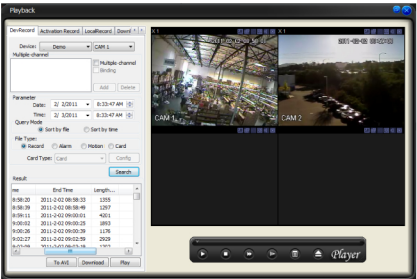
PICTURE 25

This is where you access the recordings made on the DVR or on your computer. There are five tabs in this section which allow you to play back video, show when alarms were activated, download video from the DVR to your computer and convert the native .dav files to the standard .avi format.

This window controls the playback of video recorded on the DVR itself. It operates in the same manner as the Playback function on the DVR described in **Section 4.5 Search and Playback** in the manual.

**STEP 1.** Enter the date and time range for the event you're searching for. You can also select the type of event - Manual, Alarm or Motion as well as enable multi-channel playback up to four channels.

**STEP 2.** Click on Search and the files that meet your criteria will be listed at the bottom of the window.



At this point, you can either play back or save the files to your computer by using the buttons at the bottom of this window. You can also export and save the files in the .avi format so they can be viewed by conventional video playback software. It should be noted that files saved in .avi format will be larger than those saved in the .dav format with the .avi file expanding up to 40 times the size of the original video record in some cases.

In addition to the normal playback buttons, the Playback Bar at the bottom of the window lets you view the play list of selected files or open a file saved onto your computer for playback.

This area allows you to search for events that were recorded when triggered by an alarm, video loss, motion detection or a camera being covered (masked). It works in the same manner as the Device Record search, above and you have the same playback and file saving options.

This tab covers files saved locally to your computer that were recorded manually, activated by an alarm (including motion detection), a card (such as a point of sale card) or other methods.

These two tabs allow you to check on the progress of your files download from the DVR as well as the files being converted to .avi format. You can stop either process if it is taking too long.

This brings up a map image - set in the **E-Map** tab under the **Setting Management** menu described above.

The map (a .jpg file) can show a building's layout, or in the case of multiple DVRs, a wider region. It is useful for determining where an event is taking place.

Right-clicking in the E-Map window will allow you to open the same configuration window found by using the tab.

Dragging the map in the big window will allow you to move between areas as shown in the larger scale map in the upper left corner.

Within the E-Map window itself, use the directional arrows to navigate around the map.

Double clicking on a camera's icon on the map will open the live video feed in the Real Time Viewer.

Right-clicking on a camera's icon will allow you to view a camera's name and the name of the device it is connected to. You can also open that camera's video feed in a separate pop-up window.

Configuration - This last button has two features; **Password Change** and **Options**. **Password Change** allows you to change your user password. Clicking on **Options** opens a new window.

