

# PP200 Mount

## PARAPET MOUNT, LARGE PAN/TILT

### Product Features

- Low Cost
- Aluminum Construction
- Supports up to 175 lb (78.75 kg)
- For Use with Pan/Tilt and Environmental Enclosure
- Built-in Pan/Tilt Mounting Arm; Requires Pan/Tilt Adapter
- Mounts to Inside of Parapet; Minimum Parapet Height 18 Inches (45.72 cm)

The **PP200** parapet mount is designed to mount a pan/tilt with environmental enclosure (such as our PT1250P and EH5723-1) to the inside of a parapet.

The **PP200** mounts on the inside of the parapet and can be rotated a full 360 degrees by simply loosening the U-bolts securing the tube assembly. Its unique design allows it to be positioned anywhere on the parapet, including corners.

The **PP200** enables you to install and service equipment safely on rooftops.

Because the pan/tilt mounting arm is built-in, you need only to purchase the appropriate pan/tilt adapter (PA2000 for medium duty pan/tilts or PA2010 for heavy duty pan/tilts).



**PP200 SHOWN WITH ENCLOSURE AND PAN/TILT**



# TECHNICAL SPECIFICATIONS

## MODEL

PP200 Parapet mount for pan/tilt with environmental enclosure; minimum parapet height 18 inches (45.72 cm)

## RELATED PRODUCTS

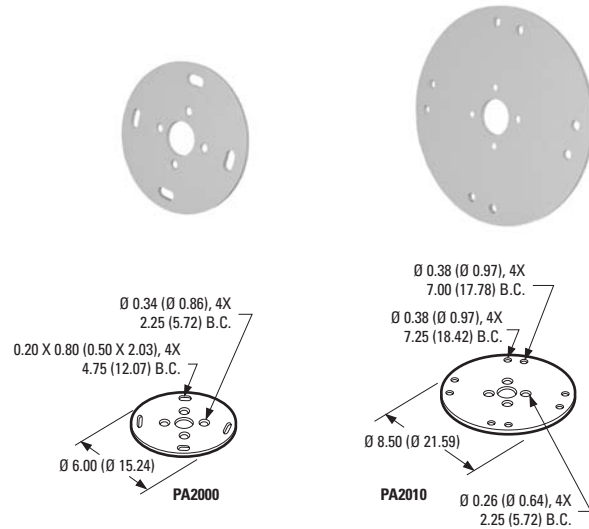
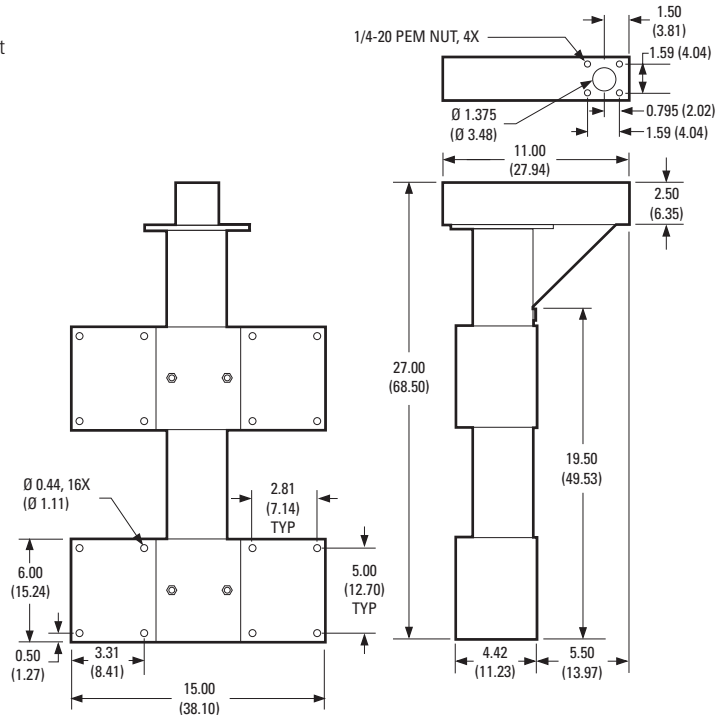
PA2000 Mount adapter for PT570P, PT570-24P, and PT680-24P medium duty pan/tilts  
 PA2010 Mount adapter for PT1250DC, PT1250P, PT1280P, PT1280SL, and PT1260EX heavy duty pan/tilts

## MECHANICAL

Positioning Adjustment 360°

## GENERAL

Construction Aluminum  
 Finish Gray polyester powder coat  
 Maximum Load 175 lb (78.75 kg)  
 Mounting Method Secure PP200 to parapet wall with 16 fasteners (not supplied); minimum 3/8-inch (10 mm) diameter recommended  
 Unit Weight 11.73 lb (5.32 kg)  
 Shipping Weight 15 lb (6.80 kg)



NOTE: VALUES IN PARENTHESES ARE CENTIMETERS; ALL OTHERS ARE INCHES