

TECHNICAL DATA SHEET - Straight Column Flat Panel Ceiling Mount for 32" to 50" Flat Panel Displays



MODEL: PLCM-UN1

**PLCM-UN1**

The Straight Column Ceiling Mount offers a straight column from the ceiling attachment point to the flat panel display. The straight column ceiling mount is ideal for sports facilities, airports, lobbies or retail environments.

Features:

- Includes a PLP-UN1 adapter plate (portrait or landscape)
- 0° to 20° adjustable tilt and 360° swivel
- Screen mounts vertically or horizontally
- Uses standard 1-1/2" – 11.5 NPT schedule 40 pipe
- Additional length can be added for lowering
- Theft-resistant security fasteners secure the screen to the mount
- Sold without ceiling plate
- Complete detailed installation instructions for wood and concrete structures

Accessories:

- Ceiling Plate required (sold separately). Various options available. Other ceiling accessories can be ordered separately to allow mounting to I-beams, cathedral ceilings, trusses, etc.

Dimensions:**Weight:**

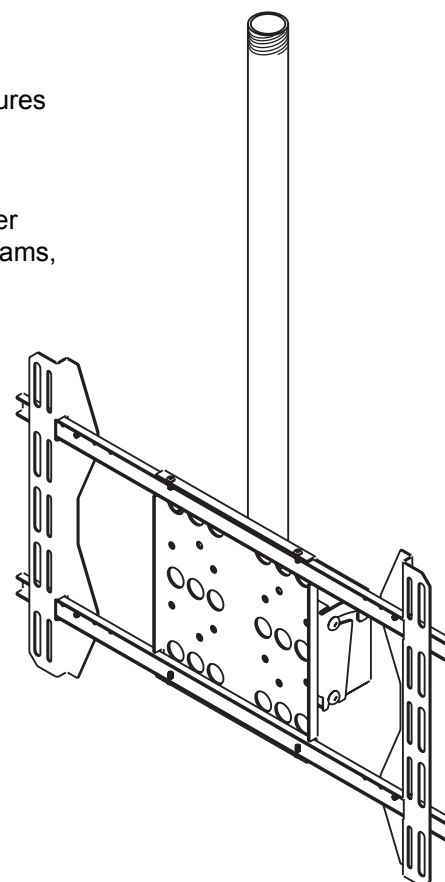
20.2 lb (9.2 kg)

Shipping weight:

27.4 lb (12.4 kg)

Maximum Load Capacity:

125 lb (56.7 kg)

Shipping Carton dimensions:**L** = 36-3/4 in (933 mm)**W** = 11-1/2 in (292 mm)**H** = 3-3/4 in (95 mm)

ARCHITECTS SPECIFICATIONS

The Straight Column Flat Panel Ceiling Mount shall be a Peerless model **PLCM-UN1** and shall be mounted where indicated on the plans. It shall be constructed of heavy gauge cold rolled steel, steel tubing and finished with scratch resistant Black Fused Epoxy. It shall feature 360° swivel and 0° to 20° range of tilt. Assembly and installation shall be done according to instructions provided by the manufacturer.

Peerless Industries, Inc.

2300 White Oak Circle, Aurora, IL 60502

(800) 865-2112 Fax: (800) 359-6500

www.peerlessmounts.com

ISSUED: 07-31-06 SHEET NO: 200-9830-4 07-25-11

© 2011 Peerless Industries, Inc. All rights reserved.

Peerless is a registered trademark of Peerless Industries, Inc.

All other brand and product names are trademarks or registered trademarks of their respective owners.

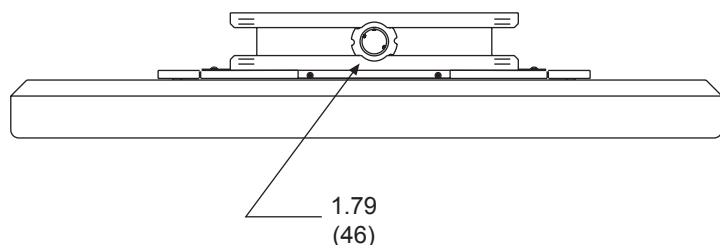
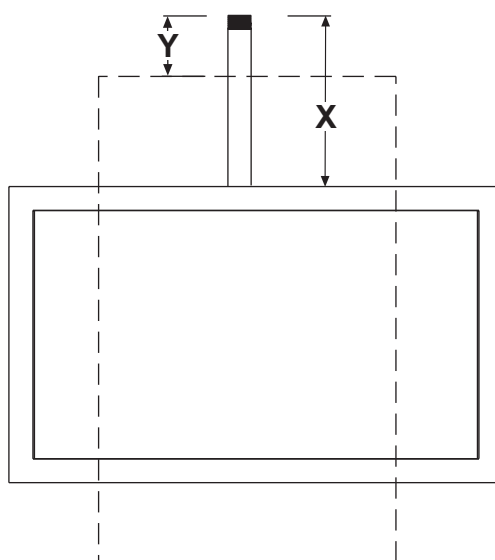
TECHNICAL DATA SHEET**MODEL: PLCM-UN1**

ALL DIMENSION = INCH (UNLESS OTHERWISE SPECIFIED)
(MM)

A = 34.26" (870 mm) when used with 33" (838 mm) extension column

Landscape: X = A - (1/2 (height of screen)) - 2.68" (68 mm)

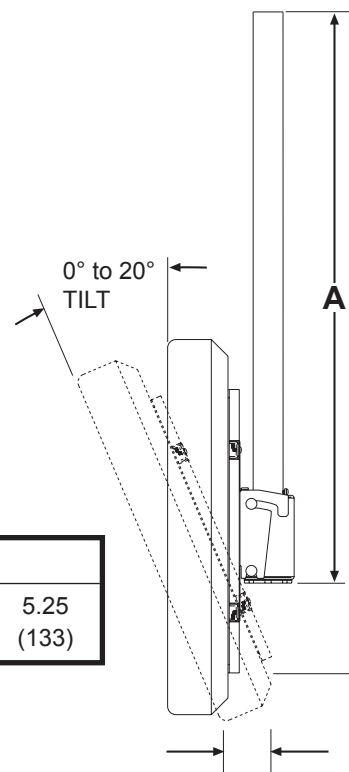
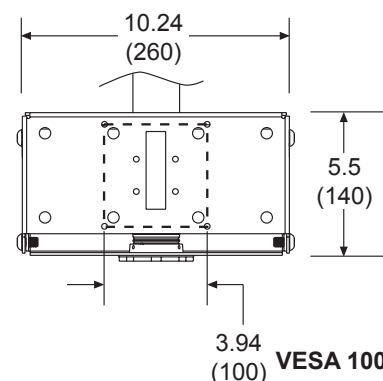
Portrait: Y = A - (1/2 (width of screen)) - 2.68" (68 mm)

**TOP VIEW**

Landscape: X = A - (1/2 (height of plasma)) - 2.68" (68 mm)

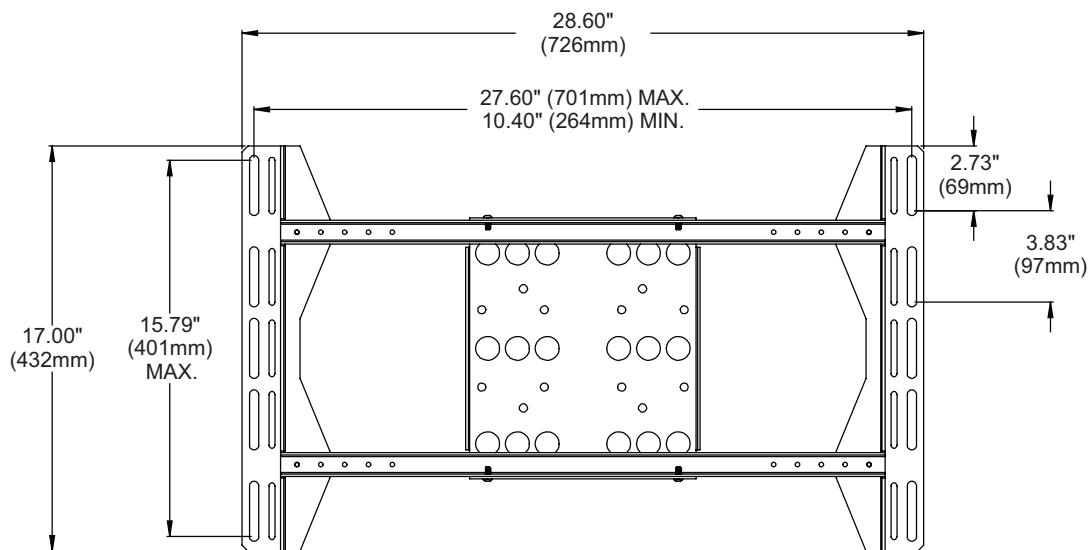
Portrait: Y = A - (1/2 (width of plasma)) - 2.68" (68 mm)

	RANGE	
R	3.75 (95)	TO 5.25 (133)

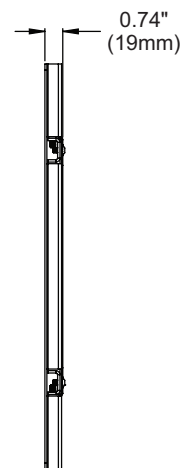
**SIDE VIEW****FRONT VIEW**
TILT BRACKET

TECHNICAL DATA SHEET

MODEL: PLCM-UN1



FRONT VIEW



SIDE VIEW