



PB26

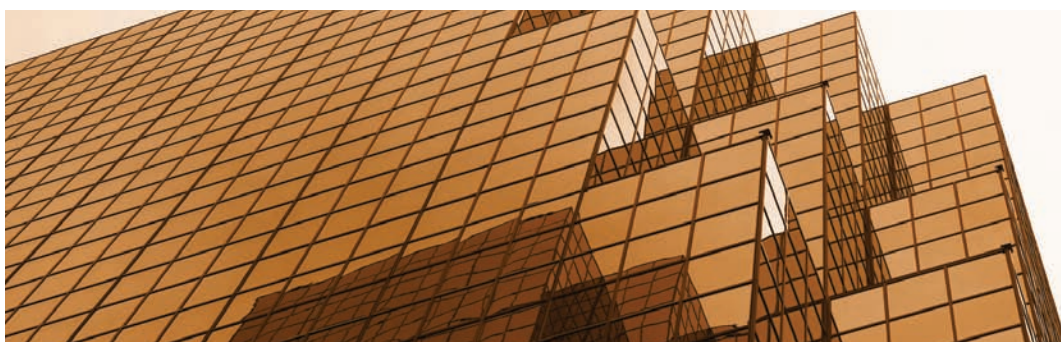
Aluminum Power Boxes: Standard & Wireless Communication

Moog Videolarm's PB26 Series of outdoor power boxes provide an economical solution for supplying your camera system with electrical current, while offering ample space for the inclusion of additional user electronics.

Constructed out of an aluminum NEMA box enclosure, the PB26 Series has been designed to complement Moog Videolarm's wall mount camera housings / domes by simply bolting to the wall mount back. This simple yet effective design reduces installation and servicing times. Available in two distinct model types: Standard and Wireless.

Key Features

- Provides 4 amps of power at 24Vac (220/115Vac input converting to 24Vac and 96W output)
- Designed for direct conduit connections
- Pole mounting clips included
- Provides adequate space for additional user electronics
- PB26LG transmits data wireless via a cellular router
- PB26LG-SP transmits data wireless via an embedded Sprint module
- Mounts directly to Moog Videolarm outdoor wall mount camera enclosures



Standard Power Box:



PB26

Outdoor power box with 220/115Vac input converting to 24Vac and 96W output. Ample space to include additional user electronics

Wireless Power Boxes:



PB26LG

Wireless Power Box System

Includes cellular router and power supply. Cellular broadband adapter sold separately. 110/220Vac input. Designed to work with Moog Videolarm's IP Ready Series of IP camera housings



PB26LG-SP

Comes with an embedded Sprint module

ACCESSORIES:



EOF2N

Ethernet over multi-media fiber



IPRS01

IP Reset – Monitors IP devices and resets power if lock up has been detected



FDW75C2N

Standard outdoor dome enclosure



ACH13HBN15

Outdoor environmental housing
* Comes with WM1500 wall mount

SPECIFICATIONS:

Mechanical Specifications

Size (h*w*d):	9.863" X 4.048" X 14.32"	(251 x 103 x 364mm)
Weight:	19 Lbs.	(8.6 Kg.)
Construction	Back Box:	Aluminum

Environmental Specifications

Operating Temperature:	-20°F to 120°F	(-29°C to 49°C)
------------------------	----------------	-----------------

CELLULAR BROADBAND MODEM

Network Compatibility

IEEE 802.3u compliant Cable and DSL modems with dynamic IP, static IP, PPPoE, PPTP, L2TP connection types

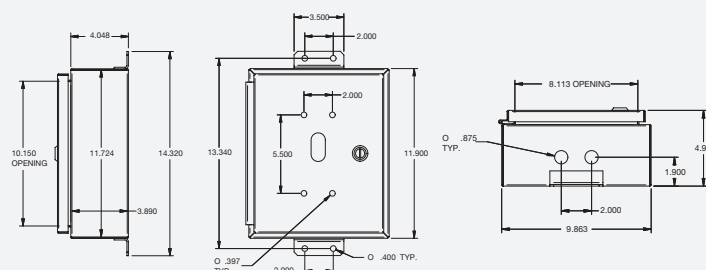
Buttons/Switches

SGNL (signal strength display), Reset button Configuration mode / IP Pass-Through mode

LED Indicators

Power, Ethernet LAN Status, USB Modem, Express Card Modem Signal Strength

Architectural Drawings



Dimensions are in inches