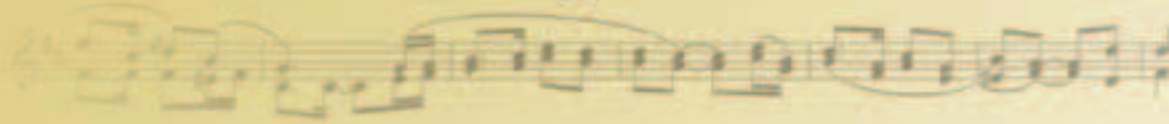


**NÜVÖ®**

The Sound of LiVing.



AccentPLUS® Speakers



**Discover Your Home's Unique Accent.**

AccentPLUS® speakers by NuVo create a soundscape as individual as your style.



ONE

**AccentPLUS®<sub>1</sub>**

## AccentPLUS®1

*Uncompromisingly clean sound at a price that's music to your ears.*

Acoustic clarity doesn't have to come at a high price. For an extraordinary listening experience, NuVo offers the AccentPLUS®1 in-wall and in-ceiling speakers. AccentPLUS®1 speakers deliver crisp, clear audio throughout your home, perfect for casual listening and background ambience.

For impressively full, impeccably clean sound and an audio experience that is never compromised, you can trust AccentPLUS®1 speakers to fill every room of your home with bright, rich music.



*A durable, butyl rubber surround provides years of high performance. The polypropylene cone delivers superior sound reproduction and the pivoting silk-domed tweeter produces precise, high-range tones.*

### **AccentPLUS®1 Features:**

- Durable butyl rubber surround
- 6.5 or 8 inch Polypropylene cone
- 30° pivoting silk-domed tweeter
- 12 dB crossover
- Anti-debris basket
- Paint friendly, low-profile aluminum grill



# ONE

# AccentPLUS®1 Outdoor

***Enjoy the sound of living everywhere you call home...  
inside and out.***

Discover what makes the great outdoors so great. AccentPLUS®1 Outdoor loudspeakers from NuVo deliver an outstanding performance in any environment, so you can take the sound of living to your patio, sunroom, or pool...anywhere you enjoy outdoor living at home.

---

## **AccentPLUS®1 Outdoor Features:**

- Weather and UV-resistant for use in all climates
- Polyethylene cabinets with honeycomb array for increased rigidity
- Bituminous acoustic damping inner lining
- 6.5 or 8 inch Polypropylene cone
- Polyetherimide tweeter
- Steel U-bracket for wall mount and attachable bookshelf foot



*The weather-resistant, UV-resistant design allows you to enjoy the legendary AccentPLUS®1 sound in the outdoor areas of your home. Inside and out, on-wall mount or bookshelf placement, the unique honeycomb cabinet design will strengthen output, enriching your surroundings with powerful audio.*



# AccentPLUS®1

SYSTEM	NV-AP16C	NV-AP16CS	NV-AP18C	NV-AP16I	NV-AP18I
Description:	6.5" Ceiling Speaker with Co-axial Pivoting Tweeter	6.5" Stereo Ceiling Speaker with Dual Fixed Tweeter	8.0" Ceiling Speaker with Co-axial Pivoting Tweeter	6.5" In-Wall Speaker with Pivoting Tweeter	8.0" In-Wall Speaker with Pivoting Tweeter
Power Rating:	50W	50W	60W	50W	60W
Impedance:	8 ohm	8 ohm x 2	8 ohm	8 ohm	8 ohm
Efficiency:	91dB 1W/1M	91dB 1W/1M	92dB 1W/1M	91dB 1W/1M	92dB 1W/1M
Frequency Response:	50Hz-20kHz	50Hz-20kHz	50Hz-20kHz	50Hz-20kHz	50Hz-20kHz
Tweeter Crossover:	12dB / Octave; 4kHz	12dB / Octave; 4kHz	12dB / Octave; 4kHz	12dB / Octave; 4kHz	12dB / Octave; 4kHz
Woofers Crossover:	None	None	None	12dB / Octave; 4kHz	12dB / Octave; 4kHz
Dimensions (HxWxD):	9" Diameter x 3.75" (228mm Diameter x 96mm)	9" Diameter x 3.75" (228mm Diameter x 96mm)	10.75" Diameter x 4.375" (272mm Diameter x 112mm)	12" x 8.75" x 3.75" (306mm x 220mm x 95mm)	14.125" x 10" x 4" (358mm x 256mm x 101mm)
Cutout Dimensions:	8" (204mm)	8" (204mm)	9.75" (248mm)	11.125" x 7.75" (284mm x 198mm)	13.25" x 9.125" (336mm x 232mm)
Depth:	3" (75mm)	3" (75mm)	3.375" (86mm)	3" (75mm)	3.375" (86mm)
<b>WOOFER</b>					
Magnet:	10 oz (80mm x 30mm x 15mm)	10 oz (80mm x 3mm x 15mm)	20 oz (100 mm x 45mm x 15mm)	10 oz (80mm x 30mm x 15mm)	20 oz (100mm x 45mm x15mm)
Voice Coil:	1.0" (25mm) Polyimide Film	1.0" (25mm) Polyimide Film	1.5" (38mm) Polyimide Film	1.0" (25mm) Polyimide Film	1.5" (38mm) Polyimide Film
Cone:	Etched Polypropylene	Etched Polypropylene	Etched Polypropylene	Etched Polypropylene	Etched Polypropylene
Surround:	Butyl Rubber	Butyl Rubber	Butyl Rubber	Butyl Rubber	Butyl Rubber
Dust Cover:	Polypropylene	Polypropylene	Polypropylene	Polypropylene	Polypropylene
<b>TWEETER</b>					
Magnet:	Neodymium	Neodymium	Neodymium	Neodymium	Neodymium
Dome:	20mm Silk	2 x 13mm Mylar	25mm Silk	20mm Silk	25mm Silk
Type:	Pivoting 30 degrees	Fixed Position	Pivoting 30 degrees	Pivoting 30 degrees	Pivoting 30 degrees

Uncompromisingly clean sound at a price that’s music to your ears.



# Specifications



## AccentPLUS® 1 Outdoor

SYSTEM	NV-AP160W (White) NV-AP160B (Black)	NV-AP160SW NV-AP160SB	NV-AP180W NV-AP180B	NV-AP180SW NV-AP180SB
Description:	6.5" Outdoor Loudspeaker	6.5" Stereo Outdoor Loudspeaker	8" Outdoor Loudspeaker	8" Stereo Outdoor Loudspeaker
Power Rating:	50W	40W x 2	80W	50W x 2
Impedence:	8 ohm	8 ohm x 2	8 ohm	8 ohm x 2
Efficiency:	88dB 1W/1M	88dB 1W/1M	90dB 1W/1M	90dB 1W/1M
Frequency Response:	60Hz-20kHz +/-3dB	60Hz-20kHz +/-3dB	50Hz-20kHz +/-3dB	50Hz-20kHz +/-3dB
Tweeter Crossover:	12dB	12dB	12dB	12dB
Woofer Crossover:	N/A	N/A	N/A	N/A
Cabinet Material:	Mineral Filled Polyethylene	Mineral Filled Polyethylene	Mineral Filled Polyethylene	Mineral Filled Polyethylene
Grill Material:	Powder Coated Aluminum	Powder Coated Aluminum	Powder Coated Aluminum	Powder Coated Aluminum
Bracket Material:	Powder Coated Steel	Powder Coated Steel	Powder Coated Steel	Powder Coated Steel
Dimension: (HxWxD)	13" x 7.625" x 7.5" (330mm x 193mm x 190mm)	13" x 7.625" x 7.5" (330mm x 193mm x 190mm)	15" x 9.5" x 10" (382mm x 240mm x 258mm)	15"x9.5"x10" (382mm x 240mm x 258mm)
Depth w/Bracket:	8" (205mm)	8" (205mm)	9.75" (250mm)	9.75" (250mm)
Weight (Unit):	7.50 lbs (3.40kg)	7.50 lbs (3.40kg)	10.50 lbs (4.80kg)	10.50 lbs. (4.80kg)
WOOFER				
Magnet Structure:	Ferrite, 13oz (370g) Flat Back Plate	Ferrite, 13oz (370g) Flat Back Plate	Ferrite, 17oz (480g) Flat Back Plate	Ferrite, 17oz (480g) Flat Back Plate
Voice Coil:	1" (25mm) Polyimide Film	1" (25mm) Polyimide Film	1.5" (38mm) Polyimide Film	1.5" (38mm) Polyimide Film
Cone:	6.5" (165mm) Polypropylene	6.5" (165mm) Polypropylene	8" (203mm) Polypropylene	8" (203mm) Polypropylene
Surround:	Butyl Rubber	Butyl Rubber	Butyl Rubber	Butyl Rubber
Dust Cover:	Polypropylene	Polypropylene	Polypropylene	Polypropylene
TWEETER				
Magnet:	Neodymium	Neodymium	Neodymium	Neodymium
Dome:	PEI (Polyetherimide), .75" (19mm)	PEI (Polyetherimide), .75" (19mm)	PEI (Polyetherimide), 1" (25mm)	PEI (Polyetherimide), 1" (25mm)
Type:	Fixed Position	Fixed Position	Fixed Position	Fixed Position

