

## Network Device Server – NDS-1111-PW

### Product Overview



The Network Device Server enables you to use UPStart with a PIM-R, over the internet, without a dedicated on-site computer. You do not need to be an IT expert, know how to forward a port, or open up a firewall!

The Network Device Server along with the RAPS configuration software allows management, control and access to a customer's PulseWorx system via UPStart while eliminating the need to be on the jobsite.

Access or connecting to a PIM-R, or other serial device, at a remote location, over the internet or LAN has never been easier. PCS employs approved industry standard TCP/IP and telnet protocols, to allow the Network Device Server, Model NDS-1111-PW, to have all the functionality necessary in a very small footprint.

Partnering with Systech®, PCS has jointly developed a full service software solution called RAPS. This easy to use software package combined with the reliable and dependable NDS hardware; creates a total remote automation management solution, for both residential and industrial applications, anywhere you have a network connection.

The Network Device Server, a serial-to-IP device and the RAP software, now provides secure access to any serial device at a remote site via the internet while keeping your client's existing network intact. No end-user configuration is required, simply plug the pre-configured hardware into the customer's network and quickly secure access to the attached serial device thru our RAP Server.

RAPS is robust, secure and user friendly, saving system integrators and installers time and money. It provides customers with a safe, trouble-free solution for remote automation management access with the highest degree of secure customer service available.

The Network Device Server is designed to be an integral part of PCS's PulseWorx Lighting Control System; it is also compatible with other manufacturers' UPB devices.

### Features

- **Cost Effective Service Call**  
No need to roll a truck when you can remotely connect from your office or home
- **Firewall Friendly**  
No modification to network router or ports to open
- **SSL Encryption**  
Provides a secure layer of network communication security with authentication, encryption and data integrity
- **Network Security**  
No access is available to the end-user's network, serial communications only.
- **Easy to Install**  
Connect the NDS to a network, register the NDS with your account on the RAP Server.
- **Always on**  
NDS makes a secure connection to the RAP Server. This connection never goes away unless you end the relationship.
- **Scalable**  
Support any number of devices located anywhere in the world.
- **Windows Compatible**  
XP, XP Pro, Vista Pro
- **Simple Configuration**  
Web based interface and registration allows serial ports to appear as local Windows COM ports.
- **Interoperability**  
Supports generic (raw) TCP/IP access to serial ports without requiring special protocols or processing.
- **5 Year Warranty**



## Network Device Server – NDS-1111-PW



### Ordering Information

- **Part Number**  
NDS -1111-PW Network Device Server  
Remote Access Port Software  
Included

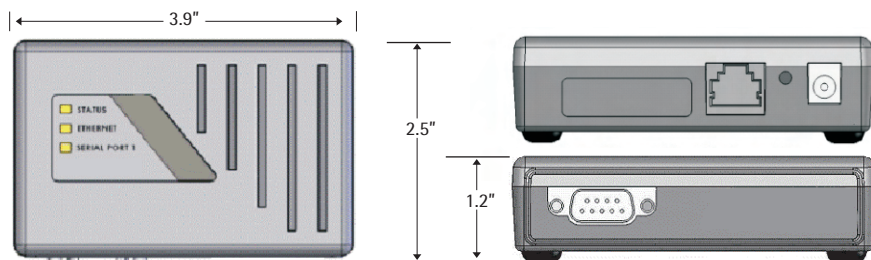
### Installation

- **Ethernet**  
Connect the NDS to the network or router with a standard RJ-45 connector Ethernet cable.
- **Powerline**  
PIM-R connects to the NDS-1111- PW via a standard RS-232 cable and plugs into a standard receptacle.
- **Mounting**  
NDS-1111-PW is a table top unit or may be mounted to a wall or shelf using the included mounting bracket, Power Supply plugs into a standard receptacle.

### Additional Information

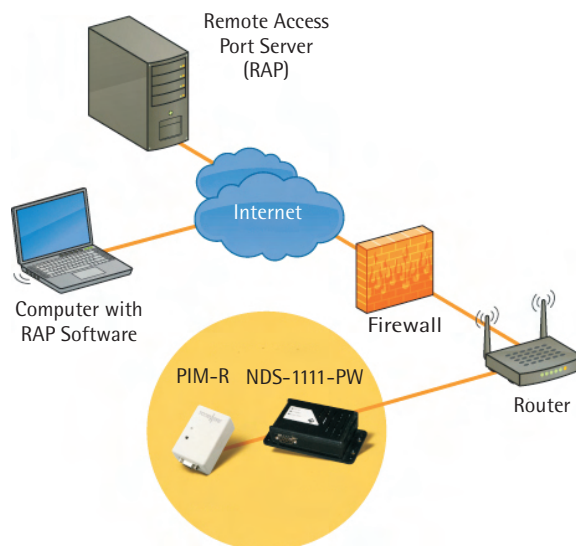
- **Warranty**  
Five-Year Limited Warranty
- **Testing and Compliance**  
Meets UL CSA and FCC requirements  
(file numbers available upon request.)

### Dimensions



### NDS-1111- PW

### Wiring Diagram



#### Colors



Black

#### Model Number

#### NDS-1111-PW

SDRAM	16 M bytes
Ethernet Connection	10 Mbps over 10 BaseT (Up to 115.2K baud)
Connections	DB-9 & RJ45
Mounting	Tabletop or Wall mount with Mounting Bracket
Input Power	External 120 to 240 VAC power supply provides +5 VDC regulated
Dimensions	3.9 x 2.5 x 1.2 in
Weight	8.4 oz.
Operating Temp	32 F to 104 F
Humidity Range	10% - 90% non-condensing
UPC Code	8119760-2689