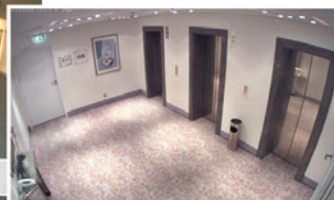


90° room surveillance



3 elevators in an overview

Fits In.Watches Out.

Inconspicuous surveillance with state-of-the-art technology. The D22 FixDome from MOBOTIX adapts perfectly to any task. Exchangeable lenses, various mounting and configuration options including vandalism set support unlimited application possibilities.



MOBOTIX HiRes video replaces up to 6 cameras ...

- Attractively designed FixDome camera featuring exchangeable lenses from Tele to Wide Angle
- Numerous installation options both indoor and outdoor
- On-wall set with space for extension modules (battery, UMTS, WLAN, etc.)
- Integrated DVR with HiRes video recording
- Robust, low-maintenance and weatherproof from -30° to +60°C (-22° to +140°F), (IP65)
- Digital continuous zoom, pan and tilt
- Can be upgraded to an intercom system with the MOBOTIX ExtIO module

... starting at \$648* incl. video management software

© MOBOTIX AG • MSRP (Manufacturer's suggested retail prices) • Prices ex-works Charleston, South Carolina (SC), USA (EXW) • Excluding VAT and any other handling charges • Information subject to change without notice!

HiRes Video Innovations

The German company MOBOTIX AG is known as the leading pioneer in network camera technology and its decentralized concept has made high-resolution video systems cost efficient.

MOBOTIX CORP • Manhattan (NY) • Phone: 888-MOBOTIX (662 6849) • us-sales@mobotix.com • Made in Germany

Technical Specifications D22



The HiRes Video Company

MOBOTIX

Technical Specifications D22 MonoDome

Models	Basic, IT, IT-Night, Sec, Sec-Night	Virtual PTZ	Digital Pan/Tilt/Zoom, continuous 8x zoom
Lenses	22 to 135 mm format, horizontal angle 90° to 15°	Alarm/Events	Triggering of events by integrated multiple-window motion detection, external signal, temperature sensor, notification over email, FTP, IP-Telephony (VoIP, SIP), visual/acoustic alarm, Pre- and post-alarm images
Sensitivity	Color: 1 lux (t=1/60 s), 0,05 lux (t=1/1 s) B/W: 0,1 lux (t=1/60 s), 0,005 lux (t=1/1 s)	Audio	Optional via ExtIO, video VoIP supported
Sensor	1/2" CMOS, progressive scan	Interfaces	Ethernet 10/100, USB, Audio (microphone/speaker)
Max. image resolution	Color: 2048 x 1536 (3Mega), B/W: 1280 x 960 (Mega)	Audio/Telephony	VoIP, SIP, two-way speaker, remote controlling of the camera in- and outputs, event notification
Image format	2048 x 1536, 1280 x 960, 1024 x 768, 800 x 600, 768 x 576 (D1), 704 x 576 (TV-PAL), 640 x 480, 384 x 288, 352 x 288, 320 x 240, 160 x 120; free image format selection (e.g. 1000 x 200 for skyline)	Security	User-/Group management, HTTPS/SSL, IP address filter, IEEE 802.1x, Intrusion Detection
Max frame rate (M-JPEG) (Live/Recording)	VGA: 16 fps, TV-PAL: 12 fps, Mega: 6 fps, 3Mega: 4 fps	Certificates	BGV C 9; EMC: DIN EN 61000, DIN EN 50155 (shock, vibration, temperature), FCC part 15B; CE
Video stream (MxPEG) (Live/Recording/Audio)	VGA: 30 fps, TV-PAL: 24 fps, Mega: 14 fps, 3Mega: 10 fps	Power supply	Year-round Power over Ethernet (IEEE 802.3af; Class 0), Netpower-Adapter, typ. 2,5 W
Image compression	MxPEG, M-JPEG, JPG, H.263 (Video-VoIP-Telephony)	Operating conditions	IP65 (DIN EN 60529), -30° to +60 °C (-22°F to +140°F)
Internal DVR	Slot for SD card (up to 16 GB)	Dimensions	Ø x H: 16 x 8,6 cm, Weight: ca. 350 g
External storage	Directly on NAS and PC/Server without additional recording software	Standard delivery	Housing (high-resistance composites - PBT-PC), white, shockproof polycarbonate dome (transparent), free choice of lenses, mounting parts, allen wrench, patch cable, manual, software
Software (inclusive)	Video-Management-Software MxEasy, Control room software MxControlCenter		
Image processing	Backlight compensation, automatic white balance, image distortion correction, video sensor (motion detection)		

Technical information subject to change without notice!

Available Accessories D22 MonoDome

In-Ceiling Set MX-D22M-OPT-IC	On-Wall Set MX-D22M-OPT-AP	Vandalism Set MX-D22M-Vandal-Kit	Outdoor Wall Mount MX-D22M-OPT-WH	Pole Mount MX-D22M-OPT-MH	ExtIO Extension Module MX-ExtIO
					
<ul style="list-style-type: none"> Consists of in-ceiling mount and mounting parts Easy mounting from front Ø 150 mm installation dimension It can be ordered with stainless steel cover 	<ul style="list-style-type: none"> Consists of On-Wall mount and mounting parts Protects the cabling 165 mm x 37 mm 	<ul style="list-style-type: none"> Reinforced dome (3 mm Polyc.) Stainless steel vandalism housing polished or matt, in white, silvergray or black 	<ul style="list-style-type: none"> Weatherproof (IP65) Covers RJ45 wall outlets Space for expansion modules (WLAN) 	<ul style="list-style-type: none"> 3 mm stainless steel, white 2 stainless steel straps for pole diameter 60-180 mm, incl. mounting parts 	<ul style="list-style-type: none"> Microphone/speaker PIR sensor for motion detection, temperature sensor Integrated switch functions

	L22 Super Wide Angle 90°	L32 Wide Angle 60°	L43 Wide Angle 45°	L65 Tele 31°	L135 Tele 15°
Lenses					
	approx. 90°H x 67°V at 10 m appr: 20.0 x 13.3 m	approx. 60°H x 45°V at 10 m appr: 11.5 x 8.2 m	approx. 45°H x 34°V at 10 m appr: 8.2 x 6.1 m	approx. 31°H x 23°V at 10 m appr: 5.5 x 4.0 m	approx. 15°H x 11°V at 10 m appr: 2.6 x 1.9 m

HiRes Video Innovations

The German company MOBOTIX AG is known as the leading pioneer in network camera technology and its decentralized concept has made high-resolution video systems cost efficient.

MOBOTIX CORP • Manhattan (NY) • Phone: 888-MOBOTIX (662 6849) • us-sales@mobotix.com • Made in Germany