

# LPHDS-C product information sheet



The Low Profile Series of fixed, tilt and cantilever mounts offers a sleek and slim design without compromising functionality. With an impressively low 1.8" (46mm) mounting profile, the LPHDS-C is a small cantilever mount perfectly suited for those applications where seamless integration counts most.

## Product Benefits

- Arms completely nest for a discreet 1.8" (46mm) mounting profile
- Tilt, pan and swivel for maximum viewing flexibility
- Steel tube construction for maximum strength and durability
- Rack and pinion tilt mechanism for effortless adjustment
- Quick-snap cable channels guide wires
- Built-in screen leveling
- Lift n' Lock™ for quick installation
- 3-point lateral adjustment (1" increments)
- Safety screw secures panel to mount
- Wall plate covers conceal mounting hardware
- Installation template for simple and accurate mounting

- Includes complete Grade 5 hardware kit

## Product Specifications

**Fits most:** 13–32" flat panels

**Supports up to:** 50 lbs (22.7 kg)

**Tilt:** +15° to -5°

**Mounting profile:** 1.8" (46mm)

**Maximum extension:** 16.2" (410mm)

**VESA compliant:** 100wx100h and 200wx100h

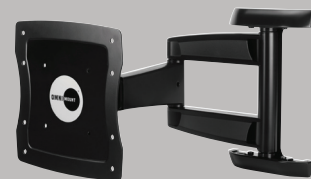
**Mounting:** Single-stud

**UL Listed:** Yes

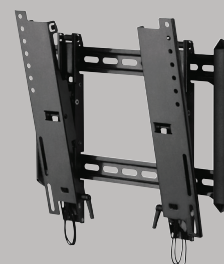
**Warranty:** 5 years

**Color:** Black

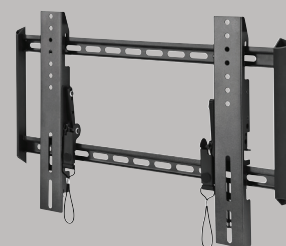
## Series



CANTILEVER MOUNTS



TILT MOUNTS



FIXED MOUNTS



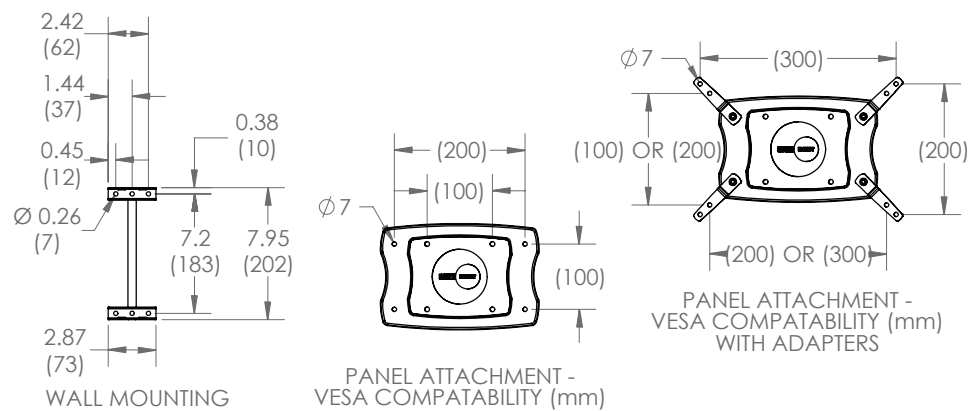
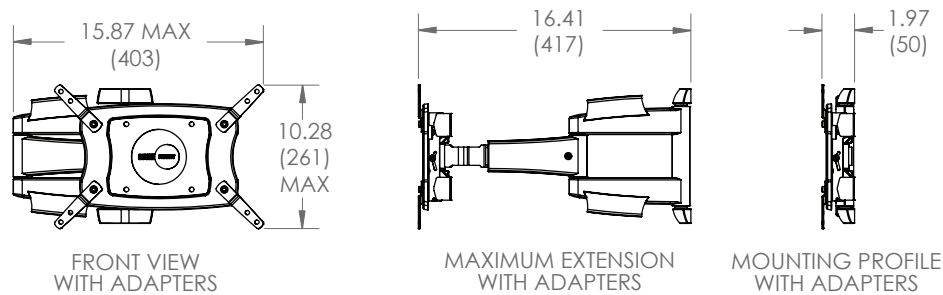
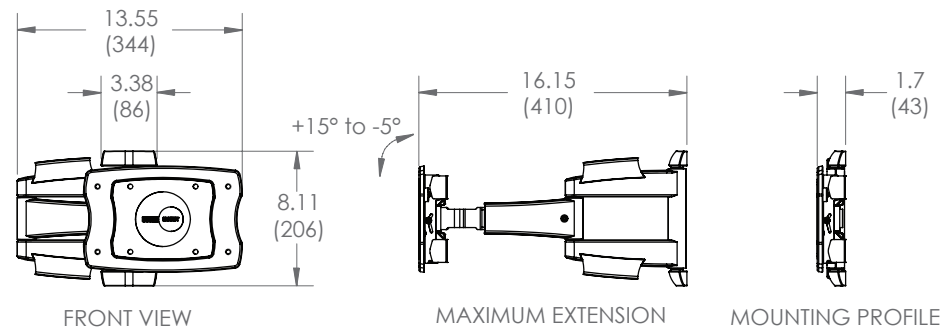
With OmniMount's low profile cantilevers, you get everything you want in one mount – the functionality and versatility of a full motion mount in a compact and discreet design.

**800.MOUNT.IT (800.668.6848)**



11042011

# LPHDS-C technical data sheet



inches (mm)

## Architects Specifications

The flat panel wall mount shall be an OmniMount model LPHDS-C and shall be located where indicated on the plans. It shall be constructed of sheet metal with -5°/+15° adjustable tilt. Assembly and installation shall be done according to instructions provided by the manufacturer.

	Packaging UPC	MC UPC	Dimensions WxDxH Inches (mm)	Wt lbs (kg)	Qty
Americas	728901023736	728901717185	Box 12.4 x 15 x 3.5 (315x380x90)	7 (3.2)	NA
International	728901023736	728901717185	MC 15.8 x 25.8 x 7.5 (400x655x190)	29.1 (13.2)	4

Box Contents	Qty
Monitor plate	1
Full motion arm	1
Wall rail	2
Wall rail cover	2
Cable channel	2

Box Contents	Qty
Complete mount installation hardware kit	1
Complete panel attachment hardware kit	1
Installation template	1
Instruction manual	1

