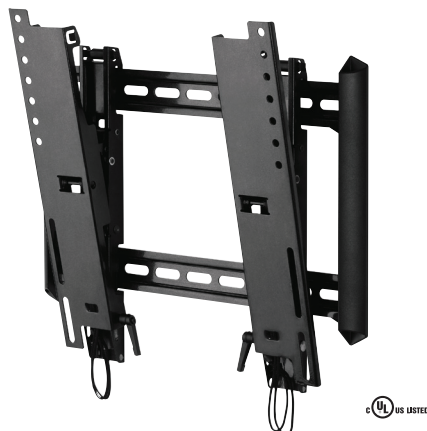


# LPHDM-T product information sheet



The Low Profile Series of fixed, tilt and cantilever mounts offers a sleek and slim design without compromising functionality. With an impressively low 1.5" (37mm) mounting profile, the LPHDM-T is a medium tilt mount perfectly-suited for those applications where seamless integration counts most.

## Product Benefits

- Low 1.5" (37mm) mounting profile
- Tilt up to +15° to reduce glare
- Innovative built-in kickstand makes wiring your flat panels convenient
- Universal rails for greater VESA compatibility
- Lift n' Lock™ for quick installation
- Tension adjustment for variable tilt
- Sliding lateral on-wall adjustment
- Open architecture for easy trim out
- Safety screw secures flat panel to mount
- Wall plate covers conceal mounting hardware
- Extruded aluminum end caps present a clean side view
- Installation template for simple and accurate mounting
- Includes complete hardware kit

**Supports up to:** 125 lbs (56.7 kg)

**Tilt:** Up to +15°

**Mounting profile:** 1.5" (37mm)

**Universal & VESA compliant:**

200wx100h to 400wx400h

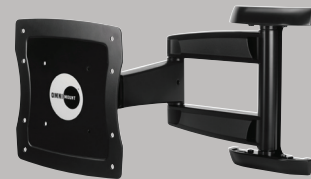
**Mounting:** Double-stud

**UL listed:** Yes

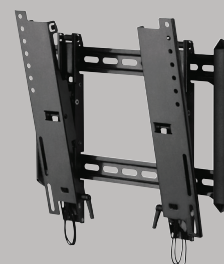
**Warranty:** 5 years

**Color:** Black

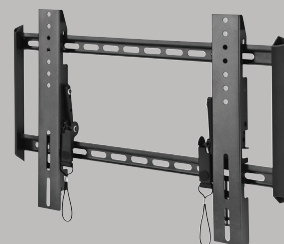
## Series



CANTILEVER MOUNTS



TILT MOUNTS



FIXED MOUNTS

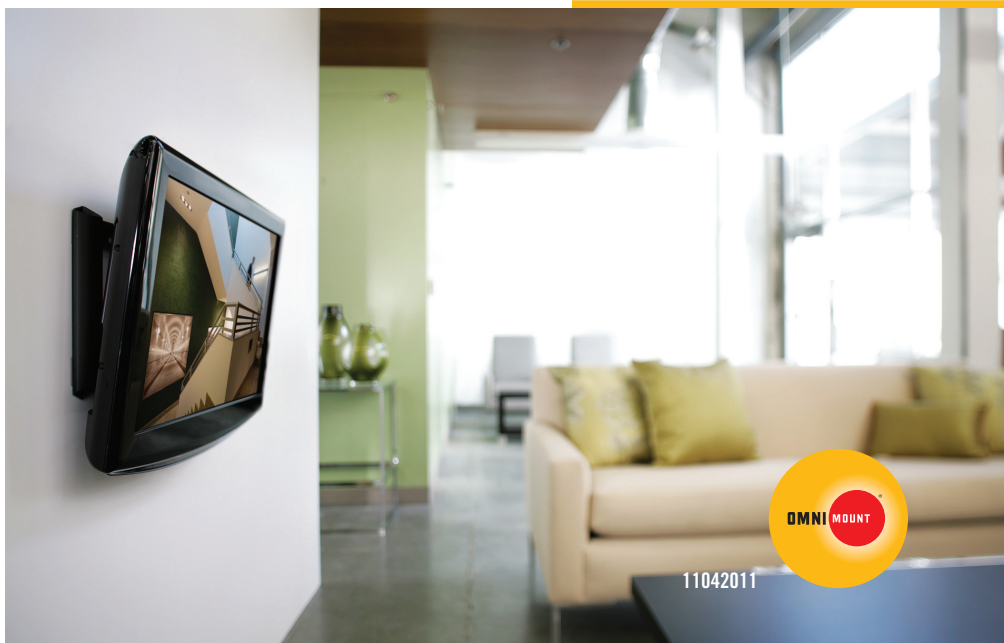
## Product Specifications

**Fits most:** 23–42" flat panels



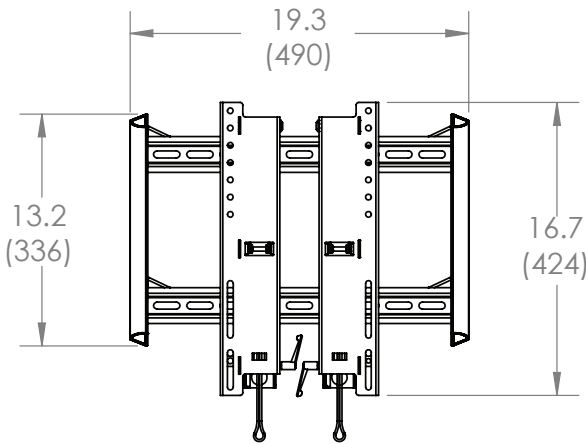
The LPHDM-T is designed with an innovative built-in kickstand which allows one person to wire the flat panel with no vertical lifting.

**800.MOUNT.IT (800.668.6848)**

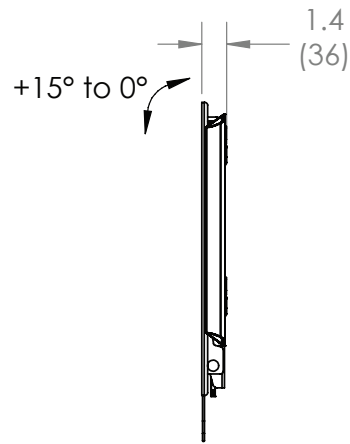


11042011

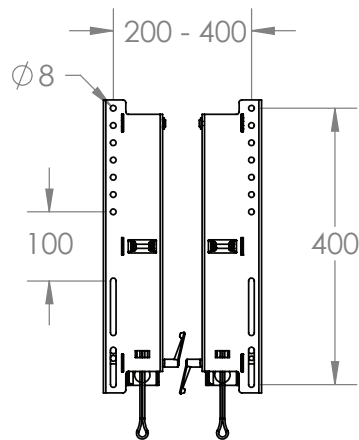
# LPHDM-T technical data sheet



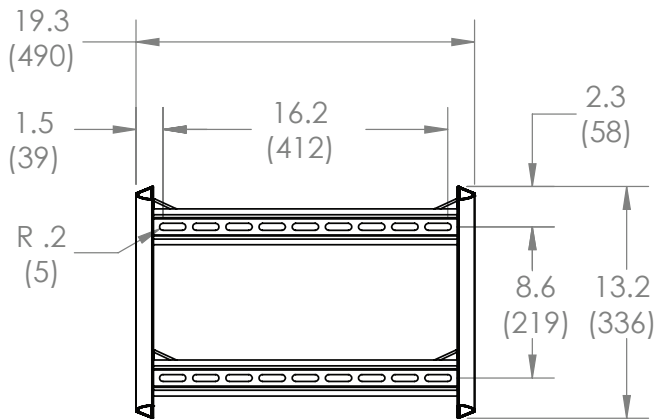
FRONT VIEW



MOUNTING PROFILE



PANEL ATTACHMENT -  
VESA COMPATABILITY (mm)



WALL MOUNTING



inches (mm)

## Architects Specifications

The flat panel wall mount shall be an OmniMount model LPHDM-T and shall be located where indicated on the plans. It shall be constructed of sheet metal with +15° adjustable forward tilt. Assembly and installation shall be done according to instructions provided by the manufacturer.

	Stock Code	Packaging UPC	MC UPC
Americas	1003913-1	728901020865	728901714313
International	NA	NA	NA

	Dimensions WxDxH Inches (mm)	Wt lbs (kg)	Qty
Box	13.4 x 26.4 x 3.5 (340x670x90)	29 (13.2)	NA
MC	13.4 x 27 x 7.5 (355x685x190)	58 (26.3)	2

Box Contents	Qty
Wall plate	1
Vertical tilt rail with kickstand	2
Security clip	2
Bottom rail cover	1
Top rail cover	1

Box Contents	Qty
Complete mount installation hardware kit	1
Complete panel attachment hardware kit	1
Installation template	1
Instruction manual	1

