

Product Information Sheet

Moda
COLLECTION
by cm mount



LDC31

With unique and contemporary designs, the Moda Collection of home theater furniture strikes an ideal balance of aesthetics and functionality. Each piece in the collection – which includes everything from tables to wall furniture – is designed with ample space for components and cable management with an emphasis on high design. The Link Series was created with one thing in mind – modularity. Four pieces work together to form unique configurations which can be customized to your home theater. Their distinct design integrates a walnut or black finish, black glass and brushed nickel accents – all creating a look that is evocative, to say the least. As an integral part of the modular Link Series, the LDC31 is a stackable double audio cabinet that conceals components and media, ideal as a standalone solution in bedrooms or compact spaces.



The Link Series is now available in a striking black finish with black drop-down glass doors, which allow IR signals through to easily control components

BENEFITS

- Modular pieces are designed to be linked to ensure the best possible furniture combination
- Stackable double audio cabinet conceals components and media
- Flush hinges on drop-down doors offer unobstructed interior space
- Removable legs allow cabinet to be stacked on another or rest on the floor
- Brushed nickel legs accent the contemporary finish
- Padded feet protect floors
- Easy to assemble

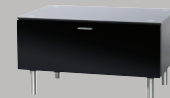
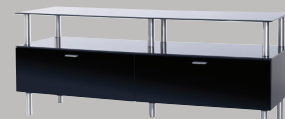
SPECIFICATIONS

- Top shelf supports up to 50 lbs (22.7 kg)
- Dimensions: 31.5" w x 29" h x 20.6" d (801mm x 737mm x 524mm)
- Warranty: 5 years
- Color: Walnut with black glass and Black with black glass

The Link Series



LT63



LC31



LS31

LDC31



BENEFITS

- Modular pieces are designed to be linked to ensure the best possible furniture combination
- Stackable double audio cabinet conceals components and media
- Flush hinges on drop-down doors offer unobstructed interior space
- Removable legs allow cabinet to be stacked on another or rest on the floor
- Brushed nickel legs accent the contemporary finish
- Padded feet protect floors
- Easy to assemble

SPECIFICATIONS

- Top shelf supports up to 50 lbs (22.7 kg)
- Dimensions: 31.5" w x 29" h x 20.6" d (801mm x 737mm x 524mm)
- Warranty: 5 years
- Color: Walnut with black glass and Black with black glass

	Color	Stock Code	Packaging UPC
Americas	WAL	1004584-1	728901023835
International	WAL	NA	NA
Americas	BLK	1004529-1	728901023866
International	BLK	NA	NA

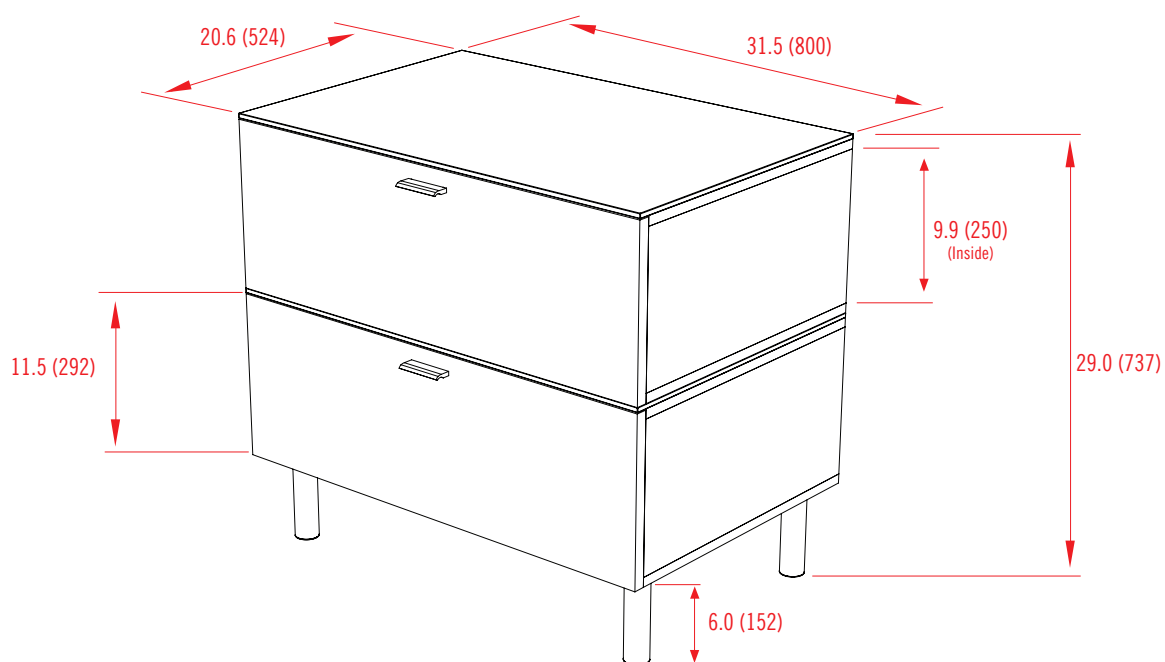
Box Contents	Qty
Glass top	1
Metal leg with cap	4
Handle	2
Wood top	2
Wood bottom	2

	Dimensions WxDxH inches (mm)	Wt lbs (kg)
Product Box WAL	25.2 x 36.2 x 27.6 (640x920x700)	134.5 (61)
Product Box BLK	25.2 x 36.2 x 27.6 (640x920x700)	141.1 (64)

Box Contents	Qty
Wood side	4
Wood back	2
Complete furniture assembly hardware kit	1
Instruction manual	1

With unique and contemporary designs, the Moda Collection of home theater furniture strikes an ideal balance of aesthetics and functionality. Each piece in the collection – which includes everything from tables to wall furniture – is designed with ample space for components and cable management with an emphasis on high design. The Link Series was created with one thing in mind – modularity. Four pieces work together to form unique configurations which can be customized to your home theater. Their distinct design integrates a walnut or black finish, black glass and brushed nickel accents – all creating a look that is evocative, to say the least. As an integral part of the modular Link Series, the LDC31 is a stackable double audio cabinet that conceals components and media, ideal as a standalone solution in bedrooms or compact spaces.

LDC31



inches (mm)