

Lift42 product information sheet

Product Specifications

Fits most: 37" - 42" flat panels

Supports up to: 150 lbs (68 kg)

Vertical lift: 26.5" (673mm)

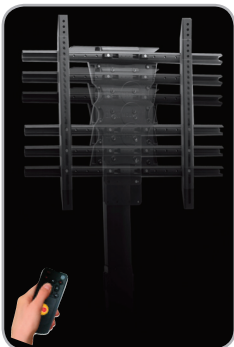
Universal & VESA compliant: 100x100 to 600x800

Warranty: 12 months

Color: Black

Product Benefits

- Lift or hide your flat panel from anywhere in a room with remote control
- Small footprint and compact profile for efficient space planning
- Remote controllable via IR (remote control included)
- Durable steel construction
- Includes universal adapter for greater panel compatibility
- Chain driven mechanism offers maintenance-free and virtually silent operation (less than 50db)
- Lift column extends completely in 15 seconds (43mm/sec)
- Lift n' Lock™ for quick installation
- Field serviceable
- Includes remote control and complete Grade 5 hardware kit



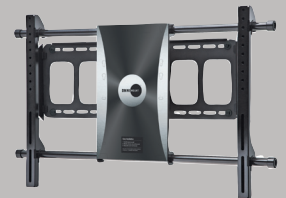
The Lift42 comes with a remote control so you can operate your lift system from anywhere in the room



Series



Power40



Power55



Lift42



Dedicated to being a one-stop shop for professional products, OmniMount remains on the cutting edge of product innovation. That's why we're the natural choice for any professional, industrial, or commercial application. OmniMount remains on the cutting-edge of innovation by offering the MotionPicture Series – a full line of remote controlled motorized mounts designed with the convenience of automation. The Lift42 offers the most compact design of any motorized custom cabinet lift system, while offering the greatest panel compatibility. It's the perfect addition to any room – from bedrooms to boardrooms.



Dedicated to being a one-stop shop for professional products, OmniMount remains on the cutting edge of product innovation. That's why we're the natural choice for any professional, industrial, or commercial application. OmniMount remains on the cutting-edge of innovation by offering the MotionPicture Series – a full line of remote controlled motorized mounts designed with the convenience of automation. The Lift42 offers the most compact design of any motorized custom cabinet lift system, while offering the greatest panel compatibility. It's the perfect addition to any room – from bedrooms to boardrooms.



Product Specifications

Fits most: 37" - 42" flat panels

Supports up to: 150 lbs (68 kg)

Vertical lift: 26.5" (673mm)

Universal & VESA compliant: 100x100 to 600x800

Warranty: 12 months

Color: Black

Product Benefits

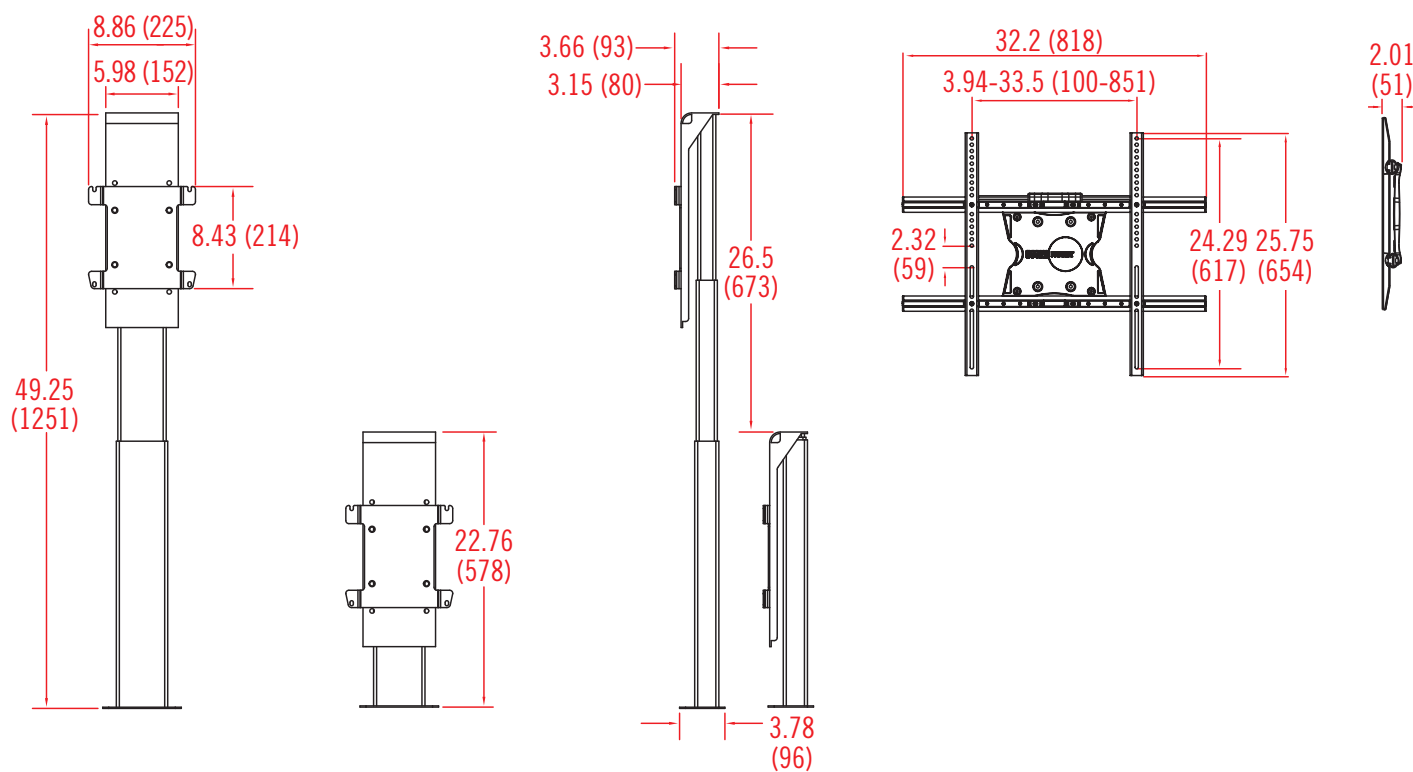
- Lift or hide your flat panel from anywhere in a room with remote control
- Small footprint and compact profile for efficient space planning
- Remote controllable via IR (remote control included)
- Durable steel construction
- Includes universal adapter for greater panel compatibility
- Chain driven mechanism offers maintenance-free and virtually silent operation (less than 50db)
- Lift column extends completely in 15 seconds (43mm/sec)
- Lift n' Lock™ for quick installation
- Field serviceable
- Includes remote control and complete Grade 5 hardware kit

	Stock Code	Packaging UPC	MC UPC
Americas	1003967D	728901021367	NA
International	NA	NA	NA

	Dimensions WxDxH Inches (mm)	Wt lbs (kg)
Product Box	32.7 x 17.7 x 7.3 (830x450x185)	46.5 (21.1)
Master Carton	NA	NA

Box Contents	Qty
Base mount	1
Lift column	1
Universal adapter	1
Vertical extension rail	2
Remote control	1
IR receiver	1
Bayonet bracket	1
Screen support	1
Top plate	1

Box Contents	Qty
Control box	1
Rail cover	1
Column adapter	1
Motor cable	1
Power cable	1
Complete mount assembly hardware kit	1
Complete panel attachment kit	1
Instruction manual	1
Flat panel compatibility chart	1



inches (mm)