



Professional Color Dome Camera

- Sony 1/3" Super HAD Color CCD II
- 550TVL Horizontal Resolution
- Vari-Focal Lens (f2.6 ~ 11.0mm)
- Fast Shutter Speed (1/60 ~ 1/100,000 sec, Auto)
- Auto Gain Control (AGC) & White Balance (ATW)
- Monitor Output Terminal for Easy Servicing
- 3-Axis Gimbal Bracket
- Supports DC 12V / AC 24V Power Supply

Easy, Convenient and Discrete!

For the cosmetic interior, ceiling or wall-mount cameras are seen just about everywhere. One of the reasons for the dome cameras popularity is that unlike most cameras, the domes are unobtrusive and subtle in appearance.

Also, the dome bubble makes it hard to determine which way the camera is facing causing a moments hesitation and confusion.

This Dome unit includes a Sony 1/3" Super HAD CCD II that offers 550TVL resolution. Its 3-axis gimbal bracket inside the dome can be manually rotated 360° with +/- 90° tilt angle! This should be more than ample for any application.



Automatic Gain Control (AGC)

This camera is built with an advanced AGC function, which automatically boosts the camera gain to allow a user monitoring the subject more clearly in low light conditions.

Automatic Tracing White Balance (ATW)

The ATW function supports fast, active shooting by automatically adjusting the white balance in real time as the lighting conditions change.

3-Axis Rotating Mechanism

This camera is mounted on a 3-axis rotating platform, which allows an installer to easily adjust the field of view horizontally, vertically, and/or with a rotary movement. With this feature, you don't need to worry about where the camera is attached and/or how it is oriented.

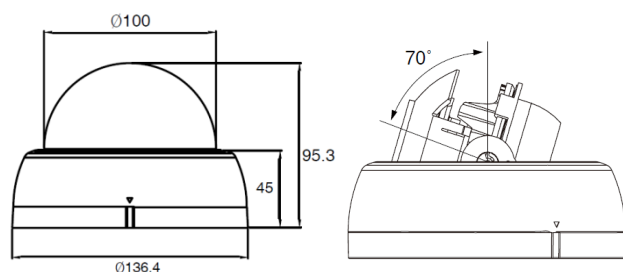


Secondary Monitor Output Terminal

The built-in secondary monitor output terminal gives the convenience of on-the-spot adjustments of the angle and focus.



Product Dimensions (mm)



* Specifications & Features are subject to change without prior notice.

Part No.: KPC-DQ100NHV14

Technical Specification

Model	KPC-DQ100NHV14	KPC-DQ100PHV14
Signal System	NTSC	PAL
Image Sensor	1/3" Sony Super HAD CCD II	
Scanning System	2:1 Interlace	
Scanning Frequency (H)	15.734 KHz	15.625 KHz
Scanning Frequency (V)	59.94 Hz	50 Hz
Total Pixels	811(H) x 508(V)	795(H) x 596(V)
Effective Pixels	768(H) x 494(V)	752(H) x 582(V)
Synchronization	Internal	
Horizontal Resolution	More than 550 TV Lines	
Lens Size	f2.6mm ~ 11.0mm Vari-Focal Lens	
S/N	More than 45dB (AGC Off)	
Min. Illumination	0.05Lux / Face Plate	
Shutter Speed	1/60 sec	1/50 sec
Video Output Level	1Vp-p Composite (75Ω), Unbalanced	
Auto Gain Control (AGC)	MIN / MAX	
White Balance	ATW / PUSH	
Gamma	$\gamma = 0.45$	
Operating Temperature	-10 °C ~ 50 °C (14 °F ~ 122 °F)	
Storage Temperature	-20 °C ~ 60 °C (-4 °F ~ 140 °F)	
Humidity	Less than 80%RH	
Power Supply	DC 12V \pm 10% (Max 230mA), AC 24V \pm 10% (2.5W)	
Dimensions	Dome (ø100mm), 136.4mm(ø) x 95.3mm(H) Dome (ø3.94"), 5.37"(ø) x 3.75"(H)	

* Specifications & Features are subject to change without prior notice.