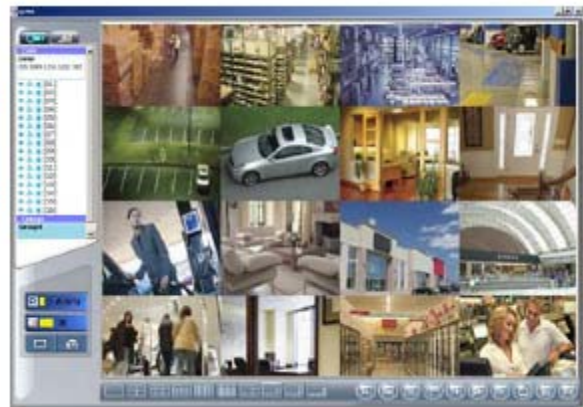




IV-811ZAECO/IV-1611ZAECO



IV-811ZAECO / IV-1611ZAECO



CMS

#### Features:

- . H.264 main profile compression technology, saves 20% more recording time than the traditional H.264 method
- . 2 USB ports help users to operate the DVR (mouse or touch panel) and do backup or upgrade firmware at the same time
- . Up to 480fps NTSC at CIF
- . Dual stream, recording at D1 and viewing at CIF or QCIF remotely
- . CMS (Central Management Software) supports up to 16 pcs DVRs for free
- . Intelligent 3G/GPRS mobile surveillance: Symbian, Windows mobile, iPhone, Blackberry, HTC Android
- . GUI with 16 bit True Color
- . Upgrade firmware by USB or network
- . Supports up to 2 SATA devices for 8CH DVR, 3 SATA devices for 16CH DVR

SPECIFICATION		IV-811ZAECO	IV-1611ZAECO
Video	Camera input	8	16
	Output	1 BNC ( User Configured Spot monitor or Main), 1 VGA (max. 1280 x 1024)	
Audio	Audio input	4 RCA	16 RCA
	Output	2 RCA	2 RCA
Sensor In (NO, NC) / Relay out		8 Sensor In, 1 Relay out	16 Sensor In, 2 Relay out
USB		2 x USB 2.0	
Operating System		Embedded Linux OS	
Display	Speed	240 fps	480 fps
	Resolution	720 x 480 (NTSC)	
	Split scren	1, 4, 8, SEQ.	1, 4, 9, 13, 16 SEQ.
	Mode	Digital Zoom (2x ~ 8x). PIP, Auto SEQ	
Recording	Compression	H.264 ASP (Internet Transmission: H.264)	
	Dual Stream Resolution	Main (Recording): 704 x 480, 704 x 240, 352 x 240	
		Sub (Network): 352 x 240	
	Picture quality	5 steps (Highest, High, Normal, Basic, Below Basic)	
	Mode	Manual, Motion, Sensor, Schedule	
	Speed	120 fps(704x480), 240 fps(704x240) 240 fps(352x240)	120 fps(704x480), 240 fps(704x240) 480 fps(352x240)
	Pre-Alarm	10 SEC	
Post-Alarm	1 ~ 60 SEC		
Playback	Display	1, 4, 8	1, 4, 8, 16
	Search mode	Date, time, event,(motion, alarm), camera	
	Zoom	Digital (2x - 8x)	
	Speed	Normal, REW & FF (recorded speed 2x, 4x, 8x, 16x, 32x, 64x), Frame to frame, Pause	
	Device	Internal HDD / USB / DVDRW	
Network	Network Interface	10/100 Ethernet	
	Protocal	TCP/IP, SMTP, HTTP, DHCP, PPPoE (ADSL)	
	Serial Communication	RS-485	
	Application	Windows XP / Vista / 7 (PC Client system), Mac OS	
	Remote Software	License Application Software, IE Browser	
	CMS	unlimited (depends on bandwidth)	
	3G/GPRS	Symbian, Windows Mobile, Blackberry, iPhone, HTC Android	
	Event Notification	On Screen / E-mail	
Backup	Interface	USB 2.0 or SATA	
	Audio backup	Yes	
	Backup device	SATA DVD±RW / Network Backup / USB Flash drive/USB DVD±RW	
Alarm	Motion detection	Each control / channel	
		Sensitivity: 10 steps for each channel	
	Alarm Hold time	Area: programmable motion detection area for each camera individually	
Event log	1 ~ 60 SEC		
OSD & DVR Control	GUI	Up to 10K events(Sensor, motion, video loss, power on, remote login/logout, HDD error/full)	
	Multi language	16 bit True Color	
		English, French, German, Greek, Japanese, Italian, Polish, Portuguese, Russian, Spanish Simplified/Traditional Chinese Koren, Polish, Hungarian, Hebrew, Thai, Dutch Persian	
	USB Mouse	Yes	
	Touch Panel	Optional Touch Panel LCD Monitor	
	Remote control	IR remote control	
	Upgrade	USB / Network	
	Key Function	Front Panel	
	Camera Title	Multi Language	
Other	Pan/tilt camera	Control From RS485 Interface (Pelco P, Pelco D, Samsung, LG, LiLin)	
	internal HDD	Supports Max. x 2 SATA Device	Supports Max. x 3 SATA Devices
	External HDD	1 x E-SATA (optional)	
	Auto switching	Switching time: 1 ~ 999 sec	
	Power Source	Input 100~240V, Output 12V 5A	Input 100~240V, Output 12V 6A
	Weight	11.5 LB with shipping box	11.8 LB with shipping box
Dimension	2.25" X 17" X 12.25"		
IDView Technologies • 12000 Ford Rd. Suite 110 • Dallas, TX 75234 • www.idview.com			