

# IQ125C product information sheet

## Product Specifications

**Fits most:** 37" - 52" flat panels

**Supports up to:** 125 lbs (56.7 kg)

**Tilt:** -5° to +15°

**Mounting profile:** 5.51" (140mm)\*

**Maximum extension:** 22.01" (559mm)

**Universal & VESA compliant:**

100x100 to 400x800

**Mounting:** Double-stud

**Warranty:** 5 year

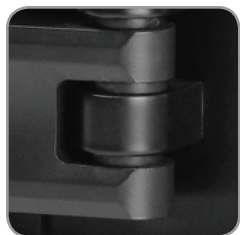
**Color:** Black

\*adapter adds 1.25" (32mm)



## Product Benefits

- Tilt, pan and swivel for maximum viewing flexibility
- Frictionless Delrin™ washers at every joint for fluid movement
- Patent-pending 4-bar tilt mechanism for effortless adjustment
- Extruded aluminum arms for maximum support in a lightweight mount
- Includes universal adapter for greater panel compatibility
- Lift n' Lock™ for quick installation
- Integrated cable management guides wires
- 9.4" (239mm) sliding lateral on-wall adjustment
- Built-in screen leveling
- Open architecture for easy trim out
- Locking system secures panel to mount
- Wall plate covers conceal mounting hardware
- Installation template for simple and accurate mounting
- Includes complete Grade 5 hardware kit



The iQMounts have frictionless Delrin™ washers at every joint, giving you the benefit of smooth movement.

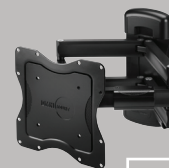
## Series



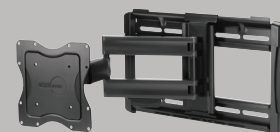
IQ30C



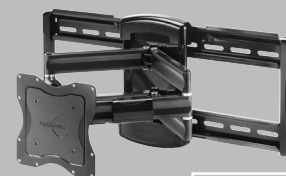
IQ80C



IQ100C



IQ125C



IQ200C



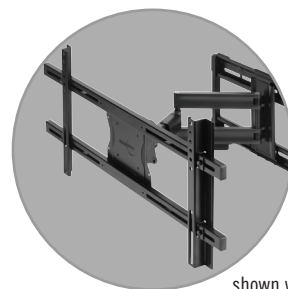
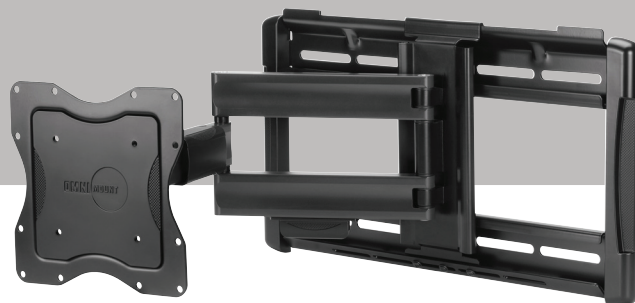
Dedicated to being a one-stop shop for professional products, OmniMount remains on the cutting edge of product innovation. That's why we're the natural choice for any professional, industrial, or commercial application. The iQMounts Series puts a fresh spin on an old favorite, providing fixed, tilt and cantilever mounts with improved functionality – not to mention a new clean design. With enhanced functionality and a streamlined design, the IQ125C is a sensible cantilever for any job or customer requiring a mounting solution for large flat panels.



# IQ125C technical data sheet



Dedicated to being a one-stop shop for professional products, OmniMount remains on the cutting edge of product innovation. That's why we're the natural choice for any professional, industrial or commercial application. The iQMounts Series puts a fresh spin on an old favorite, providing fixed, tilt and cantilever mounts with improved functionality – not to mention a new clean design. With enhanced functionality and a streamlined design, the IQ125C is a sensible cantilever for any job or customer requiring a mounting solution for large flat panels.



shown with adapter

## Product Specifications

**Fits most:** 37" - 52" flat panels

**Supports up to:** 125 lbs (56.7 kg)

**Tilt:** -5° to +15°

**Mounting profile:** 5.51" (140mm)\*

**Maximum extension:** 22.01" (559mm)

**Universal & VESA compliant:** 100x100 to 400x800

**Mounting:** Double-stud

**Warranty:** 5 year

**Color:** Black

\*adapter adds 1.25" (32mm)

## Product Benefits

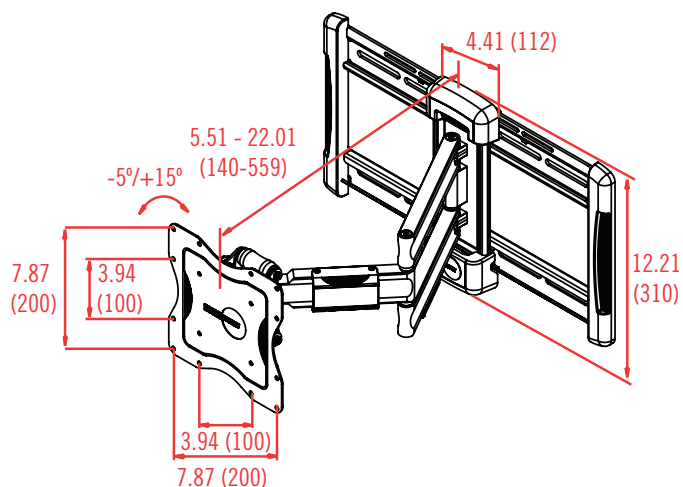
- Tilt, pan and swivel for maximum viewing flexibility
- Frictionless Delrin™ washers at every joint for fluid movement
- Patent-pending 4-bar tilt mechanism for effortless adjustment
- Extruded aluminum arms for maximum support in a lightweight mount
- Includes universal adapter for greater panel compatibility
- Lift n' Lock™ for quick installation
- Integrated cable management guides wires
- 9.4" (239mm) sliding lateral on-wall adjustment
- Built-in screen leveling
- Open architecture for easy trim out
- Locking system secures panel to mount
- Wall plate covers conceal mounting hardware
- Installation template for simple and accurate mounting
- Includes complete Grade 5 hardware kit

	Stock Code	Packaging UPC	MC UPC
Americas	1004545-1	728901023927	728901717376
International	NA	NA	NA

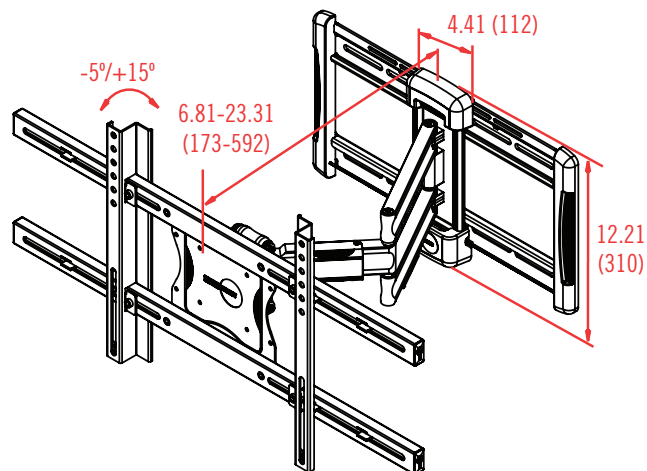
	Dimensions WxDxH Inches (mm)	Wt lbs (kg)
Product Box	22.9 x 13.4 x 13 (960x522x196)	26.8 (13.5)
Master Carton	NA	NA

Box Contents	Qty
Cantilever wall plate	1
Cantilever arm	1
Monitor plate	1
Cable management channel	2
Wall plate cover	2

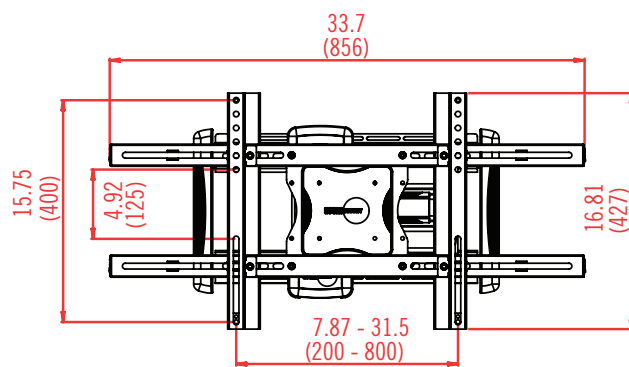
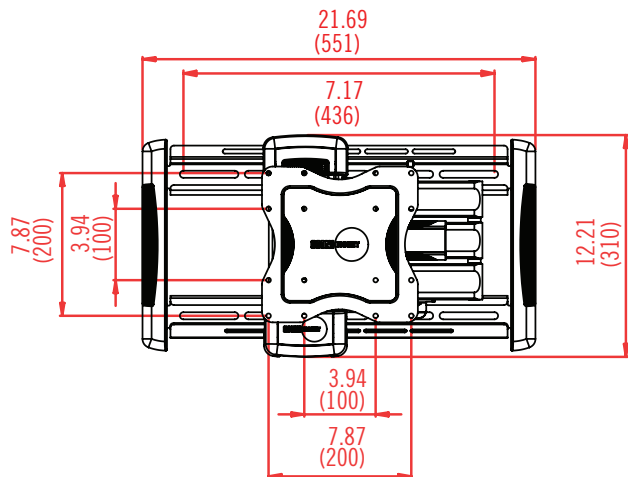
Box Contents	Qty
Vertical adapter rail	2
Horizontal adapter rail	2
Complete mount installation hardware kit	1
Complete panel attachment hardware kit	1
Instruction manual	1



Without Adapter



With Adapter



inches (mm)