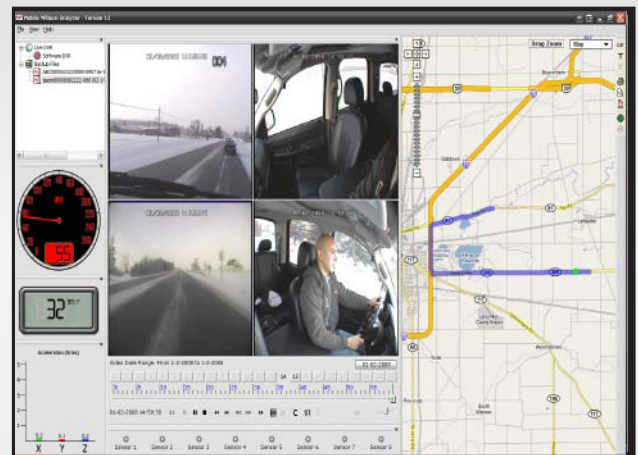


Features

- H.264 Video Compression Technology
- 4 Channel Mobile DVR ,Supports 1 Channel Real Time D1 (720x480)
- Removable Hard Drive
- USB Video Offload
- Built-in GPS
- Optional 3G/EDVO/HSPDA Interface or WiMAX Support (USB Modem)
- High Resolution Encrypted Video
- Solid State Recording - No Moving Parts (optional)
- Dual Streaming Support
- Optional Wi-Fi for Automatic Video Download
- Stand alone Non-PC Embedded Operating System (RTOS) Provides Maximum Stability



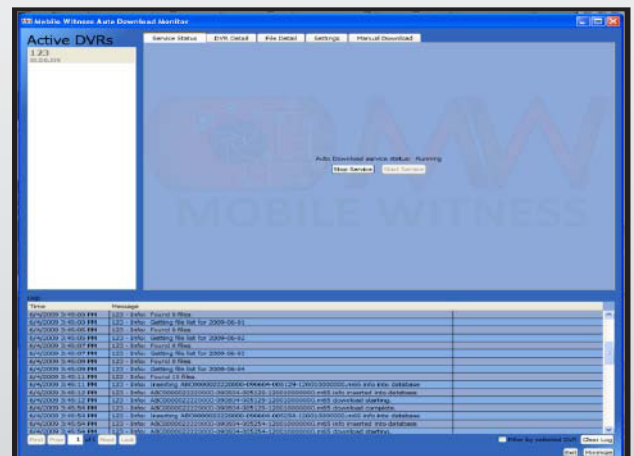
Mobile Witness Analyzer



Mobile Link



Auto Download Software



Technical Specifications

System	OS	Linux 2.6 (providing standalone stable operation system)
	Operation Interface	Hand-held, IR controller with On-Screen Display (OSD) for all operations of the MDVR
	Storage	SATA 2.5" HDD or 2.5"SSD
	Signal System	NTSC/PAL
	Input Voltage	8V-36 V,DC output 12V/3A, 5V/2A
Video	Camera Input	Up to 4 cameras
	Display	Video Window Screens 1/4/8
	Image Quality	8 – level adjustable
	Fwd/Playback speed	x2, x4, x1/2, x1/4
	Stream Standard	ISO14496-10
	Record Resolution	CIF(352x288 pixels for PAL, 360x240 pixels for NTSC), 1/2D1 (704x288 pixels for PAL, 720x240 pixels for NTSC), D1 (720x576 pixels for PAL, 720x480 pixels for NTSC)
	Image Compression	H.264
	Max FPS	200 / 240 FPS (25/30 FPS/CH at CIF, 12.5/15 FPS/CH at HD1, 6.25/7.5 FPS/CH at D1)
	Display Res.	TV Monitor 704x576 pixels for PAL at D1 / 720x480 pixels for NTSC at D1, 720x576 pixels for PAL at D1 / 704x480 pixels for PAL at D1
Audio	Audio Input	4 (mono)
	Audio Output	1 (mono)
	Audio Compression	ADPCM+G.726 (8kbps)
I/O Interface	TV-OUT	2 Composite Outputs with BNC connectors
	VGA	None
	LAN	1(RJ-45) 10M/100M Ethernet interface
	USB	1, support USB OTG Technology (USB2.0)
	Serial	RS-485x3, RS-232x2
Network	Protocol	TCP/IP
Alarm	Input	9 Total (8 input and 1 output, all of them can be customized by name)
	Multi-mode	Triggered by video loss, over speed, over temperature, HDD no space and so on
Power Requirement	Ignition Switch	Device operate once ignition power on/ auto shutdown delay after ignition power off
	Power Consumption	Average 10W
	Power Adapter	8-36V DC. Typical 12V DC @ 5A, 24V @ 3A
Physical Characteristics	Height	72 mm / 2.83 in.
	Width	170 mm / 6.69 in.
	Depth	201 mm / 7.91 in.
	Weight	2.5kg 5.51 lb)
Value-added Function		
	Motion Detection	N/A
	Record Mode	Manual, continuous, schedule, event
Others	HDD	HDD Bay – 1 SATA HDD, EXT2 Format
	Storage Mode	2.5" HDD, SD (Supports SDHC)
	Time Clock	Built-in clock, perpetual calendar
	GPS Function	Optionalbuilt-in module with GPS antenna
	Wireless Communication	3G/EDGE/GPRS/CDMA wireless transmission with external option
	Data R/W mode	FIFO
	Time Synch	GPS Time Synch / NTP (Network Time Protocol) Time Synch via network connection
Environment	Operating Temperature	0-55 C
	Relative Humidity	5%-80%
	Vibration Resistance	< 2 Grms

Storage Calculation Chart (1 camera, 30 fps, with audio, best resolution)

HDD	1 GB	32 GB	60 GB	120 GB	500 GB
CIF	3 hrs	73 hrs	140 hrs	276 hrs	1100 hrs
DI	1 hr	28 hrs	54 hrs	108 hrs	450 hrs