

## HP1224ACDC

### AC/DC Dual Output Power Supply

#### Description

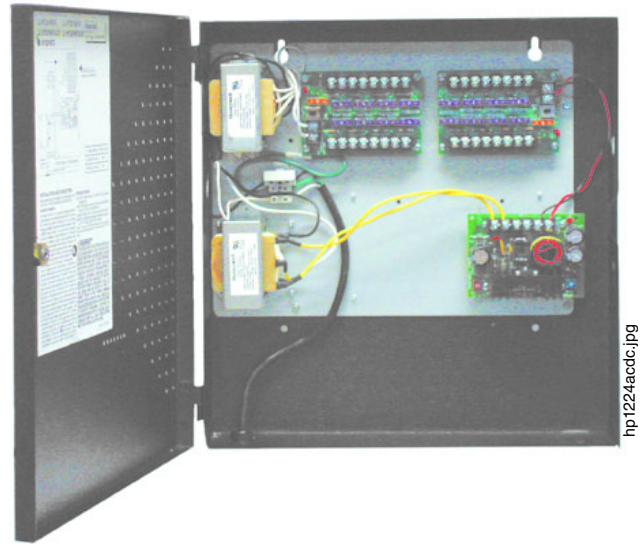
The HP1224ACDC dual output power supply is designed to provide low-voltage power for applications that require a combination of both AC and DC. It converts 115 VAC input power into 6, 12, or 24 VDC and 24 VAC power. Eight individually fused circuits are provided for both AC and DC outputs for a total of 16 outputs. This general purpose power supply has a wide range of applications for video, security and access control systems that require AC and DC power. The supply comes completely assembled in a steel cabinet for convenient installation.

#### Benefits

- An all-in-one power supply and distribution unit enclosed in a roomy cabinet.
- Transformer thermal protection limits damage from overloaded circuits.
- LED lights for quick and easy diagnosis, troubleshooting, and status indication.
- Comes fully assembled with accessories included for quick installation.
- Enclosure built for durability and product life.
- Power disconnect switch makes for easy servicing.
- Power cord included and has three conductors for ground safety convenience.
- Instantaneous switchover to standby battery (if equipped) when AC fails, maintaining power to all attached DC devices without intervention.

#### Features and Specifications

- Input: 115 VAC, 60 Hz, 2.0 A.
- Input terminal block with fuse disconnect.
- 16 individually fused outputs, each fused at 3.0 A.
- Eight filtered and electronically regulated DC outputs.
- Eight 24 VAC outputs fused at 3.0 A.
- Selectable DC output voltage: 6 VDC at 4.0 A, 12 VDC at 4.0 A, or 24 VDC at 2.5 A.
- Optional battery backup for DC outputs.
- 4.0 A supply current at 24 VAC.
- Output fuses rated at 3.0 A.
- Main AC line fuse rated at 3.0 A.
- Main distribution board fuses rated at 5 A.
- Transient protection.
- LED indicators for AC and DC power.
- Power ON/OFF switches for AC and DC power.
- Unit maintains camera synchronization.
- Enclosure dimensions:  
15.0" H x 14.5" W x 2.5" D  
(cm: 38.1 H x 36.83 W x 6.35 D).



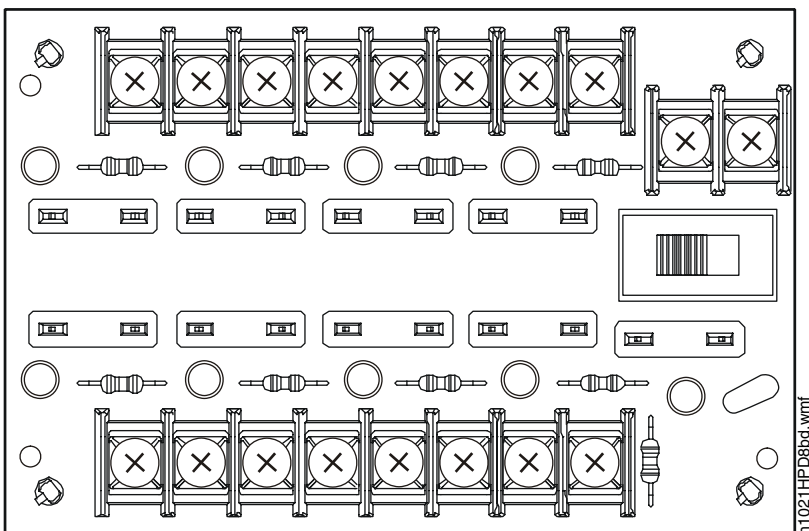
hp1224acdc.jpg

#### DC Output Voltage Selection

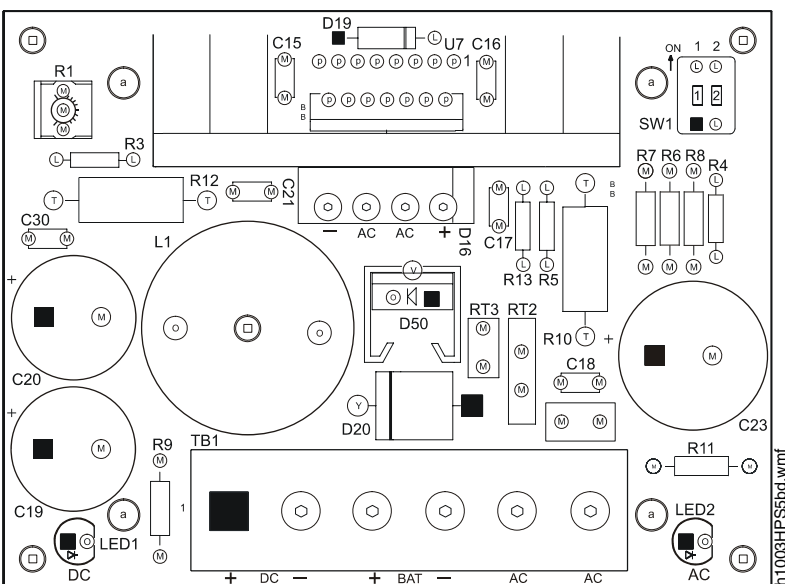
Output Voltage/Current	SW1	SW2
6 VDC	ON	OFF
12 VDC	OFF	OFF
24 VDC	OFF	ON

#### HPS5 LED Diagnostics

Red LED (DC)	Green LED (AC)	Status
ON	ON	Normal operation.
ON	OFF	Loss of AC. Operating on standby battery.
OFF	ON	No DC output. Short circuit or thermal overload present.
OFF	OFF	No DC output. Loss of AC. Battery discharged or not present.



**HPD8**



**HPS5**

This document is not intended to be used for installation purposes. We try to keep our product information up-to-date and accurate. We cannot cover all specific applications or anticipate all requirements. All specifications are subject to change without notice.  
 ©2010 by Honeywell International Inc. All rights reserved. Unauthorized use of this document is strictly prohibited.

## Automation and Control Solutions

Honeywell

12 Clintonville Road

Northford, CT 06472-1610

www.honeywellpower.com

1(877) HPP-POWR

hpp\_techserv@honeywell.com

DH-60036:B

May 2010

Made in the U.S.A.

© U.S. Registered Trademark

© 2010 Honeywell International Inc.

Page 2 of 2



**Honeywell**